

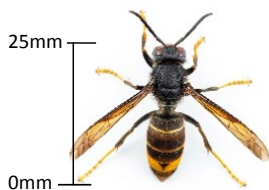
## Stay Alert

Asian hornet attack a wide range of native insect pollinators including butterflies, hoverflies and bees.

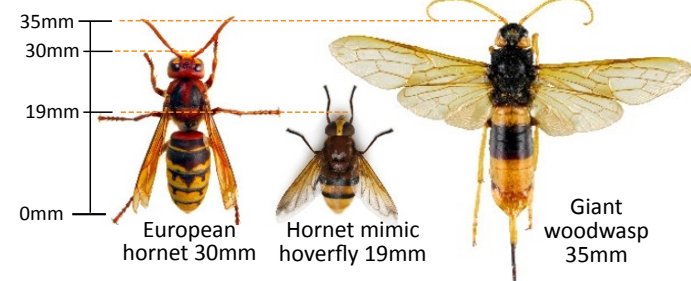
**Name:** Asian hornet (*Vespa velutina*)  
**Native to:** Asia  
**Habitat:** Nests usually high in trees and man-made structures, sometimes closer to the ground.

**Identification:**

- Queen up to 30mm long, worker up to 25mm long
- Legs yellow at the ends
- Dark brown / black abdomen with a yellow / orange band on 4th segment
- Head dark from above, orange from front
- Dark coloured antennae
- Entirely black velvety thorax
- Never active at night



### May be confused with:



## Take Action

Report any sightings immediately with a photo:

- using the **Asian Hornet Watch app** (available for iPhone and Android)
- online at: [www.nonnativespecies.org/asianhornet](http://www.nonnativespecies.org/asianhornet)
- or by email: [alertnonnative@ceh.ac.uk](mailto:alertnonnative@ceh.ac.uk)

Find out more about Asian hornet, order awareness raising materials, or report a sighting:



## Protect our Pollinators

Plants you grow in your garden can help our native pollinators thrive. We have used the RHS plants for pollinators list to help us select the plants featured on this exhibit.

### Plant List:

|   |                                       |
|---|---------------------------------------|
| <i>Achillea</i> 'Moonshine'                 | <i>Knautia arvensis</i>               |
| <i>Agastache</i> 'Blackadder'               | <i>Lavandula angustifolia</i>         |
| <i>Agastache rugosa</i> 'Beelicious Purple' | <i>Silene coronaria</i> 'Alba'        |
| <i>Ajuga reptans</i> 'Black Scallop'        | <i>Nepeta racemosa</i> 'Walker's Low' |
| <i>Anthriscus sylvestris</i> 'Ravenswing'   | <i>Origanum</i> 'Rosenkuppel'         |
| <i>Campanula persicifolia</i>               | <i>Pinus sylvestris</i>               |
| <i>Cephalaria gigantea</i>                  | <i>Rosa</i> (F)                       |
| <i>Cephalaria leucantha</i>                 | <i>Salvia nemorosa</i> 'Caradonna'    |
| <i>Chamaemelum nobile</i>                   | <i>Salvia rosmarinus</i>              |
| <i>Erysimum</i> 'Bowles's Mauve'            | <i>Salvia</i> 'Blue Spire'            |
| <i>Foeniculum vulgare</i> 'Purpureum'       | <i>Sanguisorba minor</i>              |
| <i>Geranium</i> sp.                         | <i>Scabiosa</i> sp.                   |
| <i>Geum</i> sp.                             | <i>Stachys byzantina</i>              |
| <i>Hedera helix</i>                         | <i>Stipa tenuissima</i>               |
| <i>Iris</i> sp.                             | <i>Thymus vulgaris</i>                |
| <i>Knautia macedonica</i>                   |                                       |

Remember to dispose of unwanted plants and plant waste responsibly to prevent them spreading beyond your garden and becoming invasive. Most plant material can be composted at home or put in the garden waste bin. Find out more at [www.nonnativespecies.org/beplantwise](http://www.nonnativespecies.org/beplantwise).



RHS Chelsea Flower Show  
21 to 25 May 2024

Discovery Zone  
GPA003  
Sponsored  
by Defra



# Exhibit highlights

Sightings should be reported immediately with a photo:

- with the recording app: **Asian Hornet Watch**
- online at: [www.nonnativespecies.org/asianhornet](http://www.nonnativespecies.org/asianhornet)
- by email: [alertnonnative@ceh.ac.uk](mailto:alertnonnative@ceh.ac.uk)

This exhibit highlights the threat of the invasive non-native species Asian hornet to UK pollinators and steps you can take to report a suspected sighting.

Asian hornet spread across Europe

Examples of Asian hornet pollinator prey

Discover Asian hornets feeding and flying & look inside a hornet's nest through the peepholes (peepholes are at both standing and wheelchair height)

Approaches APHA are taking to detect Asian hornets and their nests

Follow the path of Asian hornets from the beehive to their nest high in the tree

Learn more about:

- How to report sightings
- Similar species Asian hornet could be confused with
- Ways it can be spread accidentally



Wheelchair access to exhibit

Life cycle of Asian hornet and part of a real nest

A selection of RHS approved Plants for Pollinators that you can grow to encourage pollinating insects to your garden

Model of Asian hornet feeding on a honey bee prey (magnification X6)

Asian hornet prey on pollinators including honey bees. A single hornet can consume up to 50 bees daily

The Animal & Plant Health Agency (APHA)'s mission is to safeguard animal and plant health for the benefit of people, the environment, and the economy.

APHA's National Bee Unit is working to protect honey bees from threats including Asian hornet, by locating and destroying Asian hornet nests to prevent this species from becoming established in Great Britain.

Thanks to suppliers/contributors:

- Essential Productions
- Woodland Heritage
- Provender Nurseries
- Barcham Trees
- Chris Isaacs
- Quentin Rome / MNHN
- David Riley Model Making
- Fera Science Ltd.
- Jon Bentley Blue Yonder