

Alert ! Report sightings of this species to alertnonnative@ceh.ac.uk

Raccoon Dog

Scientific name: *Nyctereutes procyonoides*

Also known as: Tanuki

Native to: East Asia

Habitat: Favours woodland with abundant undergrowth, often near water

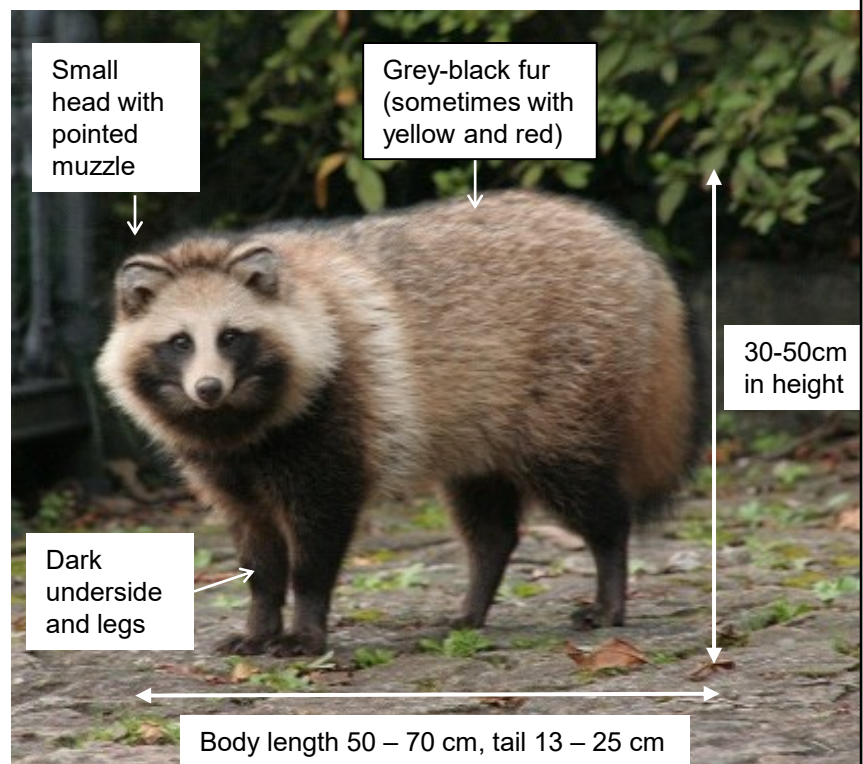
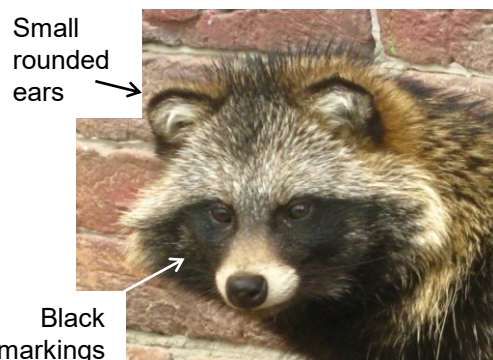
A fox sized animal with short legs and grey-brown-black fur. Head is small, with characteristic black marking on face similar to racoon, pointed muzzle and small rounded ears. Tail is short with no rings.

Not established in GB, though escapes from captivity may occur. Poses a serious threat to biodiversity as a predator and competitor. Also an important vector of zoonotic disease such as rabies.

It is illegal to buy, sell, keep or release raccoon dogs in GB. For details refer to: <https://www.gov.uk/guidance/invasive-non-native-alien-animal-species-rules-in-england-and-wales>



Key ID Features

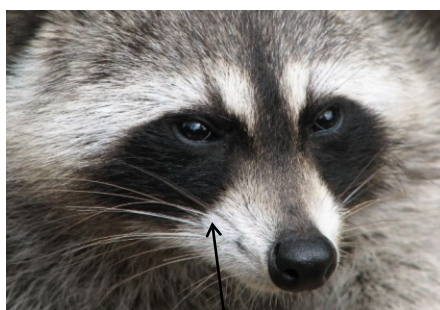


Similar Species

There are no wild native animals in Great Britain with which racoon dog is likely to be confused. It could be confused with racoons which are infrequently kept in captivity in GB and may escape. It could also be confused with dark furred varieties of the native red fox, which may escape captivity.

Raccoon Non-native (*Procyon lotor*)

Raccoon dogs may look superficially like racoons. However, the racoon's arched back, ringed tail and finger like toes help to quickly distinguish them.



Length from nose to end of tail length 60 - 96 cm

Red Fox (dark furred) Native (*Vulpes vulpes*)



White racoon dogs



All white (Leucistic) raccoon dogs are sometimes kept and could be seen in the wild

Further information:

- <https://www.cabi.org/isc/datasheet/72656>
- <http://www.nonnativespecies.org/factsheet/factsheet.cfm?speciesId=2377>
- <https://www.rspca.org.uk/adviceandwelfare/pets/other/raccoondogs>