

# Ruby Bryozoan

*Bugula neritina*

D

**Pathway** • Hull fouling • Aquaculture - attaching to oyster shells • Ballast water

## Impacts



### Biodiversity

Has the potential to affect native biodiversity due to the large size of colonies.



### Human Health

None known.



### Economy

Encrusts artificial structures such as boats and harbours as well as commercial shellfish which can have negative economic impacts.

## Key ID Features



## Description

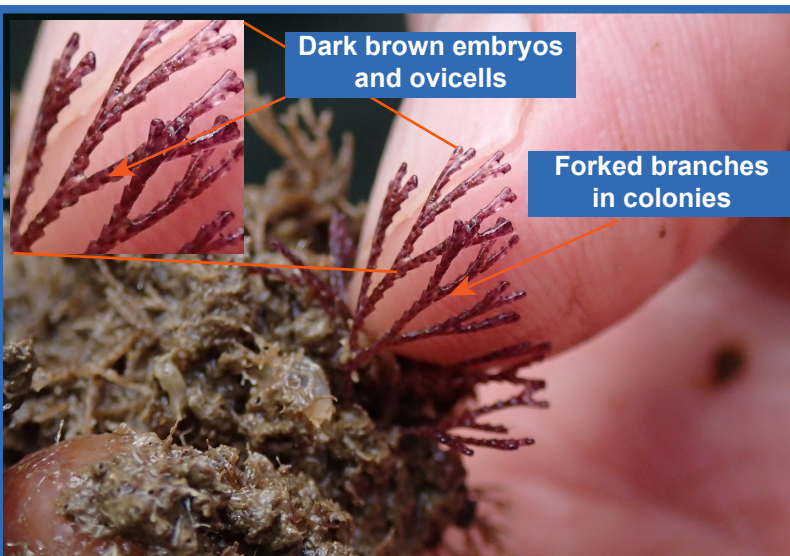
Forms upright, bushy with forked branched colonies of flexible red seaweed like growth, attached to the substrate by a holdfast. Individual zooids are smaller than 1 mm in diameter and form rows along the branches. Embryos are dark brown and in white globular pouches (ovicells) which have the appearance of white beads.

### Size

Colonies up to 10 cm high.

### Colour

Ranges from red-brown or golden-brown to purplish brown.



\*Note: Images not to scale



## Distribution

**Native range:** Native range is unknown.

**Non-native range:** global, except sub-Arctic and sub Antarctic seas.



# Ruby Bryozoan

*Bugula neritina*

**D**

## Habitat and Ecology

**Habitat:** In protected harbours and marinas and intertidal zone to depths of 5 m. Attaches to hard substrates such as rocks, and to artificial substrata such as boat hulls and ropes.

**Environmental preference:** Can tolerate a range of salinities including brackish water. Does not grow well in salinities below 18 ppt. Tolerates high levels of pollution and toxicants.

**Diet:** Suspension feeder of plankton and organic particles.

**Reproduction:** Hermaphrodite releases sperm and eggs into the water. Larvae settle quickly and do not feed. The larvae then bud asexually to form a colony.

## Confusion with similar species

Very similar in appearance to closely related species in its genus. Differs from other species in this genus in that it possesses no non-feeding zooids (avicularia) and no spines. The globular ovicells are also a conspicuous and characterising feature.

### Images

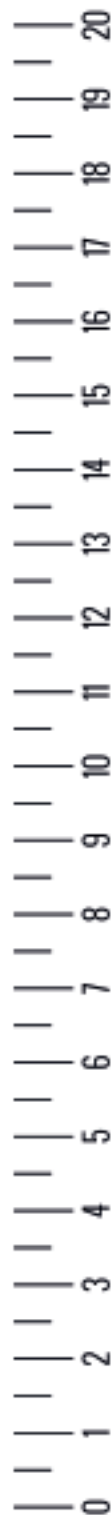
Front: All images © Francis Bunker

If you think you have seen this species, please contact the person below who will confirm its identity.

Please also refer to the mitigation strategies guidance document, provided as part of the Marine Biosecurity Toolkit.

## Further Information

- <http://www.nonnativespecies.org/factsheet/factsheet.cfm?speciesId=585>
- <http://www.iucngisd.org/gisd/species.php?sc=1080>
- <https://www.cabi.org/isc/datasheet/109209>



cm