

A few examples of the invasive plants and animals that could become a serious problem in our marine environment:

### CARPET SEA SQUIRT

While each individual is tiny (1 mm long), carpet sea squirt grows in colonies which can cover several square kilometres. These colonies crowd out native marine species and are a nuisance for anglers and boat owners as they clog up fishing equipment, cover the underside of boats, and smother reefs.



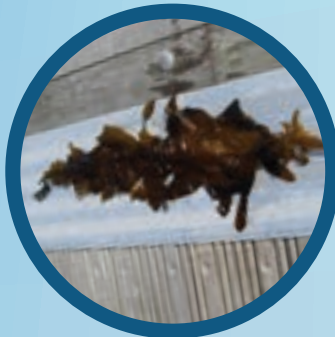
### SLIPPER LIMPET

Slipper limpets form chains and stacks which can contain up to 15 individuals. They can starve and smother native shellfish and be a serious pest of oyster and mussel beds, impacting on fisheries.



### WAKAME

This large fast-growing seaweed forms drifting mats which can clog marinas and recreational areas, covers the underside of boats and harbour structures, and outcompetes native marine species.



# STOP THE SPREAD

Find out more about invasive plants and animals and how you can help to stop the spread at:

[nonnativespecies.org/checkcleandry](https://nonnativespecies.org/checkcleandry)

@CheckCleanDryGB

Scan QR code on your mobile



Funded by the Aquatic Biosecurity Partnership

Photos from Natural Resources Wales and GB NNSS.

Invasive plants and animals harm the marine environment and interfere with fishing  
Don't spread them on your kit

CHECK

CLEAN

DRY



Invasive plants and animals from all over the world have been introduced accidentally to British waters. Over twenty marine species have already been found, and the number of new arrivals is increasing rapidly.

They cause serious environmental problems that can be irreversible – outcompeting native wildlife, damaging ecosystems, and spreading disease. They can also interfere with fishing by clogging equipment, fouling hard surfaces including hulls, and damaging boats.

They can be small and hard to spot so are easily spread on damp boats, equipment and clothing. **Protect the marine environment and fishing you enjoy by keeping your kit free of invasive plants and animals.**

# STOP THE SPREAD

It's even more important to **Check Clean Dry** if you're taking your kit abroad to make sure you don't bring any plants or animals back with you.

**Make sure everything is clean and has been dried thoroughly before you use it again at home.**

## Remember to check these places

### CHECK

**Check** your gear after leaving the water for fouling or plant material. Remove anything you find and put it in the bin. If you use a boat, reapply anti-fouling annually.

### CLEAN

**Clean** everything thoroughly with freshwater as soon as you can, paying attention to nets, waders, ropes, and areas that are damp and hard to access.

### DRY

**Dry** - drain water from boats and trailers before leaving the site. Dry everything for as long as you can before using elsewhere.



You can request free Check Clean Dry awareness-raising materials for your club from [nonnativespecies.org/checkcleandry](http://nonnativespecies.org/checkcleandry)