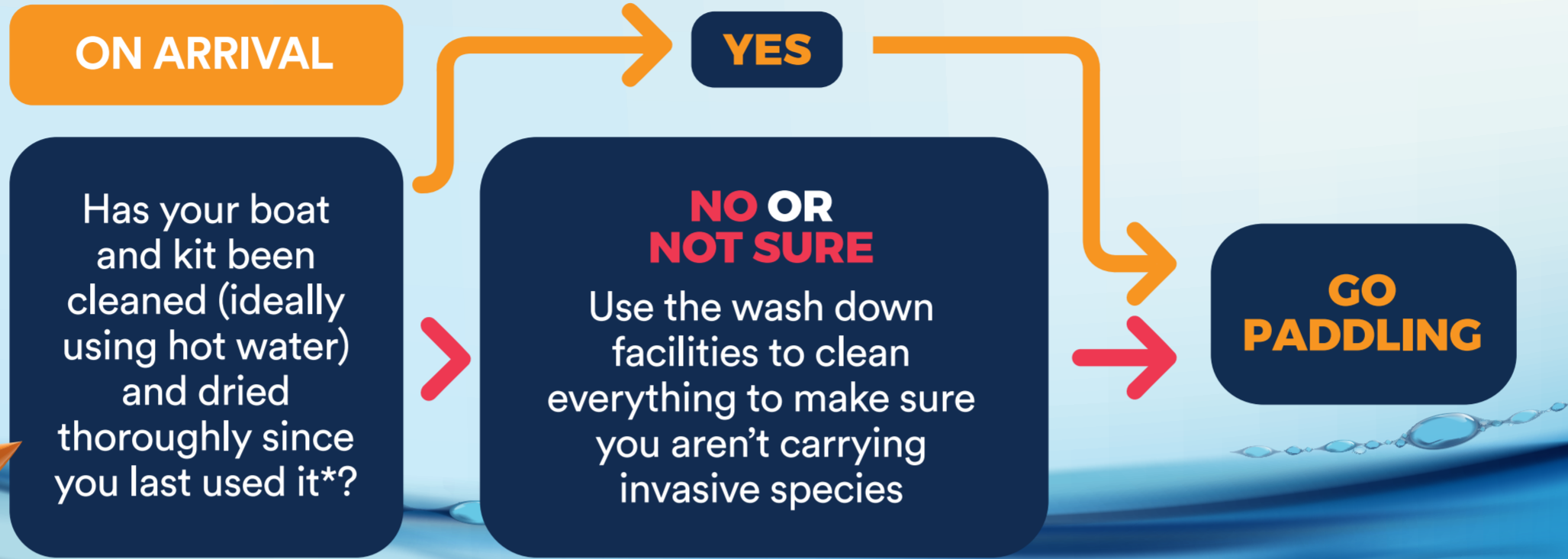
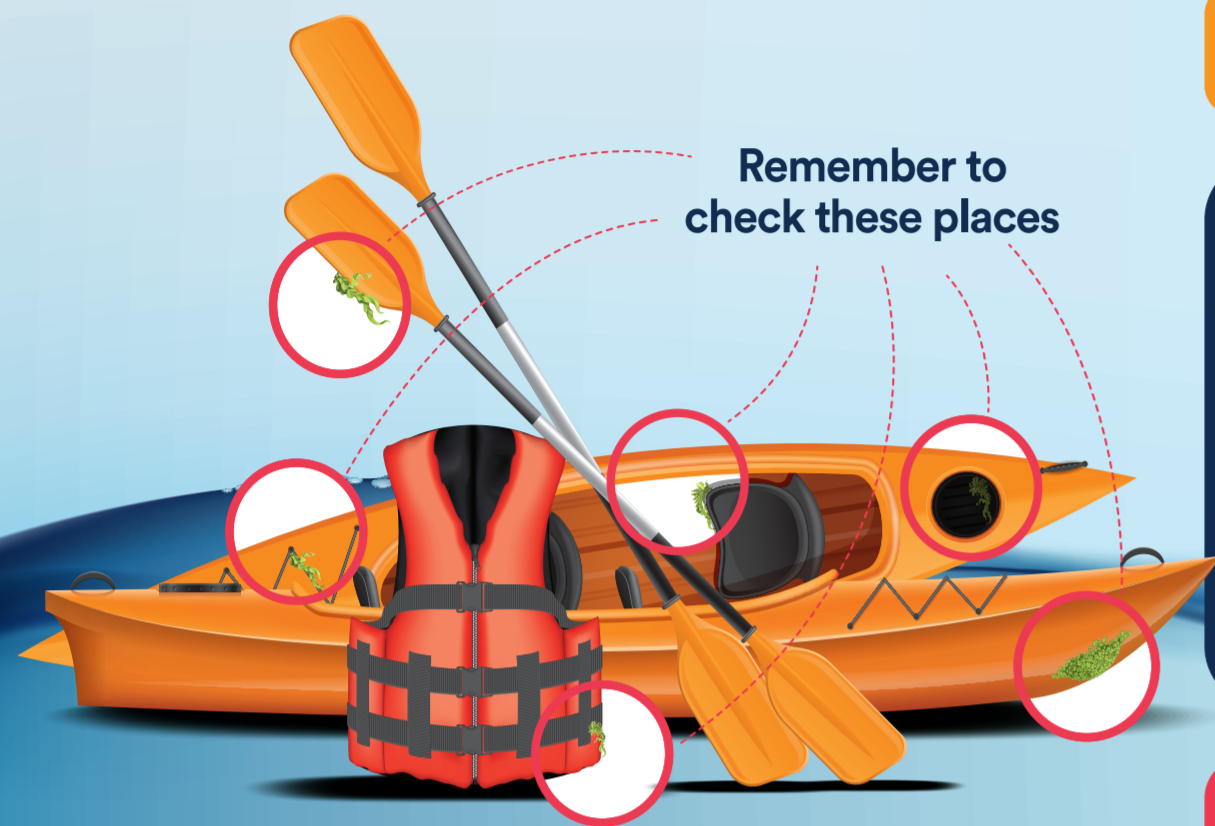


WASHDOWN STATION



AFTER YOU LEAVE THE WATER

PROTECT YOUR WATERS

Invasive non-native species are a threat to our waters and the activities you enjoy. You could be unknowingly carrying them on your damp boat, equipment and clothing.

These facilities have been provided to help you keep your kit free of invasive species. Thank you for helping to protect our waters.

CHECK

ON SITE
Check your kit for plants, mud and aquatic animals

CLEAN

ON SITE
Use the washdown facilities to remove any smaller plant fragments, animals and parasites from your kit

AT HOME
If you don't use the facilities, remember to clean your equipment, wellies and waders, ideally in water from the hot tap (take care) for at least 15 minutes

DRY

AT HOME
Dry everything thoroughly before using it elsewhere, invasive species can survive over two weeks on damp equipment

*dried thoroughly means it has been dried in sunlight (ideally) to kill disease, or hung to dry for at least 48 hours.

WHAT ARE INVASIVE NON-NATIVE SPECIES?

Non-native species are plants and animals that are not normally found in the UK waters and have been accidentally or intentionally introduced by people. Some of these are invasive and pose a threat to our native species, habitats and hobbies.

Below are a few examples of their impacts:



Freshwater plants like floating pennywort block waterways preventing paddling

Crayfish burrow into riverbanks causing severe bank erosion which can lead to flooding



Aggressive invasive shrimps attack and kill native species including young fish and fish eggs

DID YOU KNOW

Invasive non-native species can survive out of water on damp clothing and equipment for over 14 days?