

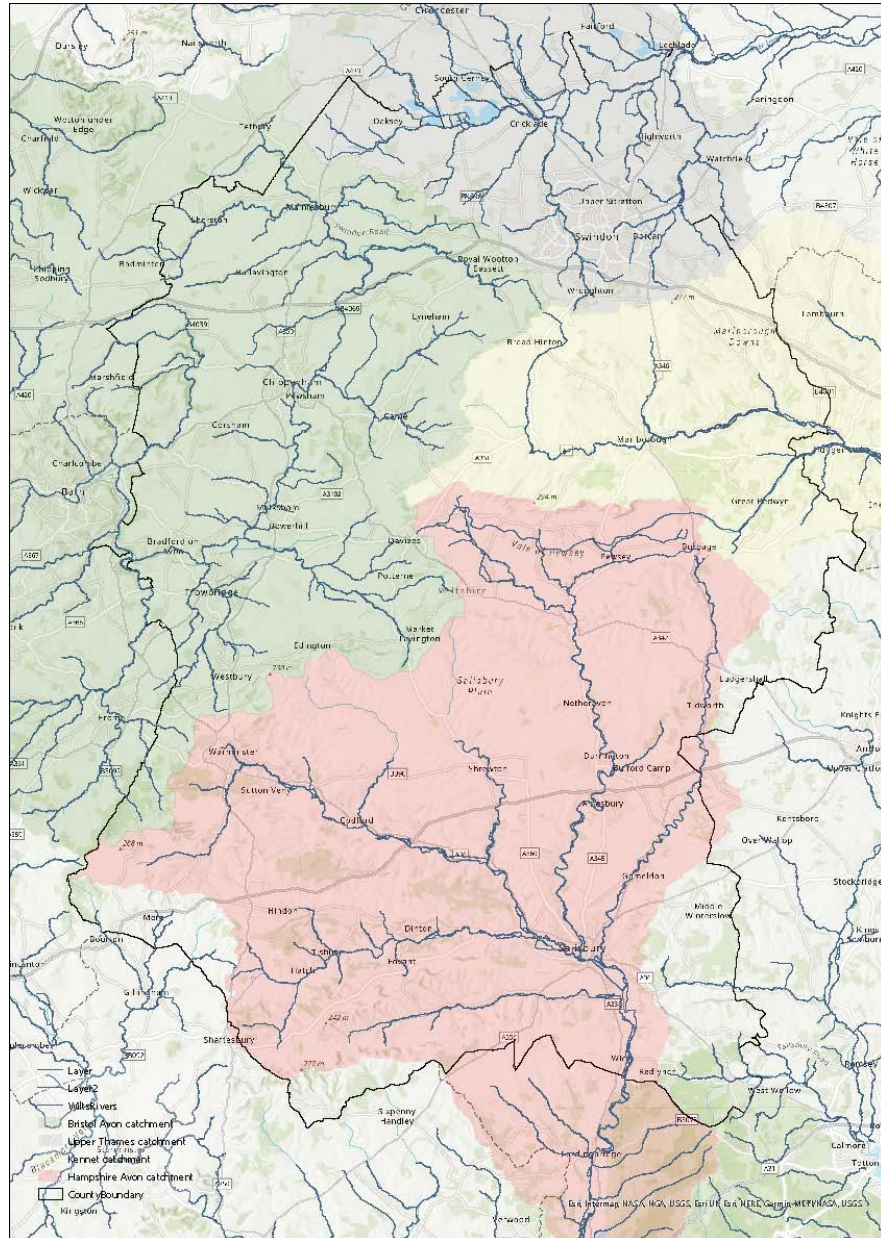
## Wiltshire INNS Project Update



# Wiltshire Wildlife Trust

## WWT Water Team

Work across all catchments in Wiltshire on various water projects.



# Wiltshire Wildlife Trust

## 2023

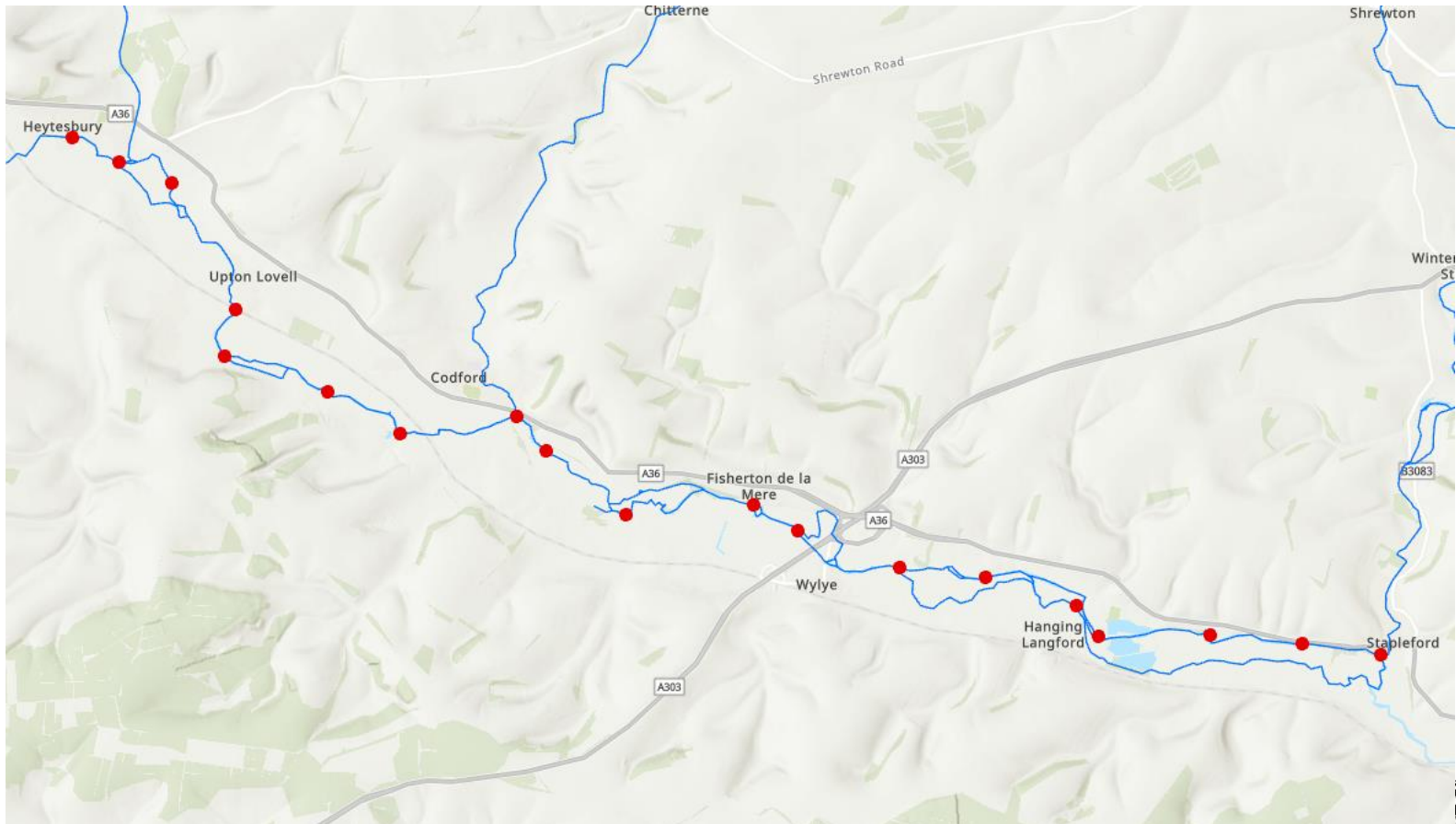
- American mink throughout Hampshire Avon and Wylfe valley catchment
- Himalayan balsam across the county.



# Wiltshire Wildlife Trust

## Mink

- Evident that there is a widespread population on the Wylde impacting water voles among other species.
- Coordinated survey effort to inform future control.



# Wiltshire Wildlife Trust

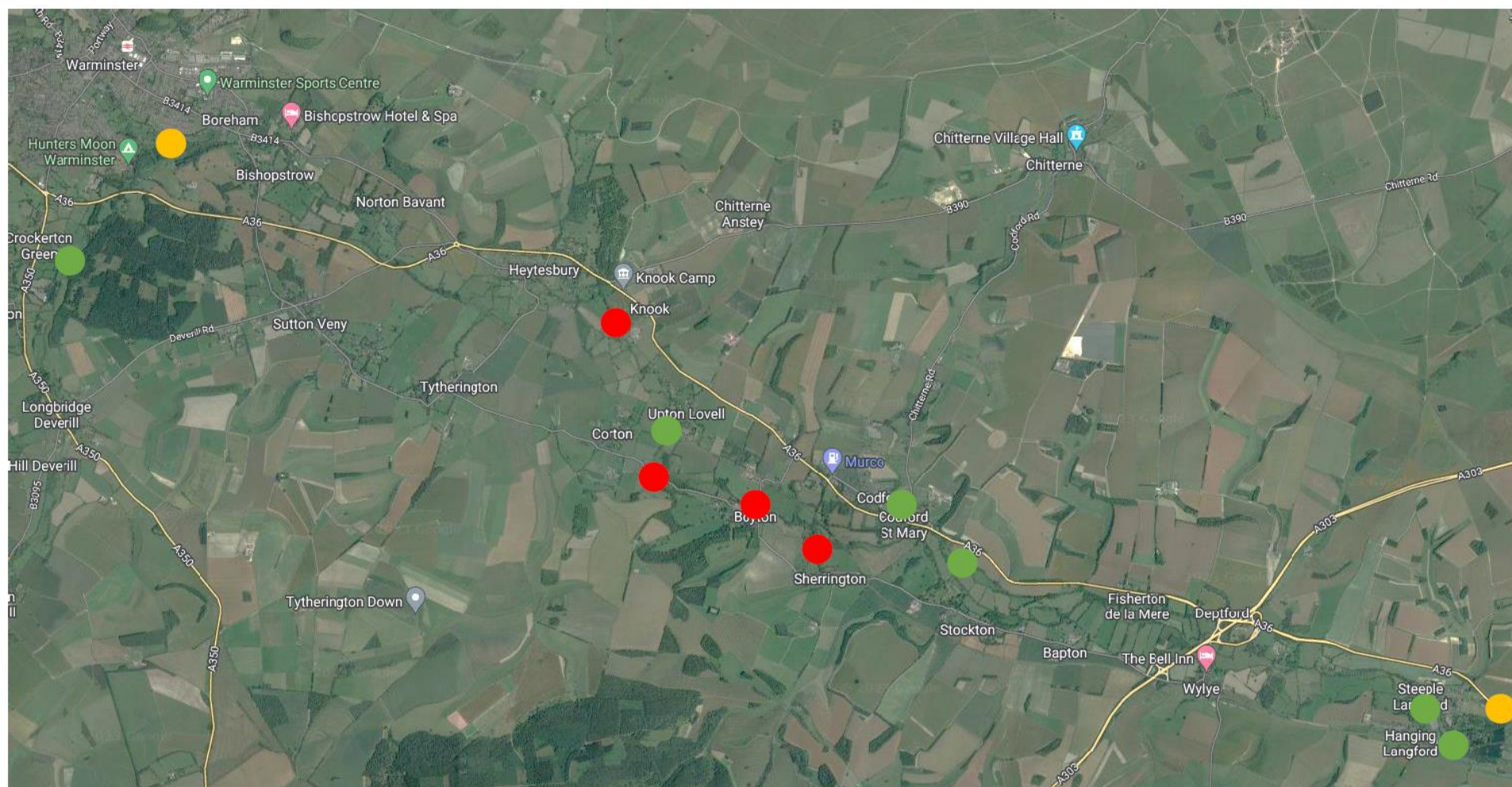
## Mink

In 2022

- 12 rafts the along Wylde
- 1km intervals
- Volunteer led monitoring



# Wiltshire Wildlife Trust

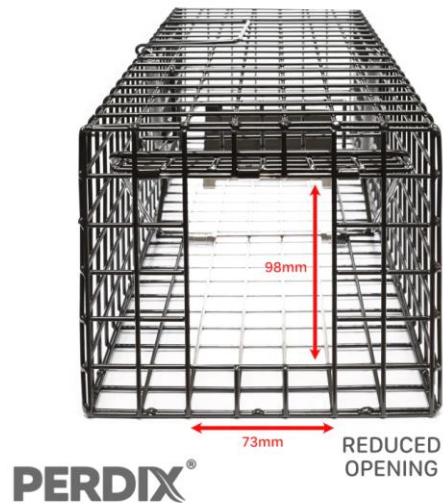


Tracking raft locations; the different coloured points indicate mink presence: red – mink evidence recorded, green – no mink evidence recorded, yellow – no data collected

# Wiltshire Wildlife Trust

In 2023

- Water Team hosted a Keepers and Farmers Breakfast to engage in mink control and hand out traps and show correct use.
- Very successful event. – 15 given out at event and 7 on order.
- Recommendations from Waterlife Recovery Trust.
- Mink MApp



# Wiltshire Wildlife Trust

## Himalayan balsam

- **Hampshire Avon**
  - Continuing repeated survey and removal efforts for the last 6 years.
  - Focus on the Nadder, Wylde and Ebbel.
- **Bristol Avon**
  - By Brook – 14 years and counting of balsam work, continue survey efforts and removal of individual plants.
  - Chippenham.
  - Melksham.
  - Trowbridge
  - Staverton.
  - Working with Water Guardians to increase survey effort.
- **Upper Thames**
  - Swindon, with a particular focus on the River Ray.



For information: NASA, NOAA, USGS, Esri UK, Esri, HERE, Garmin, Mapbox, USGS



# Wiltshire Wildlife Trust

## Himalayan balsam

- **Hampshire Avon**
  - Continuing repeated survey and removal efforts for the last 4 years.
  - Focus on the Nadder, Wylde and Ebbel.
- **Bristol Avon**
  - By Brook – 14 years and counting of balsam work, continue survey efforts and removal of individual plants.
  - Chippenham.
  - Melksham.
  - Trowbridge
  - Staverton.
  - Working with Water Guardians to increase survey effort.
- **Upper Thames**
  - Swindon, with a particular focus on the River Ray.



Data from maps: NAGP, MGA, JCES, Dor UK, Dor HRE, Geonix, MGS, WSA, 1995

# Wiltshire Wildlife Trust

## Himalayan balsam

- **Hampshire Avon**
  - Continuing repeated survey and removal efforts for the last 4 years.
  - Focus on the Nadder, Wylde and Ebbel.
- **Bristol Avon**
  - By Brook – 14 years and counting of balsam work, continue survey efforts and removal of individual plants.
  - Chippenham.
  - Melksham.
  - Trowbridge
  - Staverton.
  - Working with Water Guardians to increase survey effort.
- **Upper Thames**
  - Swindon, with a particular focus on the River Ray.



Map data: OSM, NGA, USGS, Esri, DeLorme, NAVTEQ, Swatch, IGN, etc.

# Wiltshire Wildlife Trust

## Volunteers

We would not be able to achieve nearly as much without the help of our amazing volunteers.



# Wiltshire Wildlife Trust

## Wish List

Funding for remote monitors for all mink traps and start to use mink scent to lure them in.

Crayfish – funding to map management of signal crayfish traps, with supervised education of the species

Simplified reporting techniques with a central INNS databas  
Particularly help with planning our Himalayan Balsam removal projects.

University research to find the best most cost-effective techniques to manage and eradicate

Increased education of INNS across general population

Support with better enforcement

# Wiltshire Wildlife Trust

Thank you for listening  
Oonagh French  
Water Team - Wiltshire Wildlife Trust  
[Water@wiltshirewildlife.org](mailto:Water@wiltshirewildlife.org)

