

**NEW FOREST NON-NATIVE PLANTS
PROJECT**

**REPORT TO STEERING GROUP MEETING
ON
17 JANUARY 2017**

**Report covering the period
1 September 2016 – 31 December 2016**

**Catherine Chatters
New Forest Non-Native Plants Officer
3 January 2017**

Publicity

Press releases

The following press releases were issued between 1 September and 31 December 2016:-

- ‘Gardeners learn to ‘Be Plant Wise’ at Exbury Gardens’ issued by HIWWT in October 2016
- ‘Celebrating success in the Balsam Battle’ issued by HIWWT on 21 October 2016

Publications and websites

- The New Forest Non-Native Plants Project’s work to control Pitcher Plants *Sarracenia purpurea* is acknowledged in ‘Carnivorous Plants of Britain and Ireland’ by Tim Bailey and Stewart McPherson which was published in 2016. See page vi (acknowledgements), page 156 (section relating to *Sarracenia purpurea*) and page 184 (references section which refers to the report by Neil Sanderson commissioned by the NFNNPP).
- On 29 September 2016 The New Forest Post included an article by Sean Marsh (Trainee Estates Officer with the Forestry Commission) titled ‘What’s happening over the hedge?’ which featured the New Forest Non-Native Plants Project and urged people not to dump garden waste.
- On 21 October 2016 the Lymington Times included an article titled ‘Top gardener talks on non-native plant threat’ based on the press release issued by HIWWT titled ‘Gardeners learn to ‘Be Plant Wise’ at Exbury Gardens’.
- The Herald No 329 (27 October – 19 November 2016) included an article on page 52 titled ‘Planting Wisely’ based on the press release issued by HIWWT titled ‘Gardeners learn to ‘Be Plant Wise’ at Exbury Gardens’.
- On 31 October 2016 the Bournemouth Echo website included an article titled ‘Hundreds of hours spent tackling Himalayan balsam weed’ based on the press release issued on 21 October. The article was accompanied by a photograph of staff from the Royal Yachting Association pulling balsam on the Cadnam River on 14 July 2016. See http://www.bournemouthecho.co.uk/news/districts/newforest/14831937.Hundreds_of_hours_spent_tackling_Himalayan_balsam_weed/
- On 3 November 2016 The New Forest Post included an article on pages 3 and 4 titled ‘Celebratory party is held to thank balsam bashers’ which was based on the press release issued on 21 October 2016. It was accompanied by a photo of Gina Badami and her son Ossian who pulled balsam along the Avon Water in Summer 2016.
- The fourth volunteer newsletter for the ‘Our Past, Our Future’ project featured the work undertaken by volunteers to pull Himalayan balsam with NFNNPP during Summer 2016.
- The Herald No 330 (17 November – 8 December 2016) included an article on page 64 titled ‘Celebrating the Balsam Battle’.
- The ‘Our Past, Our Future’ Newsletter (November 2016) mentioned the work undertaken by NFNNPP volunteers to control Himalayan balsam.
- The Local Action Group (LAG) eBulletin issue 13 (distributed in December 2016) featured Catherine Chatters’ Radio Solent interview on 25 November 2016.
- Issue No 1 (Autumn/Winter 2016) of ‘Forest Matters: Review of the New Forest Association’ included two articles about the ‘Our Past, Our Future’ project, both of which referred to the NFNNPP’s work to control invasive non-native plants.

Radio interview

On 25 November 2016 Catherine Chatters was interviewed live on Radio Solent by presenter Sasha Twining, during an hour's programme at mid-day that included a live 'phone-in and questions about invasive non-native plants.



Liaison with landowners and managers

The following landowners/managers were met between 1 September – 31 December 2016:-

- Jane Horton (Beaulieu River) on 16 September 2016
- Dr Neil Strong, Network Rail (Lymington River and Passford Water) on 22 November 2016
- Chairman, Secretary and members of Brokenhurst Manor Fly Fishing Club (Lymington River) on 24 November 2016

On 23 September 2016 Catherine Chatters received an email from Linda Charles of the Hythe and Dibden Woodland and Waterside Conservation Group. Catherine had led a Himalayan balsam pull with members of the Conservation Group in Tate's Copse at Hythe on 14 June 2012. Linda said:-

“Good morning Catherine, I have been meaning to email you and as our AGM is coming up it has prompted me to get on and do it. At least I can report when we meet for the AGM that I have let you know that we had 10 Balsam plants growing on the site you visited in 2012. You advised us how to deal with the Balsam at our session in 2012 and there has not been any since until this year. The 10 plants which appeared this year have been pulled up and we will continue to monitor the site. The site was near the small stream next to the sports field, known locally as the Navy Field, off Frost Lane in Hythe.

Keep up your good works with the Non Native Project you lead.

Kind regards, Linda”

email from Linda Charles on 23 September 2016

On 14 September 2016 Simon Collyer, landowner along the Passford Water, contacted Catherine Chatters to obtain contact details for relevant staff at Network Rail as he remains concerned about the lack of effective action taken to control Himalayan balsam growing adjacent to the railway line. Catherine gave him contact details of local and regional staff in Network Rail who have responsibility for the control of invasive non-native plants.



Simon Collyer who owns land adjacent to the railway line in the vicinity of the Passford Water sent NFNNPP photographs in September 2016 to show the Himalayan balsam growing on land for which Network Rail is responsible

Steering Group meeting

The Steering Group meeting was held on 20 September 2016.

Liaison with Wildlife and Countryside Link Invasive Non-Native Species Group

Catherine has been invited to attend the Link Invasive Non-Native Species Group meeting in London on 3 January 2017 when Olaf Booy of the GB Non-Native Species Secretariat will give a presentation on research into pathway prioritisation.

Liaison with other Projects and Organisations

Medway Valley Countryside Partnership

Andrea Griffiths (Senior Partnership Officer – Past Plants, Future Flora and Invasive Non-Native Plant Projects) of the Medway Valley Countryside Partnership sought advice (via the GB INNS discussion forum digest) about control of American skunk cabbage by hand-digging. Catherine Chatters responded on 7 September and provided information about hand-digging by NFNNPP on 1 June 2016. Catherine put Andrea in touch with Graham Dennis of HIWWT who dug up approximately 200 skunk cabbage plants with a volunteer in North Hampshire at Benyon's Inclosure on 10 May 2016.

Cornwall College Newquay

On 24 October 2016 Catherine was contacted by Nicola Morris, Project Coordinator at Cornwall College Newquay, who requested a copy of the report Chatters C (2010) New Forest Non-Native Plants Project Report of measures undertaken to control American skunk cabbage during 2010. Nicola said that the report had been referenced in a number of other reports and she considered it would be useful for students at the College. Catherine sent her a copy of the report on 24 October.

Control work undertaken by contractors

Invoices were received by HIWWT / NFNPA between 1 September and 31 December 2016 for the following work undertaken by contractors in 2016:-

Pennington Common (HLS scheme)	Bamboo and Himalayan knotweed (Purchase Order 14473)
Crown Land (FC funding)	Buddleia at Markway (Purchase Order 14472)
	<i>Iris laevigata</i> in Wootton Coppice Inclosure (Purchase Order 14466)
	Japanese knotweed at Broughton Road, Lyndhurst Area 1 (Purchase Order 14465)
	Japanese knotweed at Broughton Road, Lyndhurst Area 2 (Purchase Order 14464)
	Japanese knotweed on Crown Land near The Pig Hotel (Purchase Order 14469)
	Japanese knotweed at New Park (Purchase Order 14467)
	Japanese knotweed in Pondhead Inclosure (Purchase Order 14470)
	Japanese knotweed along ditch, Woodlands Road (Purchase Order 14471)
	Japanese knotweed in vicinity of Lyndhurst Fire Station (Purchase Order 15010)
Crown Land on Open Forest (NF HLS scheme)	Bog arum at Ipley (Purchase Order 14455)
	Cotoneaster at Beaulieu Heath (Purchase Order 14452)
	Cotoneaster at East Boldre (Purchase Order 14454)
	<i>Iris laevigata</i> in ditches at Lyndhurst (Purchase Order 14460)
	<i>Iris laevigata</i> at Latchmoor Pond (Purchase Order 14461)
	American skunk cabbage & Montbretia, Mill Lawn Brook (Purchase Order 14458)
	American skunk cabbage, Montbretia and Japanese knotweed at Minstead (Purchase Order 14457)
	Japanese knotweed at Emery Down (Purchase Order 14463)
	Japanese knotweed at Vereley Hill (Purchase Order 14462)
	Parrot's feather at Hinchleslea, Castle Hill (Burley) and East End (Purchase Order 14453)
	Golden Club <i>Orontium aquaticum</i> (Purchase Order 14622)
	Montbretia along Woodlands Road (Purchase Order 14636)

Work funded by OPOF HLF Landscape Partnership Project	Second treatment in 2016 of giant hogweed along the Avon Water (Purchase Orders issued by NFNPA)
	Japanese knotweed along the Cadnam River (Purchase Order issued by NFNPA)

Work funded by HIWWT	American skunk cabbage in Lymington Reedbeds nature reserve (Purchase Order 14544)
	Japanese knotweed on West side of Lymington Reedbeds (Purchase Order 14688)
	Japanese knotweed on East side of Lymington Reedbeds (Purchase Order 14689)

Volunteer activity to control invasive non-native plants between 1 September and 31 December 2016

Control of Himalayan balsam

Between 1 September and 31 December 2016 Jo Gore led nine volunteer work parties to pull Himalayan balsam. Details are given in Appendix 1 to this report.

Control of Pitcher Plants

On 7 November 2016 Catherine Chatters led a volunteer work party to remove pitcher plants *Sarracenia purpurea* from Holmsley Bog. A total of 43 plants (including seedlings, juvenile plants and one mature plant) were recorded and dug up by hand.



Volunteers removing pitcher plants from Holmsley Bog on 7 November 2016



Volunteers at end of task at Holmsley Bog on 7 November 2016 with the partly-filled sack containing the dug-up pitcher plants

After the task at Holmsley Bog, volunteers helped Catherine check the site near Wootton Bridge (SZ 25253 99687) where pitcher plants had been removed in 2014. Fortunately no plants were found here on 7 November 2016.

Monitoring the effectiveness of control work

Monitoring control of Cotoneaster

On 13 October 2016 Catherine Chatters visited the former airfields at East Boldre and Beaulieu Heath to assess the effectiveness of the herbicide treatment undertaken to control Cotoneaster in 2016. Some small patches and whole plants have missed treatment but this was inevitable considering a) difficulty in recognising plants during the summer before the berries are formed and b) the very large number of plants that were growing at Beaulieu Heath. Catherine returned with Matthew Cheetham (Southern Counties Forestry) on 20 October to discuss the need for follow-up treatment in 2017.



Cotoneaster plants treated with herbicide in 2016 at Beaulieu Heath (left) and East Boldre (right) photographed on 13 October 2016

Volunteer activity - monitoring

On 3 November 2016 Richard Hughes and Megan Woolley helped Catherine Chatters to monitor the effectiveness of the herbicide treatment undertaken during summer 2016 to control the Cotoneaster plants at the former WWI airfield at East Boldre and the former WWII airfield at Beaulieu Heath. Cotoneaster plants which require treatment in 2017 were recorded using a hand-held GPS device. Richard also helped the Project Officer on 17 November and on 24 November when Megan was able to help again.

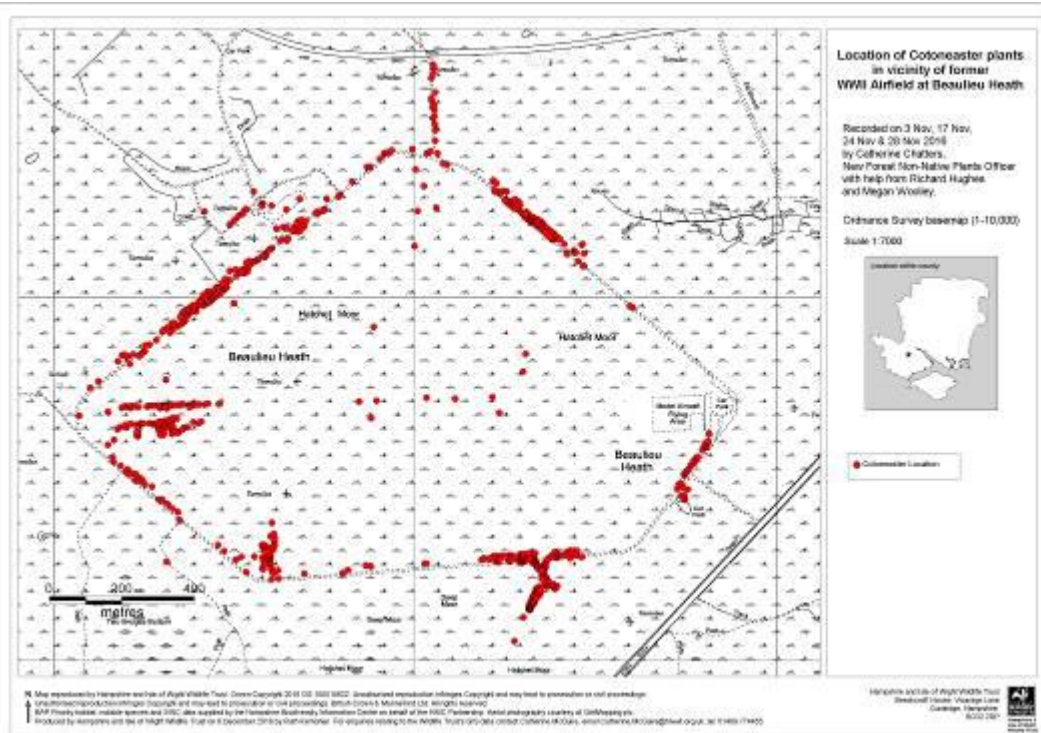
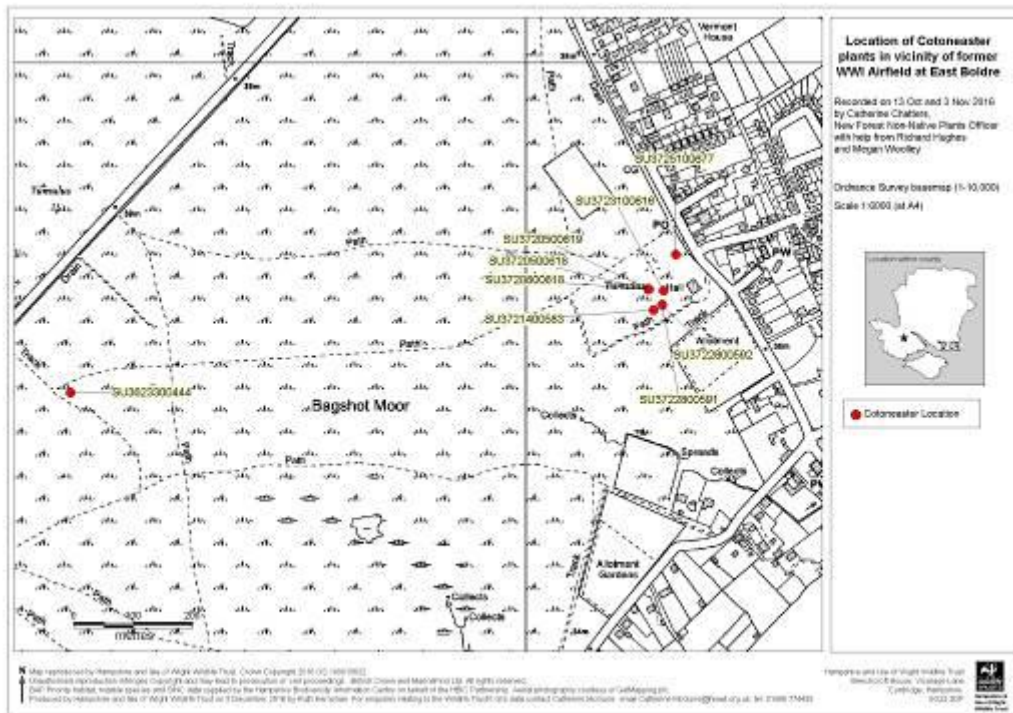


Volunteers Richard Hughes and Megan Woolley recording Cotoneaster plants at Beaulieu Heath on 3 November 2016



Volunteers Richard Hughes and Megan Woolley recording Cotoneaster plants at Beaulieu Heath on 24 November 2016

Ruth Kernohan of HIWWT prepared maps to show the distribution of Cotoneaster recorded by Catherine with help from Richard and Megan during autumn 2016 in the vicinity of the former World War I airfield at East Boldre and the former World War II airfield at Beaulieu Heath.



“Hi Catherine, thank you for sending me the distributions map, we caught a lot! It was a brilliant opportunity to exercise some conservation skills, thank you very much for including me in the project. I hope to get involved with more projects like this in the future as I thoroughly enjoyed the Cotoneaster monitoring” email from Megan Woolley on 9 December 2016.

Volunteer activity – surveying

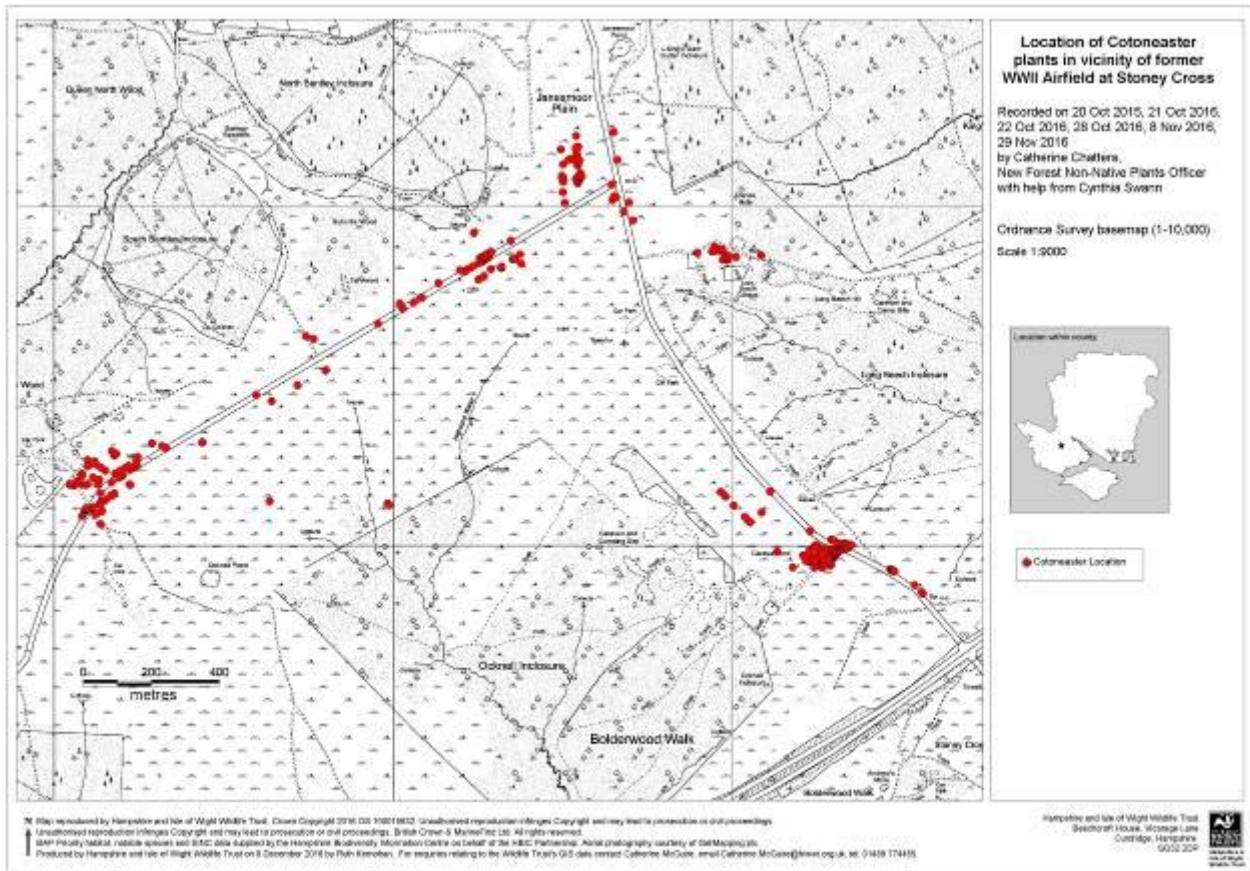
On 21 October 2016 volunteer Cynthia Swann helped Catherine Chatters to survey the Cotoneaster growing to the north of the main run-way of the former World War II airfield at Stoney Cross.

On 21 December 2016 local botanist Alison Bolton showed Catherine Chatters where Cotoneaster is growing on the Open Forest in the vicinity of Greenmoor and Crockford. Alison had also provided grid references of where Cotoneaster is growing in the vicinity of Setley Pond and along road verges near Sway.



Volunteer Cynthia Swann helping to survey Cotoneaster at Stoney Cross on 21 October 2016

Ruth Kernohan prepared a map to show the distribution of Cotoneaster recorded at Stoney Cross in the vicinity of the former World War II airfield. This is based on the surveying undertaken by Catherine in October 2015 and autumn 2016 with help from Cynthia Swann.



Cotoneaster at Stoney Cross during autumn 2016

Volunteer activity - research

Excel Southampton Excel Internship Programme – research in 2016

In September 2016 Sophie Watts and Ben O’Hickey of Southampton University produced their final report summarising the results of the monitoring they undertook during summer 2016 on behalf of the NFNNPP to assess the ten sample sites where American skunk cabbage, Japanese knotweed, Himalayan balsam and giant hogweed are being controlled through the HLF-funded ‘Our Past, Our Future’ Landscape Partnership Scheme. Sophie and Ben will present the results of their research at Southampton University on the afternoon of Wednesday 1 February 2017.

Additional non-native plants targeted/encountered by NFNNPP

Nerine bowdenii

On 31 October 2016 the NFNNPP was alerted to a patch of *Nerine bowdenii* which had been planted on the Crown Land on the Open Forest at Picket Post. Catherine removed these on 2 November 2016.



Nerine bowdenii plants dug up by NFNNPP at Picket Post on 2 November 2016

Planning control work for 2017

The Project Officers have spent a substantial amount of time during autumn / winter 2016 planning the programme of volunteer Himalayan balsam pulls for Summer 2017, so that details can be entered on the HIWWT website.

Catherine has obtained quotations from potential contractors for work on Crown Land during 2017, to be funded by the New Forest Higher Level Stewardship scheme and the Forestry Commission. She has arranged a meeting on 14 February 2017 for potential contractors wishing to provide quotations for work to be funded through ‘Our Past, Our Future’.

‘Our Past, Our Future’ Landscape Partnership Scheme

On 6 October 2016 Jo Gore and Catherine Chatters attended the ‘OPOF Team Day’ organised by Rachael Gallagher. The event was an opportunity to meet other OPOF Project Officers, to hear updates about all projects and to get involved in a practical activity recording gravestones in Lyndhurst churchyard.



Jo Gore and Debbie Whitfield of HIWWT during the OPOF Team Day in Lyndhurst on 6 October 2016

On 26 October 2016 Catherine responded to a request from Richard Austin (OPOF Volunteer Training & Mentoring Co-ordinator) for text and photographs to be included in the OPOF Volunteers’ Newsletter for November and December 2016.

On 10 November 2016 Catherine provided comments to Rachael Gallagher on the draft OPOF Newsletter for November 2016.

On 7 December 2016 Catherine contacted relevant volunteers who had helped the NFNNPP , to invite them to a volunteer celebration event being organised by the New Forest National Park Authority on 19 January 2017 in Lyndhurst Community Centre.

Our Past, Our Future
Working together for the New Forest

Supported by
The National Lottery[®]
through the Heritage Lottery Fund

heritage
lottery fund

Volunteer 'thank you' event on 19 October 2016

On 19 October 2016 28 volunteers attended an afternoon tea party hosted by the NFNNPP Project Officers to thank people who helped with balsam-pulling during 2016. Jo and Catherine gave a presentation to review the work undertaken on the Cadnam River, the Avon Water, the Beaulieu River and the Lymington River and its tributaries. The event, held at Brockenhurst Village Hall, was arranged in response to a request by volunteer Madeline McKenna for an afternoon tea party, in preference to an evening party. It proved to be a popular choice and was a good opportunity for people to meet socially and was appreciated by the people who attended, as can be seen from the responses received:-

“Thank you for the lovely afternoon at Brockenhurst Village Hall, with the chance to meet new people and find out how your projects throughout the Forest are progressing. It does give us volunteers a boost to know we can make a bit of a difference. Kind regards”

email from Tony Foster, volunteer, on 19 October 2016

“Dear Catherine, thank you very much for providing such a generous afternoon tea today. It was a pleasure to see you and the balsam pullers, and to have an update from you and Jo about the progress this season. I hope to be able to help again in 2017. Best Wishes”

email from David Smart, volunteer, on 19 October 2016

“Hi Catherine, very nice afternoon today, good food too, I was spoilt by Jo waiting on me with a cup of tea!”

email from Richard Hughes, volunteer, on 19 October 2016

“Dear Catherine, you have just beaten me to it as I was about to thank both you and Jo for the wonderful spread you put on for us. It was delicious, and I'm sure much appreciated by all. It was a lovely afternoon. Please will you share this with Jo, you both are certainly keeping a lot of people happy! Thanks again”

email from Patsy Baverstock, volunteer, on 19 October 2016

“Hello Catherine, thank you, and Jo, very much for the lovely afternoon tea you put on - it was very kind and I really enjoyed seeing old and new faces. Again, thank you”

Email from Chrissie Whiffen, volunteer, on 21 October 2016



Patsy Baverstock, volunteer, and Richard Austin ('Our Past, Our Future' Volunteer Training and Mentoring Coordinator at the New Forest National Park Authority), kindly washing up after the tea party on 19 October 2016

Promotional Events and awareness-raising

Talk to Lockerley and District Horticultural Society on Thursday 15 September 2016

Catherine gave a talk about invasive non-native plants to Lockerley and District Horticultural Society on the evening of Thursday 15 September, following their AGM. Anthea Hawkins who attended the talk emailed Catherine on 21 September 2016 to say 'Thank you so much for your interesting talk last week. I have just been reading a very interesting article in one of the supplements about Japanese knotweed and what a problem it is becoming especially down in Wales. I then played golf yesterday over near Downton and the course was covered in Himalayan balsam. All very topical, so I was lecturing my fellow players on the evils of balsam!'

Lymington to Keyhaven Nature Reserve Open Day on Sunday 18 September 2016

Catherine and Jo manned a display at the Lymington to Keyhaven Nature Reserve Open Day on Sunday 18 September. The display attracted a lot of visitors and eight people expressed an interest in helping with Himalayan balsam pulls in summer 2017. Catherine sent emails to people who had expressed an interest in helping with the balsam in 2017 to let them know that NFNNPP will send them details of work parties when the 2017 programme has been prepared.



Visitors looking at the New Forest Non-Native Plant Project display at Lymington to Keyhaven Nature Reserve Open Day on 18 September 2016

Talk to Downton Horticultural Society on Friday 25 November 2016

Catherine gave a presentation to members of the Downton Horticultural Society on the evening of Friday 25 November 2016. The presentation was well received and a number of people asked questions and expressed interest in volunteering to pull Himalayan balsam in 2017.

Promotion of the 'Be Plant Wise' campaign and 'Check, Clean, Dry' campaigns



The NFNNPP promoted the Be Plant Wise and Check, Clean, Dry campaigns at the Lymington to Keyhaven Nature Reserve Open Day on Sunday 18 September 2016



Promoting the 'Be Plant Wise' campaign on 18 September 2016



Tom Clarke, Head Gardener of Exbury Gardens, promoting the Be Plant Wise campaign at the training event organised by NFNNPP held at Exbury Gardens on 27 September 2016

Copies of 'Be Plant Wise' leaflets were handed out to members of Downton Horticultural Society on the evening of Friday 25 November 2016.

Training provided by the New Forest Non-Native Plants Project

Event for horticulturists at Exbury Gardens on 27 September 2016

The NFNNPP hosted a half-day training session to raise awareness about the problems caused by invasive garden plants. The event was jointly led by Tom Clarke, the recently appointed Head Gardener of Exbury Gardens, Linda Runnacles of Exbury Gardens and Catherine Chatters. It was attended by a range of amateur gardeners and professional horticulturists including the Head Gardener of Furzey Gardens and the Head Gardener of the Sir Harold Hillier Gardens.

After an indoor introductory session Tom led a tour of Exbury Gardens to discuss a range of species including American skunk cabbage, *Crococsmia x crocosmiiflora*, *Rhododendron ponticum*, *Gaultheria shallon* and invasive species of bamboo.



Participants doing the identification quiz at Exbury on 27 September 2016





Jo Gore with participants during the tour of Exbury Gardens on 27 September 2016

“Hi Catherine. I intended to write to you to say how much we enjoyed the day at Exbury but we have just been so very busy! You are a brilliant speaker and the whole event was so informative. We were shocked to hear the problems that our lovely *Rhodo ponticum* is causing! It was also great to meet the rest of the group and be able to compare notes on our respective societies. Tim, myself and the Bartley Hort committee hosted an Inter-Society evening last Thursday and met up with the two from Woodlands Gardening Club and Linda Runnacles again that night. PS: Will be urging our speaker secretary to get in touch for a future talk”.

Email from Tina Shaw of Bartley Horticultural Society on 5 October 2016

“Dear Catherine, thank you so much for organizing the morning at Exbury. It was very informative as well as enjoyable”

Email from Susanna Zardis, Chairman of Woodlands Gardening Club on 10 October 2016

Event for New Forest District Council staff on 1 November 2016

Forty-three members of staff from NFDC attended a training day at Testwood Lakes Centre on Tuesday 1 November 2016. The event was an opportunity for the Project Officers to raise awareness about invasive non-native plants. Jo and Catherine gave a presentation focussing on identification of invasive non-native plants, the problems they cause and control techniques. Legal aspects were also briefly covered. Jo and Catherine devised an identification quiz to encourage participation and asked delegates to put coloured dots on a map to indicate where they had seen invasive non-native plants. Feed-back forms were completed for analysis by NFDC.



New Forest District Council staff doing the identification quiz during the awareness-raising session at Testwood on 1 November 2016



Brian Cummings of NFDC adding his sightings of invasive non-native plants to the map of the New Forest during the awareness-raising session on 1 November 2016

“Hi Catherine & Jo, thanks for your email and kind words. I want to echo these with thanks on behalf of NFDC for your help, providing the venue and the very interesting and informative talk. We will be going through the feedback sheets and will let you know the findings. Many respondents mentioned they particularly enjoyed your talk. I propose to circulate your contact details to our Supervisors so they can pass on sightings or get in touch regarding any particular issues/sites. We look forward to working more closely with Hampshire & IOW Wildlife Trust in the future and building the relationship between the organisations. Thanks & Regards”

E-mail from Simon Hanney, Open Spaces Officer, Operations, New Forest District Council on 2 November 2016

Training attended by the Project Officers

Property Care Association conference on 22 November 2016

Catherine attended a useful conference on invasive plants titled ‘Risk, Roots and Research’ in London at the Institution of Engineering and Technology on Tuesday 22 November 2016. The event, organised by the Property Care Association, was an opportunity to meet Dr Neil Strong of Network Rail and put a question to the ‘Panel Debate’ at the end of the conference regarding the need for effective control of Himalayan balsam on Network Rail’s land.

Speakers included Dr Richard Shaw (CABI) on research into biological control, Dr Daniel Jones (Swansea University) on control of Japanese knotweed, Dr Johan van Valkenburg (Netherlands Plant Protection Organisation) on management of non-native aquatic plants, Dr John Bailey (formerly of University of Leicester) on Japanese knotweed research, Dr Mark Fennell (Environmental Consultant, AECOM) on surveying and mapping invasive non-native species, Robin Payne (formerly SNH) on changes in the law on the management of non-native species, James Ginley (Head of Professional Risk, Legal & General) on Japanese knotweed and property risk, Leo Charalambides (Barrister) on the current legal situation and on-going case law.



Organising future training sessions

Training for fishermen and anglers

Invitations were sent out on 14 December 2016 for a NFNNPP training day to be held at Testwood Lakes Education Centre on Thursday 9 March 2017 to raise awareness about invasive non-native plants amongst fishermen, anglers and river keepers.

Training for National Trust volunteers

Catherine Supple of the National Trust has agreed Tuesday 31 October 2017 for a training session to be hosted by NFNNPP at Testwood Education Centre to raise awareness about invasive non-native plants amongst the National Trust’s New Forest volunteers.

Tree Popper trial

During the workshop hosted by the Great Britain Non-Native Species Secretariat (GBNNSS) in January 2016, Catherine Chatters gave a presentation on the work being undertaken by the NFNNPP in relation to invasive non-native Cotoneaster species. Alan Martin of Nature Conservation Services was present at the workshop and offered to come to the New Forest to undertake a trial, free of charge, to find out whether Tree Poppers could be used successfully to remove Cotoneasters. Following a site meeting with the Forestry Commission on 9 November, the trial was undertaken on 18 November at Stoney Cross in the vicinity of the former World War II airfield.



Alan Martin (Nature Conservation Services) and Lucy Andrews (FC) trialling a large Tree Popper to remove Cotoneaster at Stoney Cross on 18 November 2016

One major advantage of the Tree Popper is that it can be used in the autumn/winter when the Cotoneaster plants are easy to identify due to the red berries and colourful foliage. However, the process was slow due to the prostrate habit of the Cotoneaster plants and the fact they are often multi-stemmed and / or growing amongst other shrubby vegetation such as gorse.

Having considered the advantages and difficulties of using a Tree Popper, it was concluded that herbicide treatment would be a more appropriate method in the New Forest due mainly to the relative speed of application and also to the fact plants are left to die *in situ*.

Catherine prepared a file note summarising the Tree Popper trial.



Tree Popper gripping Cotoneaster stem



Alan Martin using a Tree Popper to remove an isolated, small Cotoneaster plant

Other work

Meeting with Professor Kamigawara and Mr Shinya Hieda

On 8 September 2016 the Project Officers met Professor Kenji Kamigawara and Mr Shinya Hieda of the University of Shiga Prefecture, Japan, to discuss control of creeping water primrose *Ludwigia grandiflora*.

Professor Kamigawara teaches environmental law and policy in the School of Environmental Science and Mr Hieda is studying for a Masters degree. Professor Kamigawara had contacted Jo and Catherine on 8 July 2016 to request a meeting as *Ludwigia grandiflora* has invaded Lake Biwa where it grows amongst alligator weed *Alternanthera philoxeroides*. Until 2013 Professor Kamigawara was an official in the Ministry of the Environment; he is interested in the social dimension of invasive alien plant management and is preparing a comparative study on social response to the control of *Ludwigia grandiflora* in Japan, France and the UK. He had visited wetlands in Brittany last year and had seen reports prepared by Jo and Catherine and hoped to gain an insight into the work undertaken at Breamore Marsh to control this species.

Jo and Catherine met Professor Kamigawara and Mr Hieda at Testwood in the morning and Jo gave a presentation about the work undertaken by HIWWT at Breamore Marsh. In the afternoon Jo took them to Breamore for a site visit which they thoroughly appreciated.



Jo Gore with Professor Kenji Kamigawara and Mr Shinya Hieda of the University of Shiga Prefecture in Japan, at Testwood on 8 September 2016



On 29 September 2016 Professor Kamigawara emailed Jo and Catherine to say “Thank you very much for meeting us and guiding us to the Round pond on 8th September. Those were not only informative but also impressive experiences for us.” He sought permission to use the photo below in the report he had drafted to be up-loaded to the website of the School of Environmental Policy and Planning in the Department of Environmental Science of the University of Shiga Prefecture. Professor Kamigawara expected the main readers to be high school students considering applying to the University.



NFNNPP Officers with Mr Shinya Hieda on 8 September 2016

HIWWT Volunteer 'thank you' event on 1 October 2016

On Saturday 1 October 2016 Hampshire & Isle of Wight Wildlife Trust held an event at Testwood Lakes to thank people who have volunteered with the Wildlife Trust during the past year. Jo and Catherine baked cakes to be served at this event.

PCA Technical Note on American skunk cabbage

On 5 October 2016 Dr Max Wade, Technical Director, Ecology (UK and Ireland) AECOM, emailed Catherine and asked for comments on the Property Care Association's draft Technical Note on the Management of American skunk cabbage. Catherine submitted comments on 11 October. On 17 November 2016 Max asked Catherine whether he could use her photographs of American skunk cabbage in a Manual to be based on the Technical Note and also asked her to contribute to a Technical Note on Pitcher Plants *Sarracenia purpurea*.

Community Protection Notice

On 18 November 2016 Craig Lee (Senior Policy Adviser, Invasive Non-native Species Team) of DEFRA, emailed Catherine to say:

"I am giving a talk next Friday at the UK Wildlife Enforcers conference (part of the conference that only involves wildlife crime officers). I'd like to make reference to your CPN, not only because it was the first and only one so far made, but also because it was made by the Police. I seem to recall you sending me some more details including a pic of you on the site (which I'd like to use for the presentation if you don't mind). It would also be good to know the name of the officer involved as well as he may be at the conference and it might be appropriate to thank him from the stage for his support?"

Catherine replied to Craig on 18 November and sent him a variety of photographs.

Advice

On 22 September 2016 the receptionist at NFNPA explained that a tree surgeon had sought advice about control of Japanese knotweed at Marchwood. Catherine telephoned him (Steve Wood of SMW Consulting) on 22 September and sent guidance and information booklets.

On 24 October 2016 Adam Wells of Natural England sought advice from Catherine regarding control of parrot's feather which has invaded a fishing lake and the lake further upstream. Catherine replied on 24 October and gave Adam contact details for Kevin Ackerman of Food and Environmental Ltd who has undertaken control of parrot's feather on behalf of the NFNNPP.

On 4 November 2016 Catherine Chatters met Andy Harding, Assistant Highways Manager, HCC Highways, at Lyndhurst to discuss the need for action to be taken to control the Himalayan balsam growing in the road verge to the west of the A337.

On 14 November 2016 Susan Witcher, Clerk to Hordle Parish Council, sought advice from Catherine regarding Japanese knotweed on a site subject to a planning application; Catherine replied on the telephone and send guidance notes via email on 14 November.

On 9 December Peter Jackson, a consultant, emailed Catherine seeking advice on control of Cotoneaster at Newborough Warren, Anglesey. Catherine advised on the 'phone on 12 December.

HIWWT staff meeting

The Project Officers attended the HIWWT staff meetings on 12 October and 6 December 2016.

HIWWT brand audit

On 8 December 2016 Catherine sent her colleague Caroline Meech examples of communication materials prepared by the NFNNPP.

New Forest Catchment Partnership

On 8 December 2016 Catherine prepared text for an article to be included in the New Forest Catchment Partnership newsletter.

HIWWT land advice mapping

In December 2016 Catherine and Jo completed the HIWWT GIS mapping exercise to record where land advice has been given / practical help undertaken by the NFNNPP during 2016/17.

Preparation of maps to show where work was carried out by NFNNPP during 2016

Catherine McGuire and Ruth Kernohan of HIWWT prepared maps to show where control work has been undertaken on behalf of NFNNPP during 2016. The maps are included in Appendix 2 of this Steering Group report and relate to the following species:-

- American skunk cabbage
- Bamboo
- Bog arum
- Buddleia
- Cotoneaster
- Floating Pennywort
- Giant hogweed
- Golden Club
- Himalayan balsam
- Himalayan knotweed
- *Iris laevigata*
- Japanese knotweed
- Montbretia
- *Nerene bowdenii*
- Parrot's feather
- Pitcher Plant
- Three-cornered Garlic

Annual leave

Catherine took annual leave in late August and early September 2016. During time spent in Norfolk, she came across a Check, Clean, Dry sign on the National Trust property at Felbrigg Hall.



Check, Clean, Dry sign spotted by Catherine whilst on holiday in Norfolk



Whilst on holiday in Norfolk, Catherine came across variegated Japanese knotweed (fortunately growing in a pot!) at East Ruston Old Vicarage Gardens.



Variegated Japanese knotweed growing in a pot at East Ruston Old Vicarage Gardens, Norfolk



Whilst on holiday in The Black Mountains during October 2016, Catherine came across Himalayan balsam growing in the Ewyas Valley and the adjacent steep, bracken-infested wooded hillsides. Although the Monnow Rivers Association has a Project to tackle Himalayan balsam in this area, the balsam growing on the steep slopes clearly presents a significant challenge to effective eradication.



Sign installed in The Ewyas Valley by The Monnow Rivers Association, as seen by Catherine during holiday in The Black Mountains in October 2016

Appendix 1 – Volunteer work parties led by the New Forest Non-Native Plants Project between September and December 2016

Appendix 2 – Maps showing location of control work undertaken on behalf of NFNNPP during 2016

Press releases – see attached sheets

Media coverage – see attached sheets

Report compiled by Catherine Chatters
New Forest Non-Native Plants Officer
Hampshire and Isle of Wight Wildlife Trust
Catherine.Chatters@hiwwt.org.uk
Telephone 023 8042 4205
Mobile 07770 923315

3 January 2017

The New Forest Non-Native Plants Project is hosted by
Hampshire & Isle of Wight Wildlife Trust.

The Project is grateful for support provided by a partnership of organisations:-



Our Past, Our Future
Working together for the New Forest



Appendix 1

Volunteer work parties led by the New Forest Non-Native Plants Project between September and December 2016

Himalayan balsam pulls led by the New Forest Non-Native Plants Project during September and October 2016:-

Monday 5 September 2016 – Lymington River (East side) - Leader: Jo Gore
1 volunteer x 5 hours = 5 hours

Wednesday 7 September 2016 – Lymington River - Leader: Jo Gore
2 volunteers x 5 hours = 10 hours

Monday 12 September 2016 – Lymington River with Lloyds Bank staff - Leader: Jo Gore
6 volunteers x 5 hours = 30 hours

Wednesday 14 September 2016 – Passford Water - Leader: Jo Gore
1 volunteer x 5 hours = 5 hours

Wednesday 21 September 2016 – Lymington River - Leader: Jo Gore
1 volunteer x 5 hours = 5 hours

Thursday 22 September 2016 – Lymington River and Mill Lawn Brook - Leader: Jo Gore
1 volunteer x 5 hours = 5 hours

Friday 23 September 2016 – Lymington River with Oil Spill Response - Leader: Jo Gore
14 volunteers x 5 hours = 70 hours

Thursday 29 September 2016 – Lymington River - Leader: Jo Gore
1 volunteer x 5 hours = 5 hours

Monday 3 October 2016 – Lymington River and Passford Water - Leader: Jo Gore
1 volunteer x 5 hours = 5 hours

Total 140 hours

The total time spent by volunteers pulling Himalayan balsam with the NFNNPP during 2016 (May – October 2016) is 2,250.5 hours

Volunteer work party to control Pitcher Plants led by the New Forest Non-Native Plants Project in winter 2016:-

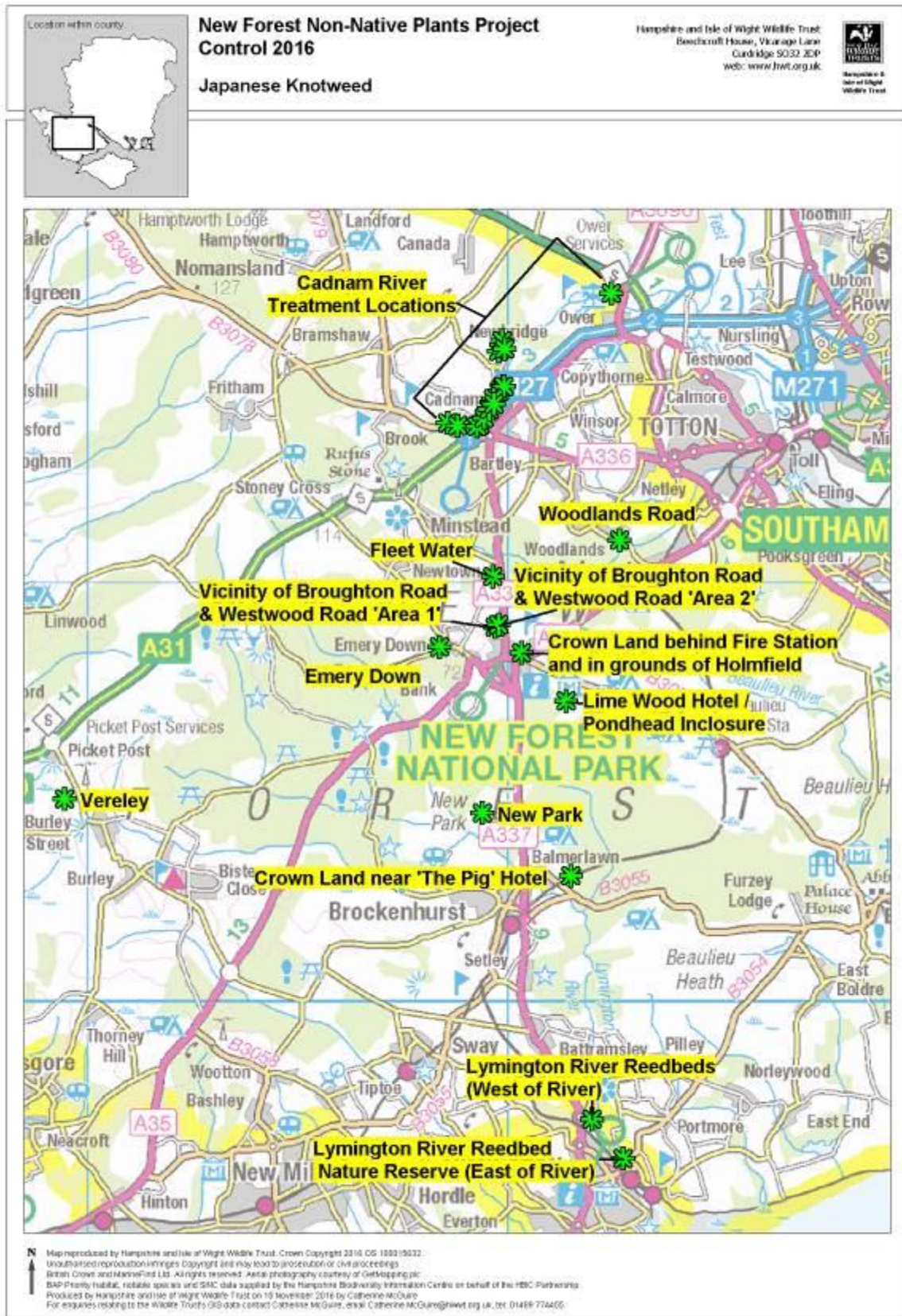
Monday 7 November 2016 – Holmsley Bog and Wootton Bridge Leader: Catherine Chatters
5 volunteers x 2 hours = 10 hours

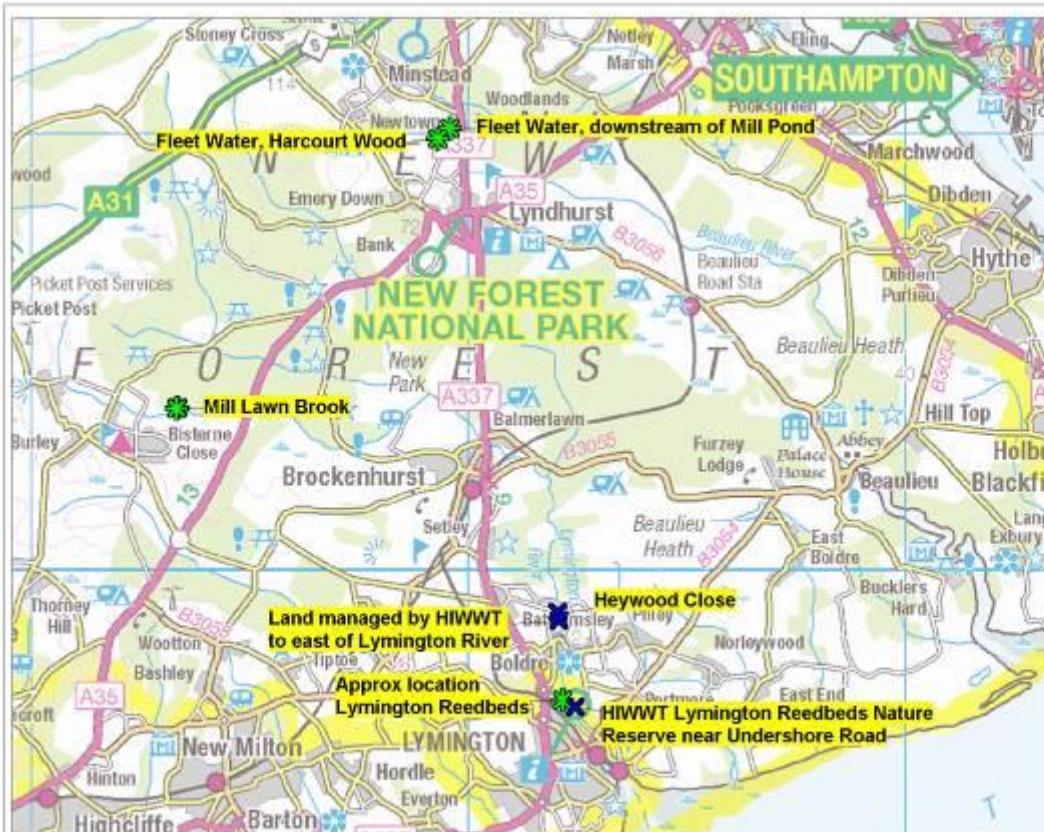
The total time spent by volunteers controlling Pitcher plants with the NFNNPP during 2016 is 21.5 hours

The total time spent by volunteers undertaking practical control work with the NFNNPP in 2016 (Himalayan balsam, Pitcher plants, American skunk cabbage) is 2,275 hours

Appendix 2

Maps showing location of control work undertaken on behalf of NFNNPP during 2016





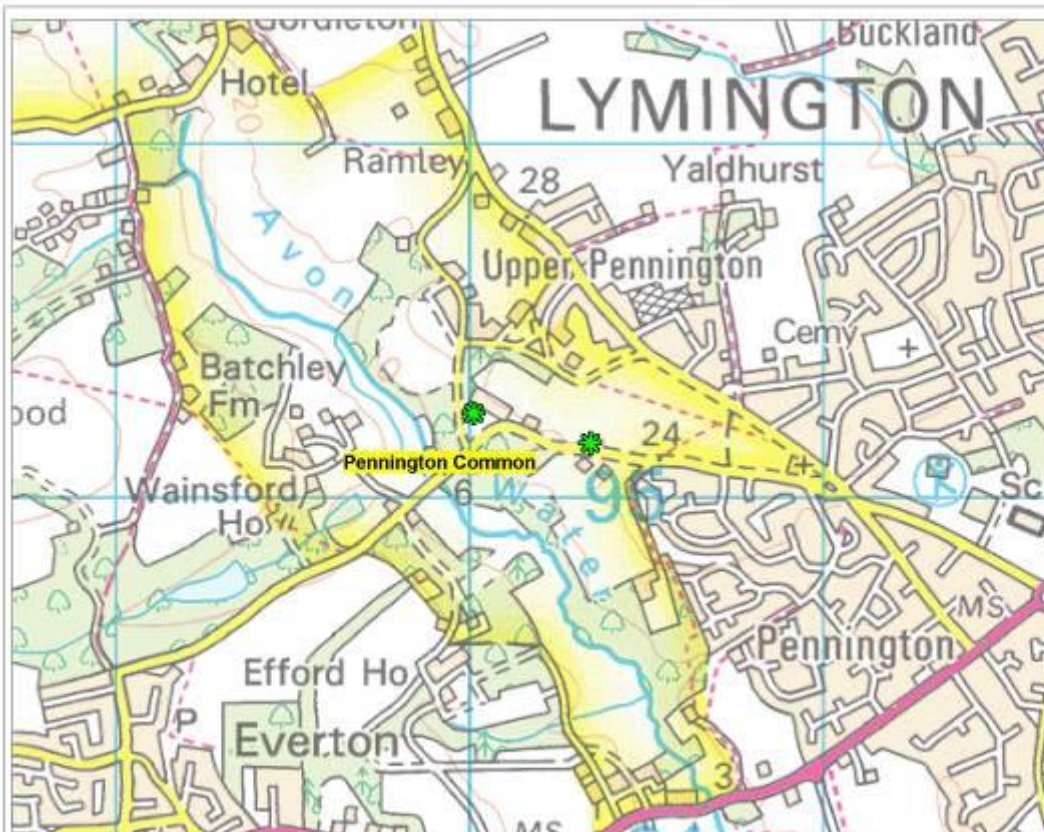
New Forest Non-Native Plants Project Control 2016

American Skunk Cabbage



- Control Point Locations**
- ★ Contractor
 - ✕ Volunteer Project Officer

Map reproduced by Hampshire and Isle of Wight Wildlife Trust (Ordinance Survey licence no. 100019532) from the with the permission of Her Majesty's Stationery Office. Crown Copyright 2015. Unauthorised reproduction infringes Copyright and may lead to prosecution or civil proceedings. B1634 Crown and Her Majesty's Stationery Office. All rights reserved. GAP Priority habitat, nature spaces and SNCI data supplied by the Hampshire Biodiversity Information Centre on behalf of the H&I Wildlife Trust. Aerial photography courtesy of Ordnance Survey. Produced by Hampshire and Isle of Wight Wildlife Trust on 18 November 2015 by Catherine McGuire. For enquiries relating to the Wildlife Trusts' GIS data contact Catherine McGuire, email Catherine.McGuire@hwt.org.uk, tel: 01499 714455

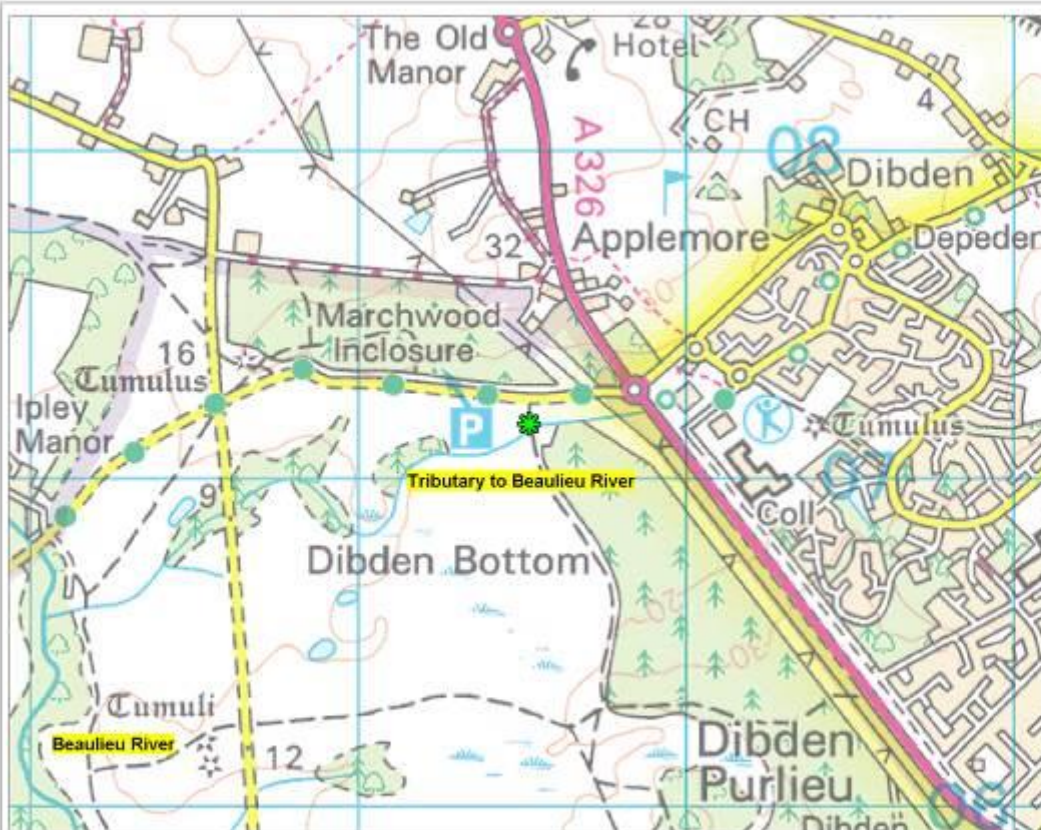


New Forest Non-Native Plants Project Control 2016

Bamboo



Map reproduced by Hampshire and Isle of Wight Wildlife Trust (Ordinance Survey licence no. 100019532) from the with the permission of Her Majesty's Stationery Office. Crown Copyright 2015. Unauthorised reproduction infringes Copyright and may lead to prosecution or civil proceedings. B1634 Crown and Her Majesty's Stationery Office. All rights reserved. GAP Priority habitat, nature spaces and SNCI data supplied by the Hampshire Biodiversity Information Centre on behalf of the H&I Wildlife Trust. Aerial photography courtesy of Ordnance Survey. Produced by Hampshire and Isle of Wight Wildlife Trust on 17 October 2015 by Catherine McGuire. For enquiries relating to the Wildlife Trusts' GIS data contact Catherine McGuire, email Catherine.McGuire@hwt.org.uk, tel: 01499 714455



New Forest Non-Native Plants Project Control 2016

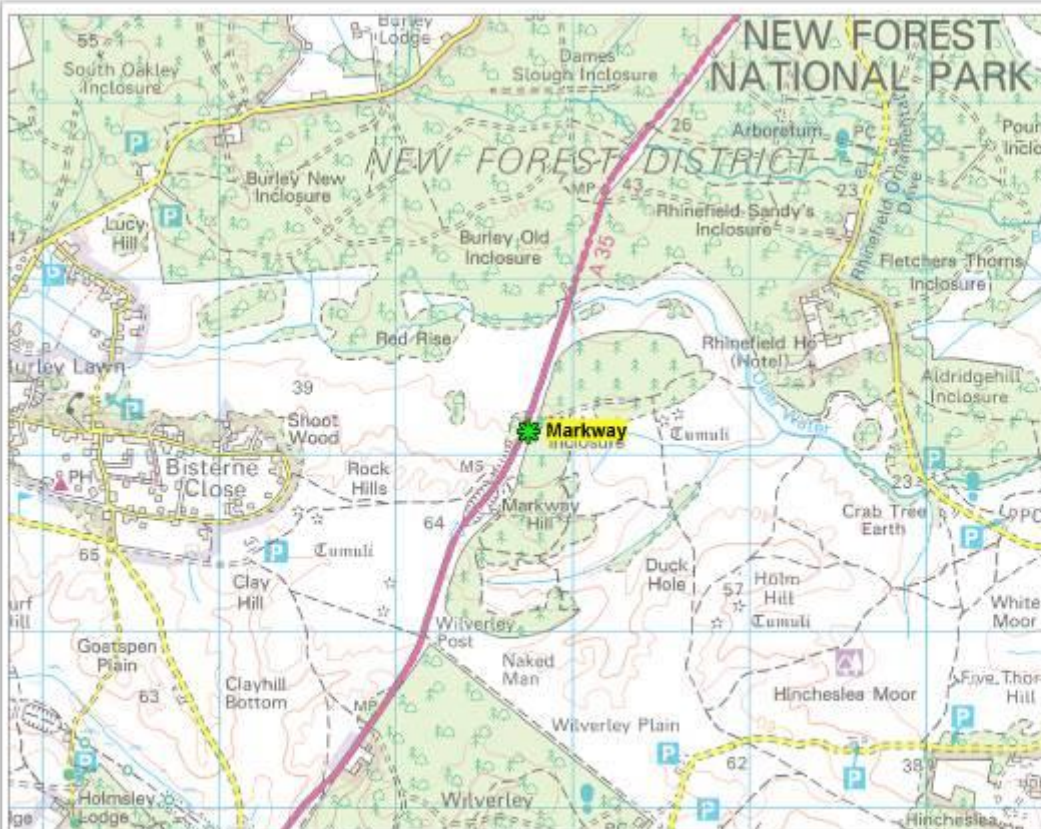
Bog Arum

Calla palustris



Map reproduced by Hampshire and Isle of Wight Wildlife Trust (Ordinance Survey Licence no. 10019532) from the with the permission of Her Majesty's Stationery Office. Crown Copyright 2016. Unauthorised reproduction infringes Copyright and may lead to prosecution or civil proceedings. B1634 Crown and Museum No 133. All rights reserved. GMP Printers/Mapist, outside spaces and SINC 400 supplied by the Hampshire Biodiversity Information Centre in concert of the H&I.C. Partnership. Aerial photography courtesy of Ordnance Survey. Produced by Hampshire and Isle of Wight Wildlife Trust on 18 November 2016 by Catherine McGuire. For enquiries relating to the Wildlife Trusts 01256 666666 contact Catherine McGuire, email Catherine.McGuire@new.org.uk, tel: 01489 779455

Hampshire and Isle of Wight Wildlife Trust
Beaconsfield House, Victoria Lane
Cottisford, Haverhill
SO22 2CP



New Forest Non-Native Plants Project Control 2016

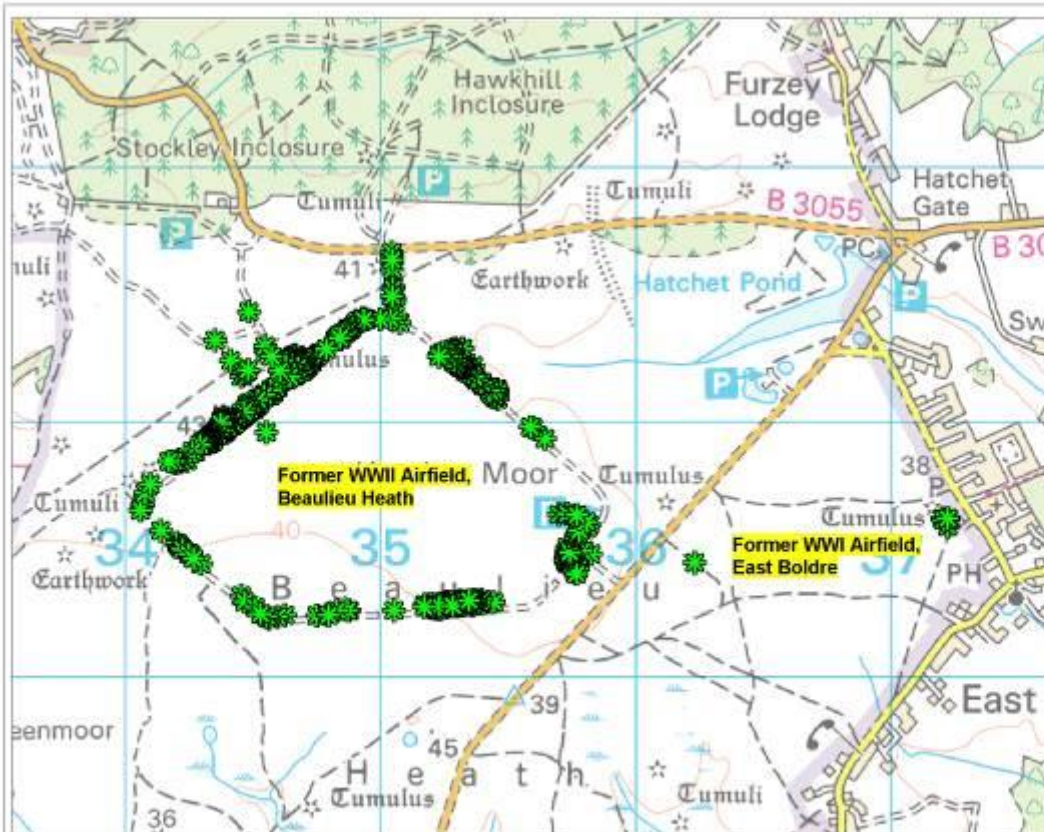
Buddleia



Map reproduced by Hampshire and Isle of Wight Wildlife Trust (Ordinance Survey Licence no. 10019532) from the with the permission of Her Majesty's Stationery Office. Crown Copyright 2016. Unauthorised reproduction infringes Copyright and may lead to prosecution or civil proceedings. B1634 Crown and Museum No 133. All rights reserved. GMP Printers/Mapist, outside spaces and SINC 400 supplied by the Hampshire Biodiversity Information Centre in concert of the H&I.C. Partnership. Aerial photography courtesy of Ordnance Survey. Produced by Hampshire and Isle of Wight Wildlife Trust on 15 November 2016 by Catherine McGuire. For enquiries relating to the Wildlife Trusts 01256 666666 contact Catherine McGuire, email Catherine.McGuire@new.org.uk, tel: 01489 779455

Hampshire and Isle of Wight Wildlife Trust
Beaconsfield House, Victoria Lane
Cottisford, Haverhill
SO22 2CP



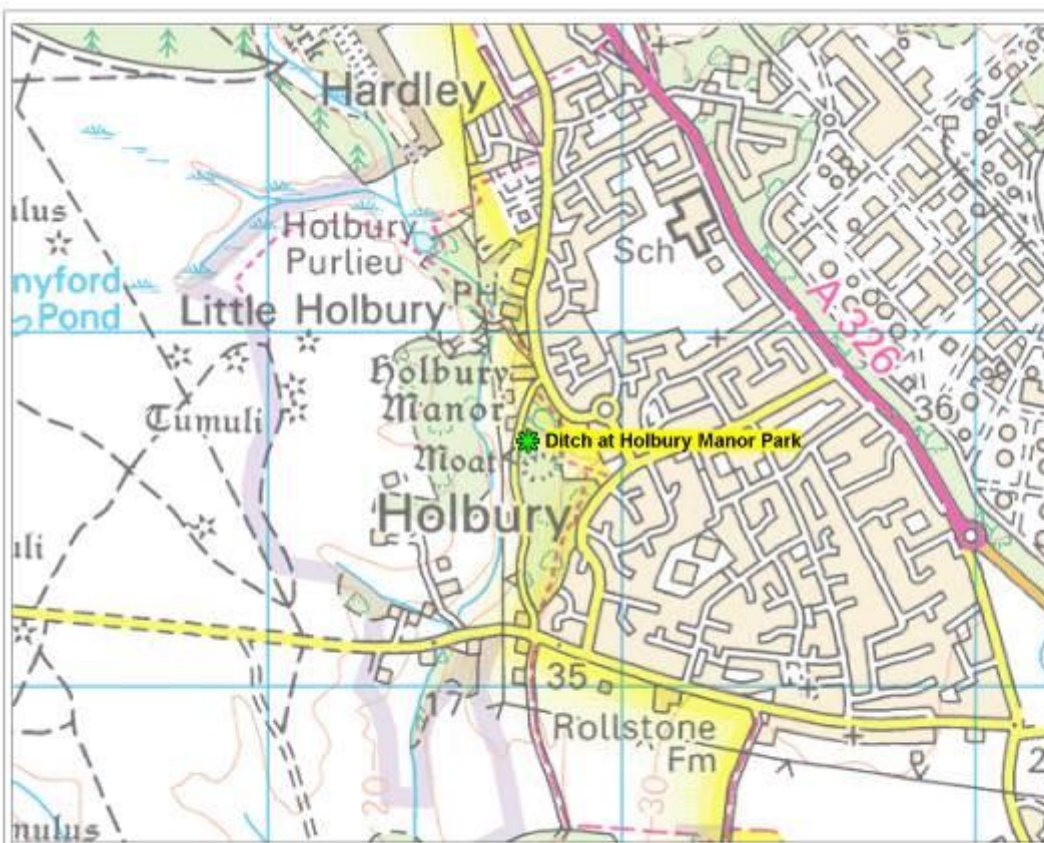


New Forest Non-Native Plants Project Control 2016

Cotoneaster



Map reproduced by Hampshire and Isle of Wight Wildlife Trust (Ordnance Survey Licence No. 100015532) from the with the permission of Her Majesty's Stationery Office. Crown Copyright 2016. Unauthorised reproduction infringes Copyright and may lead to prosecution or civil proceedings. B183 Crown and Moorland 1:25,000 not to be used for navigation. BNP Plants/Habitat, native species and SINC data supplied by The Hampshire Biodiversity Information Centre in concert with the H&I Partnership. Aerial photography courtesy of Ordnance Survey. Produced by Hampshire and Isle of Wight Wildlife Trust on 25 November 2016 by Catherine McGuire. For enquiries relating to the Wildlife Trusts GIS data contact Catherine McGuire, email Catherine.McGuire@hwt.org.uk, tel: 01489 714555

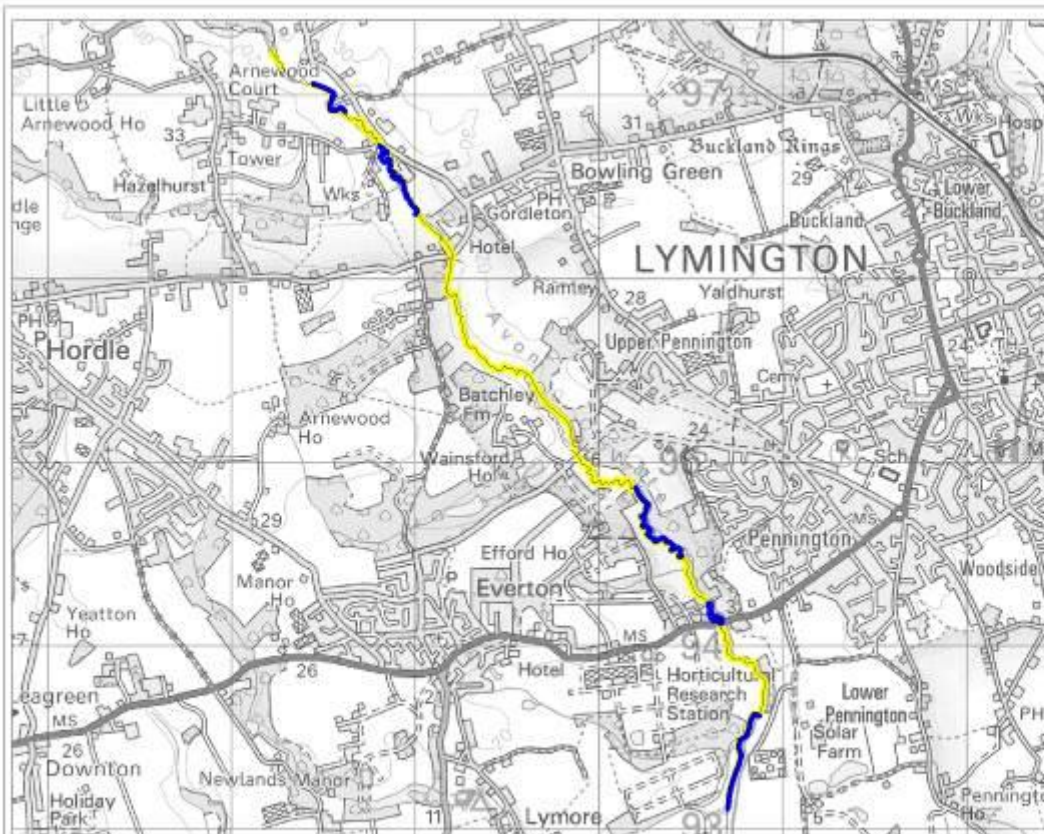


New Forest Non-Native Plants Project Control 2016

Floating Pennywort
Hydrocotyle ranunculoides



Map reproduced by Hampshire and Isle of Wight Wildlife Trust (Ordnance Survey Licence No. 100015532) from the with the permission of Her Majesty's Stationery Office. Crown Copyright 2016. Unauthorised reproduction infringes Copyright and may lead to prosecution or civil proceedings. B183 Crown and Moorland 1:25,000 not to be used for navigation. BNP Plants/Habitat, native species and SINC data supplied by The Hampshire Biodiversity Information Centre in concert with the H&I Partnership. Aerial photography courtesy of Ordnance Survey. Produced by Hampshire and Isle of Wight Wildlife Trust on 25 November 2016 by Catherine McGuire. For enquiries relating to the Wildlife Trusts GIS data contact Catherine McGuire, email Catherine.McGuire@hwt.org.uk, tel: 01489 714555

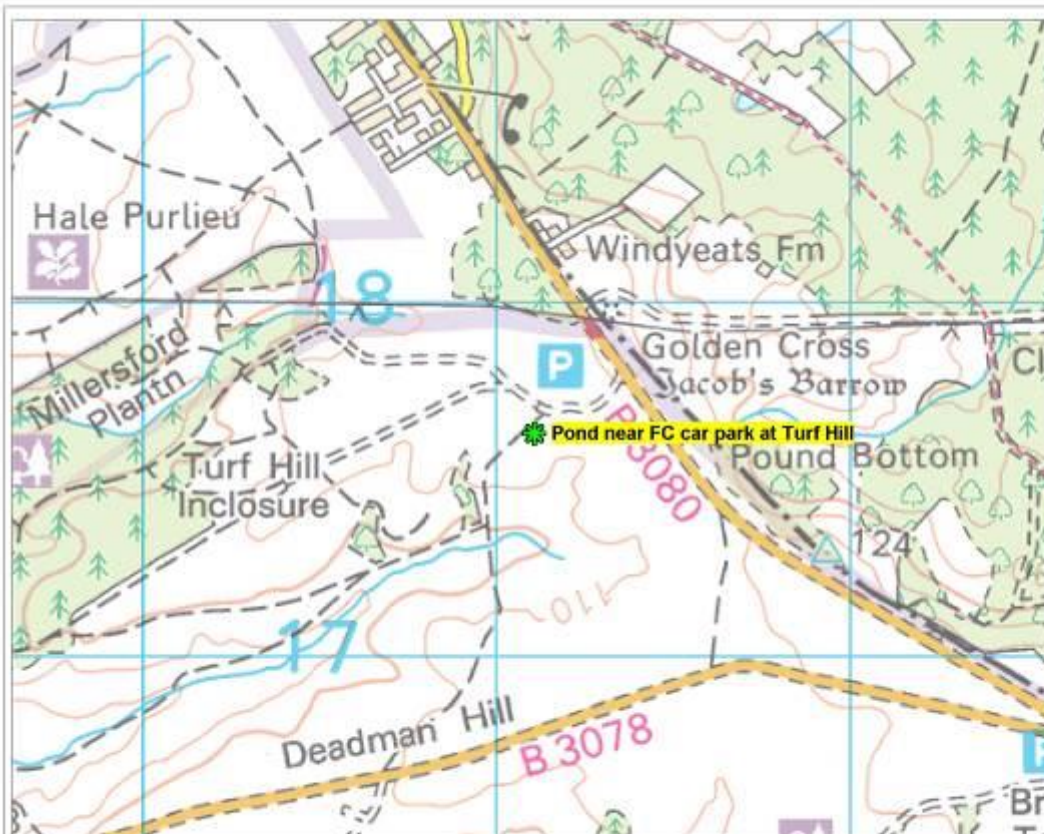


New Forest Non-Native Plants Project Control 2016
Giant Hogweed



- Herbicide treatment commissioned by MFNPP
- Work undertaken / organised by landowners or land managers

Map reproduced by Hampshire and Isle of Wight Wildlife Trust (Ordinance Survey Licence No. 100015532) from the with the permission of Her Majesty's Stationery Office. Crown Copyright 2016.
 Unauthorised reproduction in any form. Copyright and may lead to prosecution or civil proceedings. British Crown and Monarch and all rights reserved.
 GMP Printers/Maptek, nature species and SINC data supplied by the Hampshire Biodiversity Information Centre in context of the HEC Partnership. Aerial photography courtesy of Ordnance Survey.
 Produced by Hampshire and Isle of Wight Wildlife Trust on 25 November 2016 by Catherine McGuire. For enquiries relating to the Wildlife Trusts GIS data contact Catherine McGuire, email Catherine.McGuire@hwt.org.uk, tel: 01489 714655



New Forest Non-Native Plants Project Control 2016
Golden Club



Map reproduced by Hampshire and Isle of Wight Wildlife Trust (Ordinance Survey Licence No. 100015532) from the with the permission of Her Majesty's Stationery Office. Crown Copyright 2016.
 Unauthorised reproduction in any form. Copyright and may lead to prosecution or civil proceedings. British Crown and Monarch and all rights reserved.
 GMP Printers/Maptek, nature species and SINC data supplied by the Hampshire Biodiversity Information Centre in context of the HEC Partnership. Aerial photography courtesy of Ordnance Survey.
 Produced by Hampshire and Isle of Wight Wildlife Trust on 25 November 2016 by Catherine McGuire. For enquiries relating to the Wildlife Trusts GIS data contact Catherine McGuire, email Catherine.McGuire@hwt.org.uk, tel: 01489 714655

Location within county

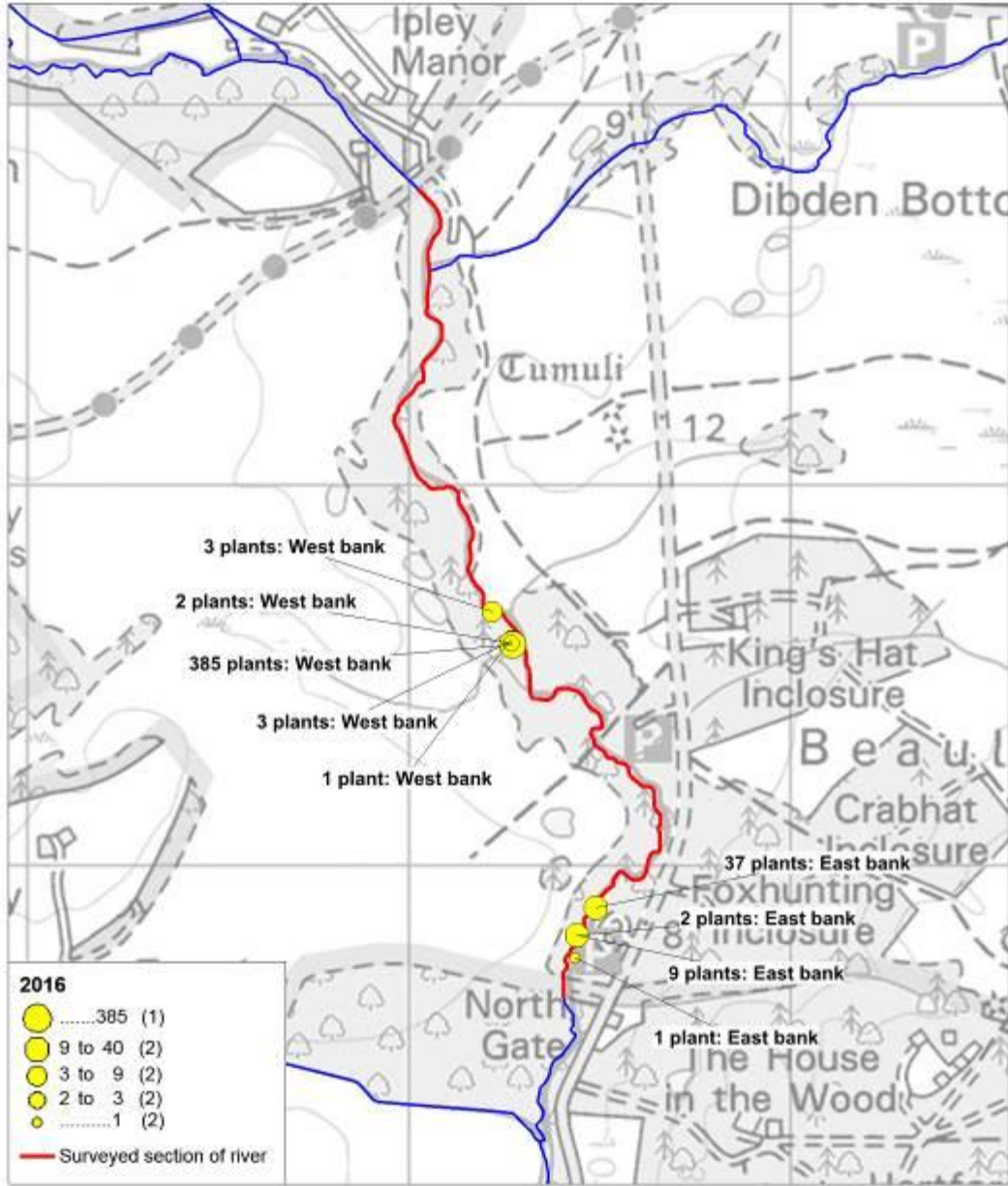


Himalayan Balsam Population Data 2016

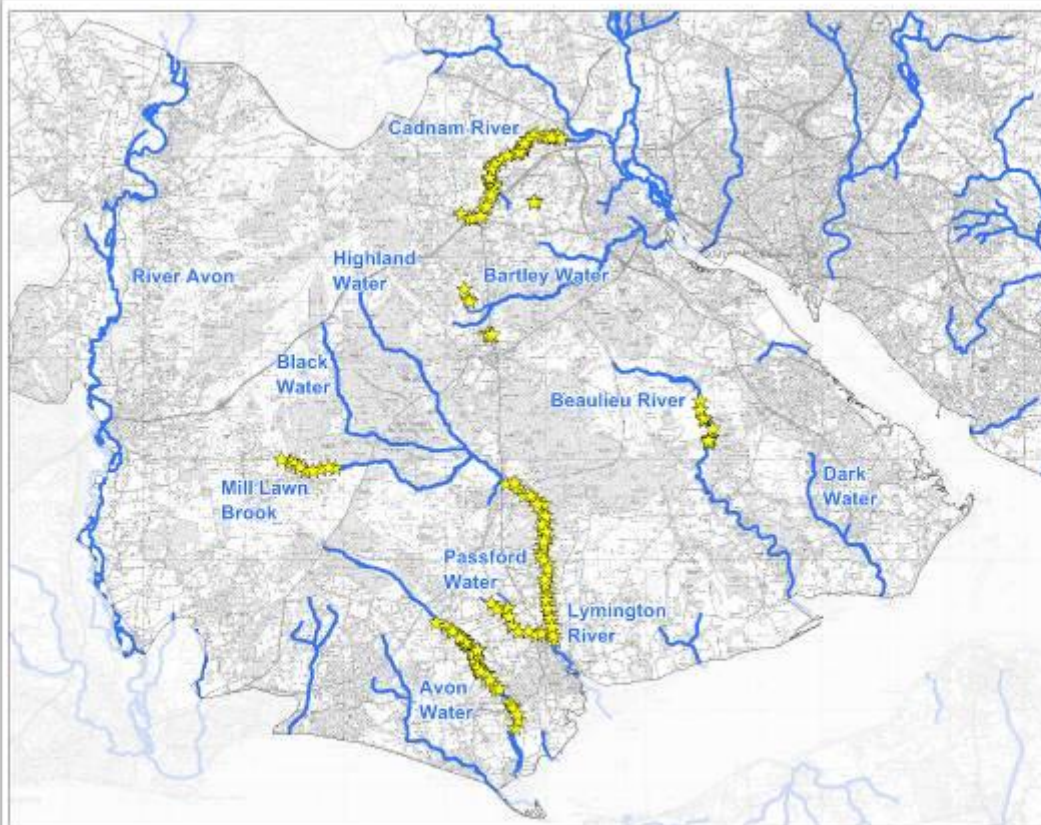
Beaulieu River

Scale 1:14,000 (A4)

Hampshire and Isle of Wight Wildlife Trust
Beechcroft House, Waverley Lane
Curdridge SO32 2DP
web: www.hwt.org.uk



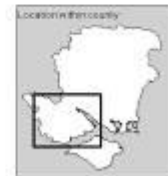
Map reproduced by Hampshire and Isle of Wight Wildlife Trust. Crown Copyright (2014) OS 100016402
 Unauthorised reproduction infringes Copyright and may lead to prosecution or civil proceedings.
 British Crown and Marine/ed Ltd. All rights reserved. Aerial photography courtesy of GeoMapping plc
 GAP Priority habitat, notable species and SSSI data supplied by the Hampshire Biodiversity Information Centre on behalf of the HWT Partnership.
 Produced by Hampshire and Isle of Wight Wildlife Trust on 3 October 2016 by Catherine McCune
 For enquiries relating to the Wildlife Trusts GIS data contact Catherine McCune, email Catherine.McCune@hwt.org.uk, tel: 01429 774455



New Forest Non-Native Plants Project:

Himalayan Balsam Control 2016

★ Balsam Pulling Location



Map reproduced by Hampshire and Isle of Wight Wildlife Trust (Ordinance Survey Licence no. 100011822) from the with the permission of Her Majesty's Stationery Office. Crown Copyright 2016.
 All rights reserved. All rights reserved. All rights reserved. All rights reserved. All rights reserved. All rights reserved. All rights reserved. All rights reserved. All rights reserved. All rights reserved.
 BAP Priority habitat, notable species and SNC data supplied by the Hampshire Biodiversity Information Centre on behalf of the RISC Partnership. Aerial photography courtesy of GeoMapping plc.
 Produced by Hampshire and Isle of Wight Wildlife Trust on 4 October 2016 by Catherine McGuire. For enquiries relating to the Wildlife Trusts GIS data contact Catherine McGuire, email Catherine.McGuire@hewt.org.uk, tel: 01489 774455.

Hampshire and Isle of Wight Wildlife Trust
 Bechoth's House, Victoria Lane
 Cursitor Road, Hampshire
 SO12 2DF



New Forest Non-Native Plants Project

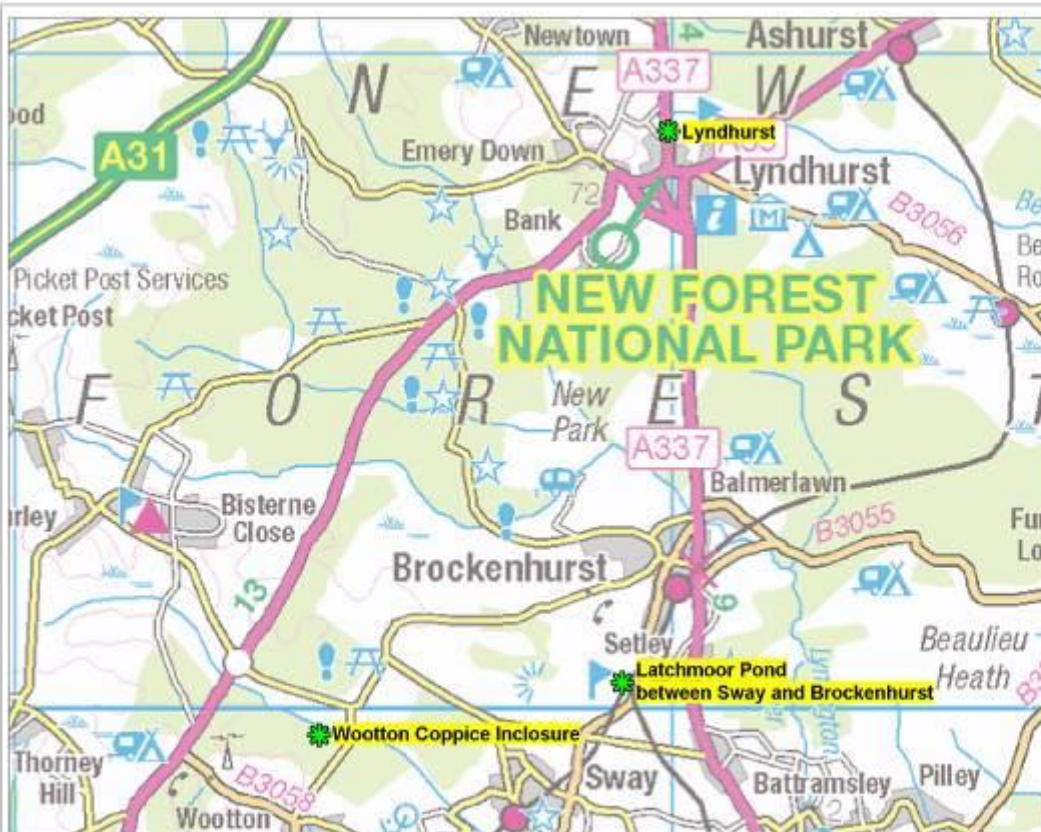
Himalayan Knotweed
Persicaria wallichii



Map reproduced by Hampshire and Isle of Wight Wildlife Trust (Ordinance Survey Licence no. 100011822) from the with the permission of Her Majesty's Stationery Office. Crown Copyright 2016.
 All rights reserved. All rights reserved. All rights reserved. All rights reserved. All rights reserved. All rights reserved. All rights reserved. All rights reserved. All rights reserved. All rights reserved.
 BAP Priority habitat, notable species and SNC data supplied by the Hampshire Biodiversity Information Centre on behalf of the RISC Partnership. Aerial photography courtesy of GeoMapping plc.
 Produced by Hampshire and Isle of Wight Wildlife Trust on 18 November 2016 by Catherine McGuire. For enquiries relating to the Wildlife Trusts GIS data contact Catherine McGuire, email Catherine.McGuire@hewt.org.uk, tel: 01489 774455.

Hampshire and Isle of Wight Wildlife Trust
 Bechoth's House, Victoria Lane
 Cursitor Road, Hampshire
 SO12 2DF





New Forest Non-Native Plants Project Control 2016

Iris laevigata



Map reproduced by Hampshire and Isle of Wight Wildlife Trust (Ordinance Survey, Licence No. 100019532) from the with the permission of Her Majesty's Stationery Office. Crown Copyright 2016.
 Ordnance Survey, Licence No. 100019532 from the with the permission of Her Majesty's Stationery Office. Crown Copyright 2016.
 Hampshire and Isle of Wight Wildlife Trust, Bechoth's House, Vicarage Lane, Cunkfield, Havant, Hampshire, SO23 2CP.
 Produced by Hampshire and Isle of Wight Wildlife Trust on 18 November 2016 by Catherine McGuire. For enquiries relating to the Wildlife Trusts visit our website Catherine McGuire, email Catherine.McGuire@hwt.org.uk, tel: 01489 714655



New Forest Non-Native Plants Project Control 2016

Montbretia



Map reproduced by Hampshire and Isle of Wight Wildlife Trust (Ordinance Survey, Licence No. 100019532) from the with the permission of Her Majesty's Stationery Office. Crown Copyright 2016.
 Ordnance Survey, Licence No. 100019532 from the with the permission of Her Majesty's Stationery Office. Crown Copyright 2016.
 Hampshire and Isle of Wight Wildlife Trust, Bechoth's House, Vicarage Lane, Cunkfield, Havant, Hampshire, SO23 2CP.
 Produced by Hampshire and Isle of Wight Wildlife Trust on 18 November 2016 by Catherine McGuire. For enquiries relating to the Wildlife Trusts visit our website Catherine McGuire, email Catherine.McGuire@hwt.org.uk, tel: 01489 714655



New Forest Non-Native Plants Project Control 2016

Three-cornered Garlic



Map reproduced by Hampshire and Isle of Wight Wildlife Trust (Ordinance Survey Licence No. 100019532) from the with the permission of Her Majesty's Stationery Office. Crown Copyright 2016. Unauthorised reproduction in any form. Copyright and every other right reserved. British Crown and Monarch's IP and 33. All rights reserved. GMP Printers/Habitat, nature species and SINC data supplied by the Hampshire Biodiversity Information Centre in context of the H&I Partnership. Aerial photography courtesy of Ordnance Survey. Produced by Hampshire and Isle of Wight Wildlife Trust on 25 November 2016 by Catherine McGuire. For enquiries relating to the Wildlife Trusts GIS data contact Catherine McGuire, email Catherine.McGuire@hwt.org.uk, tel: 01489 719455

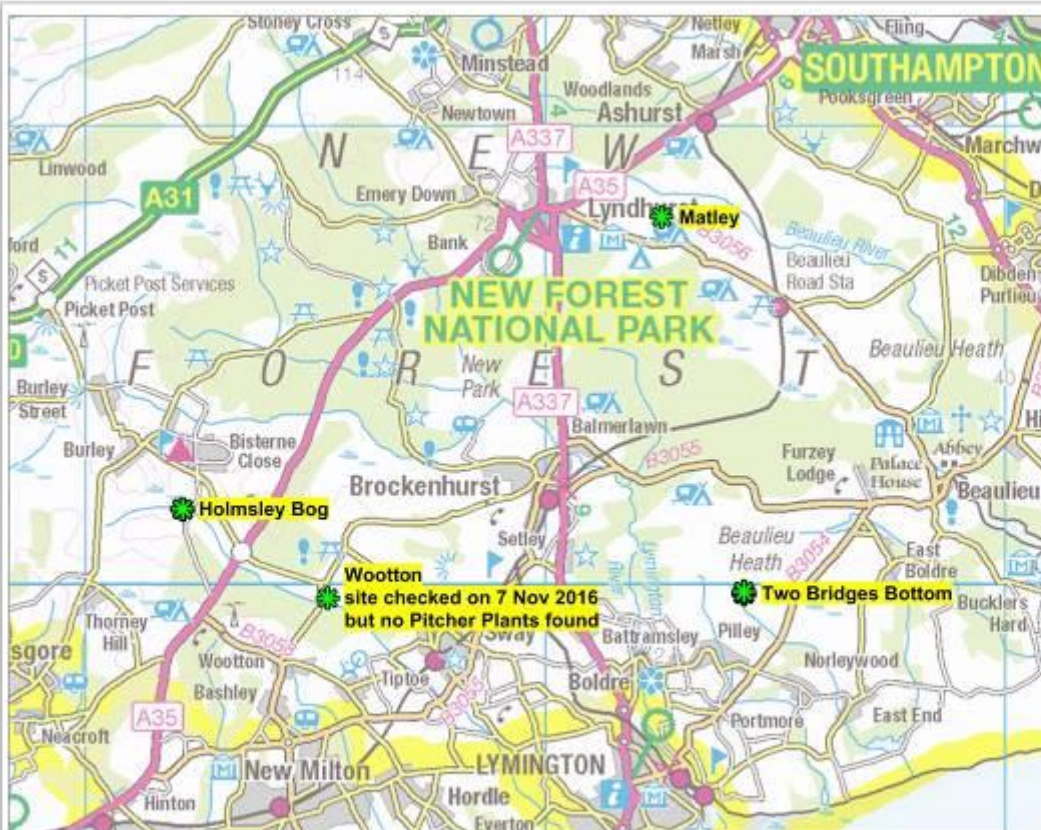


New Forest Non-Native Plants Project Control 2016

Parrot's Feather



Map reproduced by Hampshire and Isle of Wight Wildlife Trust (Ordinance Survey Licence No. 100019532) from the with the permission of Her Majesty's Stationery Office. Crown Copyright 2016. Unauthorised reproduction in any form. Copyright and every other right reserved. British Crown and Monarch's IP and 33. All rights reserved. GMP Printers/Habitat, nature species and SINC data supplied by the Hampshire Biodiversity Information Centre in context of the H&I Partnership. Aerial photography courtesy of Ordnance Survey. Produced by Hampshire and Isle of Wight Wildlife Trust on 25 November 2016 by Catherine McGuire. For enquiries relating to the Wildlife Trusts GIS data contact Catherine McGuire, email Catherine.McGuire@hwt.org.uk, tel: 01489 719455



New Forest Non-Native Plants Project Control 2016

Pitcher Plant
Sarracenia purpurea

Removed by hand
by volunteers



Map reproduced by Hampshire and Isle of Wight Wildlife Trust. Crown Copyright 2016 OS 100019002
 Lighthouses and reproduction of images Copyright are the property of the copyright owner. British Crown and other symbols are the property of the Crown. All rights reserved.
 BAP Priority habitat, notable species and SNC data supplied by the Hampshire and Isle of Wight Wildlife Centres on behalf of the RDC Partnership. Aerial photography courtesy of GWH Mapping plc.
 Produced by Hampshire and Isle of Wight Wildlife Trust on 18 November 2016 by Catherine McGuire. For enquiries relating to the Wildlife Trusts GIS data contact Catherine McGuire, email Catherine.McGuire@hewit.org.uk, tel: 01483 774495. 0012 2016

Hampshire and Isle of Wight Wildlife Trust
 Beaulieu House, Vantage Lane
 Cotswold, Hampshire
 SO32 2DF



New Forest Non-Native Plants Project Control 2016

Pitcher Plant
Sarracenia purpurea

Removed by hand
by volunteers on
7th November 2016

Scale 1:500 (A4)



Pitcher Plant Control Location

Map reproduced by Hampshire and Isle of Wight Wildlife Trust. Crown Copyright 2016 OS 100019002
 Lighthouses and reproduction of images Copyright are the property of the copyright owner. British Crown and other symbols are the property of the Crown. All rights reserved.
 BAP Priority habitat, notable species and SNC data supplied by the Hampshire and Isle of Wight Wildlife Centres on behalf of the RDC Partnership. Aerial photography courtesy of GWH Mapping plc.
 Produced by Hampshire and Isle of Wight Wildlife Trust on 18 November 2016 by Catherine McGuire. For enquiries relating to the Wildlife Trusts GIS data contact Catherine McGuire, email Catherine.McGuire@hewit.org.uk, tel: 01483 774495. 0012 2016

Hampshire and Isle of Wight Wildlife Trust
 Beaulieu House, Vantage Lane
 Cotswold, Hampshire
 SO32 2DF



New Forest Non-Native Plants Project Control 2016

Pitcher Plant
Sarracenia purpurea

6 seedlings removed from Matley area on 15th August 2016

Scale 1:500 (A4)



 Pitcher Plant Control Location

Matley Heath

Map reproduced by Hampshire and Isle of Wight Wildlife Trust. Crown Copyright 2016 OS 100010002. Licence and reproduction through CopyRight and MapHead provided by Mapbox, Boston, MA and Mapbox Ltd. All rights reserved. BAP Priority habitat, notable species and SNC data supplied by the Hampshire Biodiversity Information Centre on behalf of the RDC Partnership. Aerial photography courtesy of GVR Mapping plc. Produced by Hampshire and Isle of Wight Wildlife Trust on 18 November 2016 by Catherine McGuire. For enquiries relating to the Wildlife Trusts' GIS data contact Catherine McGuire, email Catherine.McGuire@ewwt.org.uk, tel: 01483 774495. 0032 2017

Hampshire and Isle of Wight Wildlife Trust, Beedon Hill House, Vantage Lane, Crowthorne, Hampshire, RG8 2JF. 0032 2017



New Forest Non-Native Plants Project Control 2016

Pitcher Plant
Sarracenia purpurea

Removed by hand by volunteers on 13th & 16th August 2016

Scale 1:500 (A4)



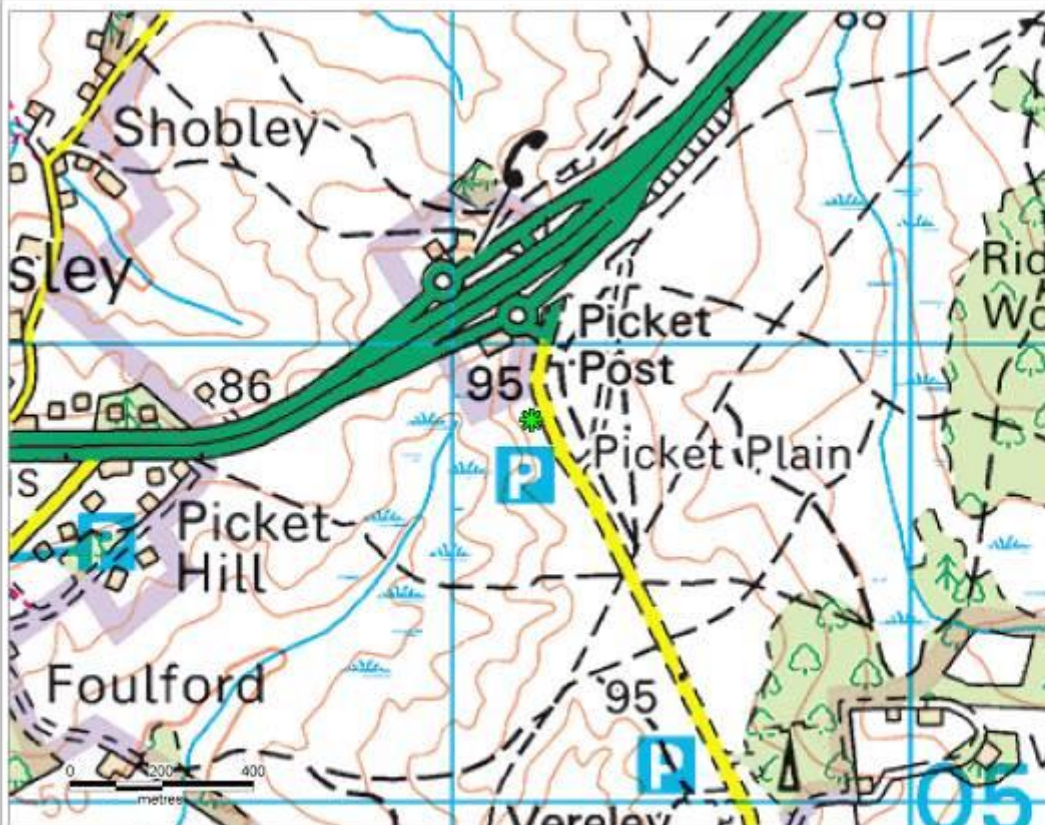
 Pitcher Plant Control Location

Two Bridges Bottom

Map reproduced by Hampshire and Isle of Wight Wildlife Trust. Crown Copyright 2016 OS 100010002. Licence and reproduction through CopyRight and MapHead provided by Mapbox, Boston, MA and Mapbox Ltd. All rights reserved. BAP Priority habitat, notable species and SNC data supplied by the Hampshire Biodiversity Information Centre on behalf of the RDC Partnership. Aerial photography courtesy of GVR Mapping plc. Produced by Hampshire and Isle of Wight Wildlife Trust on 18 November 2016 by Catherine McGuire. For enquiries relating to the Wildlife Trusts' GIS data contact Catherine McGuire, email Catherine.McGuire@ewwt.org.uk, tel: 01483 774495. 0032 2017

Hampshire and Isle of Wight Wildlife Trust, Beedon Hill House, Vantage Lane, Crowthorne, Hampshire, RG8 2JF. 0032 2017





**New Forest Non-Native
Plants Project
Control 2016**

Nerine bowdenii

Ordnance Survey base map (1:10,000)
Scale 1:10,000 (at A4)



Map reproduced by Hampshire and Isle of Wight Wildlife Trust. Crown Copyright 2016. OS 100019832.
 Unauthorised reproduction in any form is prohibited without prior written permission. © Hampshire and Isle of Wight Wildlife Trust. All rights reserved.
 GAP Plants Habitat, native species and SNC 400 supplied by the Hampshire Biodiversity Action Plan Centre in concert of the H&I Partnership. Aerial photographs courtesy of Ordnance Survey.
 Produced by Hampshire and Isle of Wight Wildlife Trust on 8 December 2016 by Ruth Harrold. For enquiries relating to the Wildlife Trusts GIS data contact Catherine McGuire, email Catherine.McGuire@wiwt.org.uk tel: 01489 73455.

