

**NEW FOREST NON-NATIVE PLANTS
PROJECT**

**REPORT TO STEERING GROUP MEETING
ON
14 JANUARY 2016**

**Report covering the period
1 September 2015 – 31 December 2015**

**Catherine Chatters
New Forest Non-Native Plants Officer
4 January 2016**

Publicity

Press releases

No following press releases were issued between 1 September and 31 December 2015.

Publications and websites

- The Lymington & District Naturalists' Society newsletter number 37 (February – July 2015) included an article and photographs to highlight the New Forest Non-Native Plants Project. The article was kindly prepared by Brian Matthews, a keen balsam-pulling volunteer.
- The Herald No 312 (29 Oct – 19 Nov 2015) included an article titled 'Battling the Balsam' on page 19 to acknowledge the help given by people who had volunteered with the NNNPP in summer 2015.
- The front page of the Lymington Times on 31 October 2015 included an article to announce the result of the successful application to the Heritage Lottery Fund for the 'Our Past. Our Future' Landscape Partnership Project; the article stated that the funding will be spent *inter alia* on 'eliminating non-native invasive plants'.
- The winter 2015 edition of HIWWT's 'Wildlife' magazine, published in November 2015, included a news item about the event hosted by HIWWT on 10 September 2015 to celebrate the contribution made by volunteers who help the Wildlife Trust. The news item mentioned the brief presentation given by the Project Officer and the accompanying photograph on page 6 featured Madeline McKenna, a keen volunteer who pulls Himalayan balsam with the NFNNPP.
- The winter 2015 edition of HIWWT's 'Wildlife' magazine featured Dominika Muriénova and Rebecca Wilson (students at Southampton University) who undertook baseline surveys on behalf of the New Forest Non-Native Plants Project in 2015 and who were recipients of HIWWT's Peter Brough Award which was established to acknowledge and support the work of amateur naturalists.
- The Law Commission published the report following its review of wildlife law on 10 November 2015. Appendix A (Index of Consultees who responded to the Law Commission's consultation paper) to the report titled 'Wildlife Law Volume 1: Report' (Law Com No 362) lists (on page 467) Hampshire & Isle of Wight on behalf of the New Forest Non-Native Plants Project.
- The Local Action Group (LAG) e-Bulletin Issue 8, distributed on 22 December 2015, featured Dominika Muriénova and Rebecca Wilson who volunteered for NFNNPP in 2015. It also mentioned the Project Officer's presentation at workshop in Kent on 15 December.
- The NFNNPP featured on page 11 of the Hampshire & Isle of Wight Wildlife Trust Annual Report 2014-15
- On Monday 16 November 2015 HIWWT published a news item (titled 'Local naturalists win award for research') on its website featuring Rebecca Wilson and Dominika Muriénova receiving their Peter Brough Award at the AGM on 14 November 2015.
- The Plantlife press release dated 22 November 2015 titled 'Nipped in the bud' which relates to the EU Invasive Alien Species Regulation refers to the control of American skunk cabbage by NFNNPP, includes a photograph by the Project Officer (of volunteer Alexander Bridges standing amongst American skunk cabbage) and has a link to the research by Neil Sanderson, commissioned by NFNNPP, to assess the impact of American skunk cabbage on native flora. Press release is based on information provided by the Project Officer to Andy Byfield of Plantlife.
- Garden News (19 December 2015) included an article titled 'EU bans more invaders' about the list of 37 Invasive Alien Species of Union Concern which featured a photograph taken by the Project Officer of volunteer Alexander Bridges standing amongst American skunk cabbage.

Liaison with landowners and managers

The following landowners/managers were met between 1 September – 31 December 2015:-

- Andrew Naphine on 7 September 2015
- Sue Sommerin on 5 October 2015
- Eddie Holtham, Fawley Parish Council on 11 November 2015
- Michael and Nicky Hanslip on 2 December 2015
- Laurence Gibbons on 4 December 2015
- Tina Turner on 7 December 2015

On 16 November 2015 the Project Officer sent an Avon Water newsletter to the landowners/managers of 47 separate parcels of land along the Avon Water. A copy of the Avon Water newsletter is appended to this Steering Group report.

On 18 and 19 November 2015 the Project Officer sent a Cadnam River newsletter to the landowners/managers of 60 separate parcels of land along the Cadnam River. A copy of the Cadnam River newsletter is appended to this Steering Group report.

On 18 and 19 November 2015 the Project Officer sent a Lymington River newsletter to the landowners/managers of 64 separate parcels of land along the Lymington River and its tributaries (the Passford Water and the Mill Lawn Brook). A copy of the Lymington River newsletter is appended to this Steering Group report.

Steering Group meeting

The Steering Group meeting was held on 18 September 2015.

Liaison with Wildlife and Countryside Link Invasive Non-Native Species Group

The Project Officer attended a meeting of the Link Invasive Non-Native Species Group at RSPB's offices in London on 1 December 2015 to hear a presentation on matters relating to the EU Alien Invasive Species Regulation and to discuss matters including the current review of Schedule 9 and the draft code of practice relating to Species Control Orders.

Species Control Provisions – draft Code of Practice

On 7 December 2015 DEFRA commenced the consultation process on the draft Code of Practice relating to the Species Control Provisions now contained in the Wildlife and Countryside Act 1981 as a result of changes brought in by the Infrastructure Act 2015. DEFRA's consultation process ends on 28 February 2016. The Project Officer was alerted to the start of the consultation exercise by the Link Invasive Non-Native Species Group. The Project Officer submitted comments on the consultation document to Kay Haw of the Link Invasive Non-Native Species Group on 8 December 2015 in preparation for a teleconference to be held on 15 January 2016.

Liaison with other Projects and Organisations

Liaison with Wildfowl and Wetlands Trust

On 3 September 2015 Hannah Freeman, Government Affairs Officer at the Wildfowl and Wetlands Trust, contacted the Project Officer to enquire about pickerel weed *Pontederia cordata* in the New Forest.

Liaison with Bournemouth University

Gitte Kragh is studying for a PhD at Bournemouth University and is researching the motivation of volunteers. During October 2015 she asked the Project Officer to distribute a questionnaire to people who have volunteered with the NFNNPP and asked the Project Officer to complete a questionnaire aimed at people who lead volunteers. The Project Officer completed the leaders' questionnaire on 16 October 2015 and distributed the volunteers' questionnaire to 33 people who had pulled Himalayan balsam with the NFNNPP during Summer 2015.



“Dear Catherine thanks for forwarding the questionnaire from Gitte. We've been happy to complete this and hope our answers will be useful to her. You'll be pleased (relieved?) to hear that we've given a fairly glowing report about how things are going with "your" project where the questions allowed for any degree of specification of that type!” – e-mail from John and Helen Read on 20 October 2015

Liaison with Animal and Plant Health Agency

On 19 October 2015 Mike Sutton-Croft, Non-native Species Specialist in the National Wildlife Management Centre at the Animal and Plant Health Agency contact the Project Officer seeking information and photographs for a presentation he'd been asked to give by the Environment Agency to highlight the work undertaken by Local Action Groups to eradicate creeping water primrose. The Project Officer sent him the report dated April 2013 that she had prepared for the European-funded RINSE project, offered to provide relevant photographs and put Mike in touch with Jo Gore who had organised the more recent excavation work at Breamore Marsh and who had given a presentation on this topic at the LAG workshop at Preston Montford in January 2015.

Liaison with Plantlife

On 2 November 2015 Andy Byfield of Plantlife sought information about the impact of American skunk cabbage in the New Forest area, in connection with the EU Regulations relating to alien invasive species. The Project Officer responded on 3 November and provided relevant information including the report by Neil Sanderson commissioned by the NFNNPP.

“This is outstanding. It's exactly what we need – Neil's report provides strong scientific evidence for the need for control and Catherine's figures give the economic impact. Please pass on my thanks to Catherine for supplying this and letting us use the information. Yes – we'll credit HIWWT for the information in the case study” – e-mail dated 4 November 2015 from Dr Trevor Dines of Plantlife, forwarded to the Project Officer by Andy Byfield.

Liaison with Yorkshire Wildlife Trust

On 18 November 2015 Brian Lavelle, Living Landscapes Manager at Yorkshire Wildlife Trust, e-mailed the Project Officer seeking advice about grazing sites which have been infested with *Crassula helmsii*. The Project Officer responded via e-mail on 23 November 2015.

Liaison with Scottish Invasive Species Initiative

On 18 December 2015 Meryl Norris, Project Development Officer for the Scottish Invasive Species Initiative, asked for evidence to help with a funding application; the Project Officer sent her the report commissioned by NFNNPP from Neil Sanderson which provides evidence of the impact of American skunk cabbage on native vegetation.

Volunteer activity to control invasive non-native plants between 1 September and 31 December 2015

Control of Himalayan balsam on Monday 5 October 2015

Whilst doing placements with HIWWT, Sam Gaunt and Michael Burningham helped the Project Officer to pull Himalayan balsam along the verge and ditch adjacent to Flexford Lane in the vicinity of the Avon Water on the morning of Monday 5 October.

They then accompanied the Project Officer to undertake a reconnaissance visit at Wainsford Farm, further downstream along the Avon Water, in preparation for a volunteer work party to pull Himalayan balsam there in 2016.



Sam Gaunt and Michael Burningham pulled Himalayan balsam along Flexford Lane

Control of pitcher plants on Monday 2 November 2015

Martin Rand, John Moore and Barry Lockyer spent three hours helping the Project Officer map and remove pitcher plants *Sarracenia purpurea* from Holmsley Bog on 2 November 2015. A total of 140 plants were removed (49 seedlings, 46 small juvenile plants, 28 medium sized juvenile plants and 17 large juvenile plants). The Project Officer prepared an updated report summarising the work undertaken to remove pitcher plants from Holmsley Bog.



Removal of pitcher plants from Holmsley Bog on 2 November 2015.



Location of Pitcher Plants removed from Holmsley Bog on 2 November 2015

After the work party at Holmsley Bog on 2 November Martin Rand checked Acres Down (where pitcher plants had been found a few years ago) and reported that no pitcher plants could be found at that site.

Control of pitcher plants on Monday 9 November 2015

On 9 November 2015 Martin Rand and John Moore helped the Project Officer to check sites near Matley between Ashurst and Lyndhurst where pitcher plants had been removed in August 2014.

Mature, flowering plants had been removed from all four locations during 2014 so it was anticipated that seedlings would be found at all these sites in autumn 2015.

Fortunately no seedlings were found at 3 of the locations; a total of only 4 seedlings were found in the vicinity of the clump of pitcher plants which had been dug up from the fourth location in 2014.

The Project Officer prepared a report of the work undertaken on 9 November 2015 and sent it to the people who had removed the pitcher plants from this area in 2014 and 2015. The report included photographs of the flowering pitcher plants in June 2014 before their removal during August of that year.



“Dear Catherine, thanks for your thorough reports. Excellent photo of flowering plant. I wish that I had seen them at this stage rather than grubbing around for seedlings! Nevertheless I enjoyed taking part in the search. Thanks also for asking me to help”

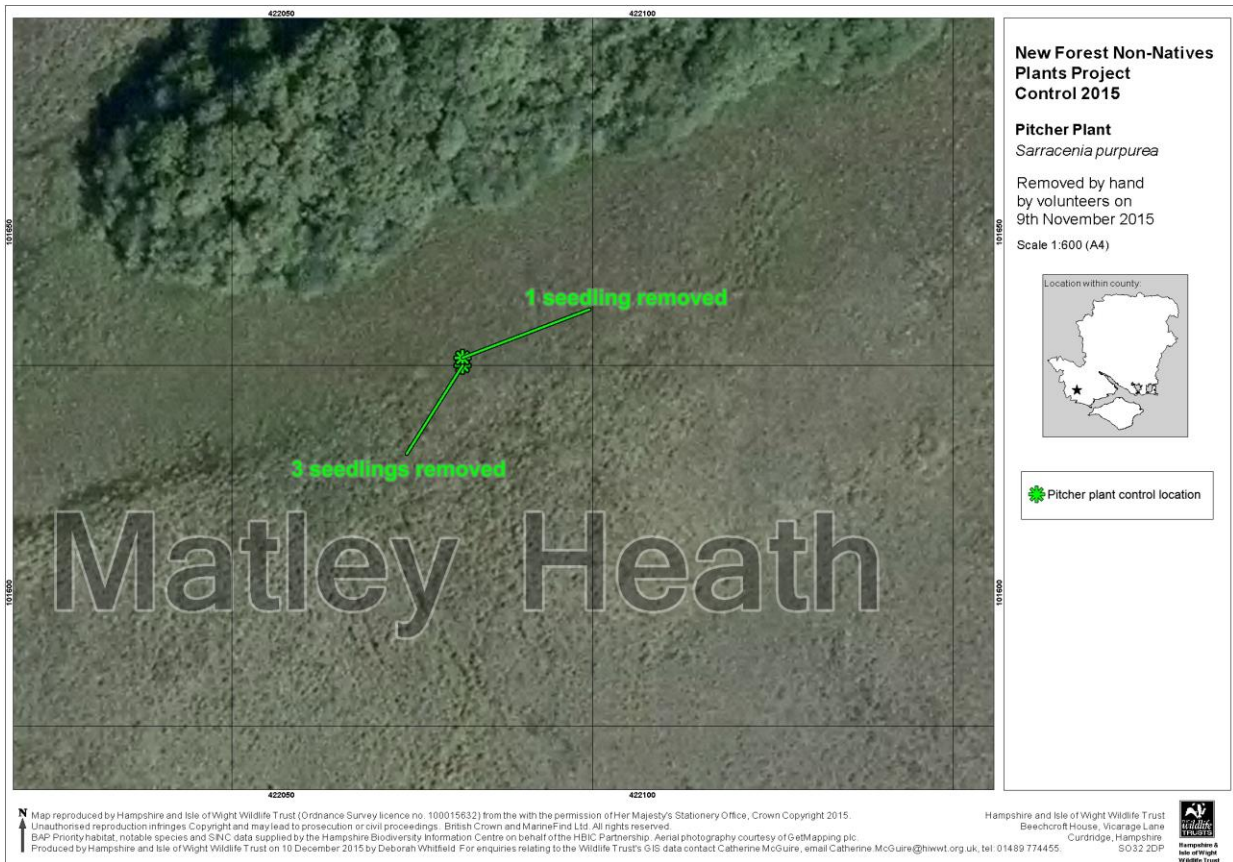
e-mail from John Moore on 10 November 2015



John Moore and Martin Rand checking for pitcher plant seedlings on 9 November 2015.



Pitcher plant seedlings removed from SU 32531 08000 on 9 November 2015



Location of Pitcher Plants removed from Matley area on 9 November 2015

Volunteer surveys, research and other related activities

Excel Southampton Excel Placement Programme

Rebecca Wilson and Dominika Muriénova met the Project Officer with Debbie Whitfield of HIWWT on 11 September 2015 to discuss the draft report which they are preparing following the baseline research they undertook on behalf of NFNNPP in Summer 2015. The baseline surveys will inform future monitoring of the control of invasive non-native plants in connection with the 'Our Past, Our Future' Heritage Lottery Fund landscape partnership project.



Bournemouth University Placement

Owen Stephenson, a Geography student at Bournemouth University, volunteered with the New Forest Non-Native Plants Project to pull Himalayan balsam during Summer 2015. He asked the Project Officer to complete a Host Placement Report and this was completed and submitted on 11 September 2015.

"I really enjoyed my time working with you and the other volunteers and I will hopefully have a chance to do some more Himalayan Balsam pulling next summer if I have some free time. Hope you had a lovely summer" – email from Owen Stephenson dated 10 September 2015

Sparsholt College Placement

On 30 November 2015 Chris Worstencroft, a second year Portsmouth University Ecology and Conservation student based at Sparsholt College contacted HIWWT seeking a placement with NFNNPP during 2016. Chris will help the NFNNPP with Himalayan balsam pulls for a three week period during the summer.



Cotoneaster surveys

On 14 September and 7 October 2015 Cynthia Swann volunteered by helping the Project Officer record the distribution of non-native Cotoneaster plants at Beaulieu Heath on the site of the former airfield. Plants occurring in the vicinity of part of the perimeter track were recorded using a hand-held GPS device.

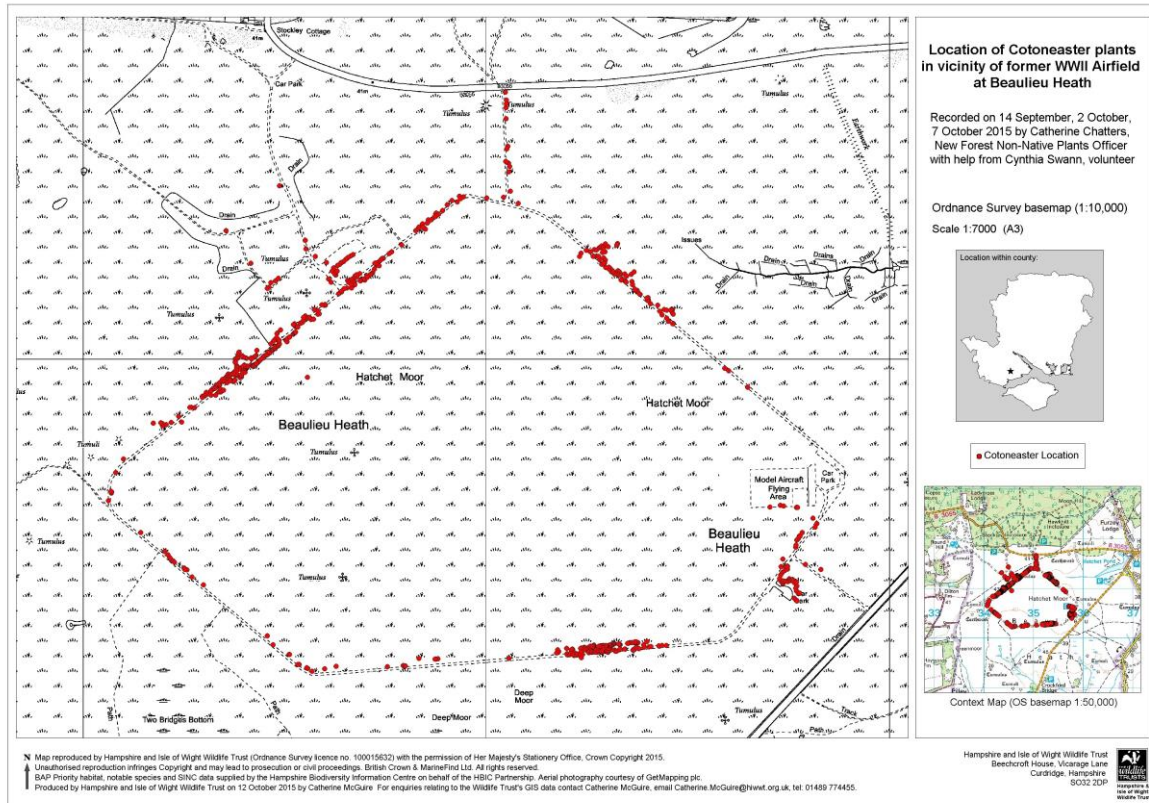


Volunteer Cynthia Swann recording Cotoneaster plants on 14 September 2015



Cotoneaster growing on the perimeter track of the former WW II Airfield at Beaulieu Heath

These surveys, together with GPS readings taken by the Project Officer on 2 October 2015, enabled a map to be prepared to show all locations of Cotoneaster recorded in the vicinity of the former WWII airfield at Beaulieu Heath.



Cynthia Swann surveying Cotoneaster plants in the vicinity of the former WW II airfield at Beaulieu Heath on 14 September 2015

On 14 December 2015 Martin Rand (VC11 Vice-County Recorder), Eric Clement, John Norton and Mike Rowe helped the Project Officer to identify the various Cotoneasters growing in the vicinity of the former airfields at Beaulieu Heath and at East End. The majority of the species growing on Beaulieu Heath were *Cotoneaster horizontalis*; other species recorded here were *C. simonsii* and *C. divaricatus*. The majority of the species growing on Beaulieu Heath were *C. horizontalis*; the other species recorded here was *C. dielsianus*.



Eric Clement, Mike Rowe and Martin Rand identifying Cotoneasters at Beaulieu Heath on 14 December 2015



Social event for volunteers

Twenty-one people (plus Project Officers) attended a social event at Brockenhurst Village Hall on the evening of Thursday 8 October 2015 to celebrate the success of the balsam-pulling season in 2015. They enjoyed a bring-and-share supper and then Catherine Chatters and Jo Gore gave a presentation to review the work undertaken to control balsam along the Cadnam River, the Avon Water, Beaulieu River, Lyminster River, Mill Lawn Brook and Passford Water in summer 2015.



Some of the volunteers at the social event on Thursday 8 October 2015

“Dear Catherine, I just wanted to thank you for arranging a lovely evening last Thursday. It was really good to meet up with my fellow balsam pullers and I thoroughly enjoyed tucking into all the lovely food that people had brought! With all good wishes, Madeline” – e-mail from Madeline McKenna

“Dear Catherine, we both enjoyed Thursday evening and it is pleasing to know that balsam efforts are making progress” – e-mail from Jean and Barry Cottell

“Thank you for organising another enjoyable social evening” – e-mail from John Moore

Securing funding

‘Our Past, Our Future’ Heritage Lottery Fund bid

The successful result of the bid to the Heritage Lottery Fund for the ‘Our Past, Our Future’ Landscape Partnership Project was announced in October 2015.

Our Past, Our Future
Working together for the New Forest



Supported by
The National Lottery[®]
through the Heritage Lottery Fund



Promotional Events and awareness-raising

Presentation to HIWWT Winchester Area Group

The Project Officer gave a presentation about the activities of the NFNNPP to the HIWWT Winchester Local Group during the evening of 9 September 2015.

Presentation to HIWWT volunteers

HIWWT invited volunteers to attend an evening event at Testwood Lakes Centre on Thursday 10 September 2015 to show the Trust's appreciation for everything they do for the Wildlife Trust. The Project Officer was invited to give a presentation to highlight what the Project has achieved with the help of the volunteers. The presentation focussed on the important role that volunteers play in raising awareness about invasive non-native plants; undertaking surveys, research and monitoring; carrying out practical work to control, for example, Himalayan balsam. It was a useful opportunity to let other volunteers know about the NFNNPP.

Lymington to Keyhaven Reserve Open Day on Sunday 13 September 2015

The Project Officer manned a display at the Open Day hosted by HIWWT, Hampshire County Council and the New Forest National Park Authority. As usual, this annual event attracted people who were genuinely interested in the environment and was a good opportunity to raise awareness about invasive non-native plants. Some useful contacts were made, including people who expressed an interest in volunteering to pull balsam next summer.



Bob and Jean Annell visiting the NFNNPP display at the Lymington to Keyhaven Nature Reserve Open Day on Sunday 13 September 2015

Presentation to Eling Trefoil Guild on Thursday 17 September 2015

The Project Officer gave a talk about the NFNNPP to members of the Eling Trefoil Guild on the evening of Thursday 17 September 2015. The talk was well received and useful contacts were made regarding potential help from youth groups to pull Himalayan balsam in Summer 2016.

Display at Lyndhurst on Wednesday 11 November 2015

Angela Peters, the New Forest National Park Authority's Community Wildlife Plans Project Officer, invited the NFNNPP Project Officer to an evening event to celebrate the end of the three year Community Wildlife Plans Project. The Project Officer took the opportunity to bring a display to highlight some of the species being tackled by the NFNNPP.



Tony Locke of Milford Conservation Volunteers at the event to mark the end of the Community Wildlife Plans Project on 11 November 2015

Presentation to Meon Valley Garden Club on Thursday 19 November 2015

The Project Officer gave a presentation on the evening of 19 November 2015 to the Meon Valley Garden Club focussing on the problem caused by invasive non-native plants and how gardeners can 'Be Plant Wise' and help to stop them spreading in the wild.

Conference organised by Medway Valley Countryside Partnership, Kent County Council

On 15 December 2015 the Project Officer gave a presentation on riparian and aquatic plants at a one-day training event in Headcorn, Kent, organised by the Medway Valley Countryside Partnership to raise awareness about invasive, non-native species. The presentation focussed on problems caused by invasive non-native riparian and aquatic plants, methods of control and relevant legislation.

The event was a very useful opportunity to meet up with staff from the GB Non-Native Species Secretariat, the Environment Agency, contractors and other people working on invasive non-native species.



Promotion of the 'Be Plant Wise' campaign and 'Check, Clean, Dry' campaigns



The 'Be Plant Wise' campaign featured in the Project Officer's presentation to the HIWWT Winchester Local Group on 9 September 2015 and 'Be Plant Wise' leaflets were given to all those present.



The Be Plant Wise and Check, Clean, Dry campaigns were promoted at the Lymington to Keyhaven Nature Reserve Open Day on Sunday 13 September 2015

Capital works undertaken between 1 September – 31 December 2015

Invoices were received for the following capital works undertaken on behalf of the NFNNPP between 1 September and 31 December 2015:-

- Giant hogweed control along the Avon Water (second treatment of 2015)
- Control of parrot's feather (19 October 2015)
- Control of Japanese knotweed in Hawkhill Inclosure (8 September 2015)
- Control of Japanese knotweed in Pondhead Inclosure (9 September 2015)
- Control of Japanese knotweed at New Park (9 September 2015)
- Control of Japanese knotweed at Bridge Cottage, Bartley (10 September 2019)
- Control of Japanese knotweed near Vereley Hill car park (8 September 2015)
- Control of Japanese knotweed near junction of Meerut Road and Butts Lawn, Brockenhurst (10 September 2015)
- Control of Japanese knotweed near The Pig Hotel (9 September 2015)
- Control of Japanese knotweed and Himalayan honeysuckle at Emery Down (8 September 2015)
- Control of Japanese knotweed, American skunk cabbage and Montbretia along Fleet Water (9 September 2015)
- Control of *Iris laevigata* along ditch to north of Lyndhurst (7 September 2015)
- Control of *Iris laevigata* in Wotton Coppice Inclosure (7 September 2015)
- Control of *Iris laevigata* in Latchmoor Pond (7 September 2015)
- Control of bamboo and Himalayan knotweed on Pennington Common

Training provided by the Project Officer

No training was provided during this reporting period.

Training attended by the Project Officer

The Project Officer attended the British Red Cross First Aid at Work refresher course in Southampton on 12 and 13 October 2015.

Reducing the Impact of Non-native Species in Europe (RINSE)

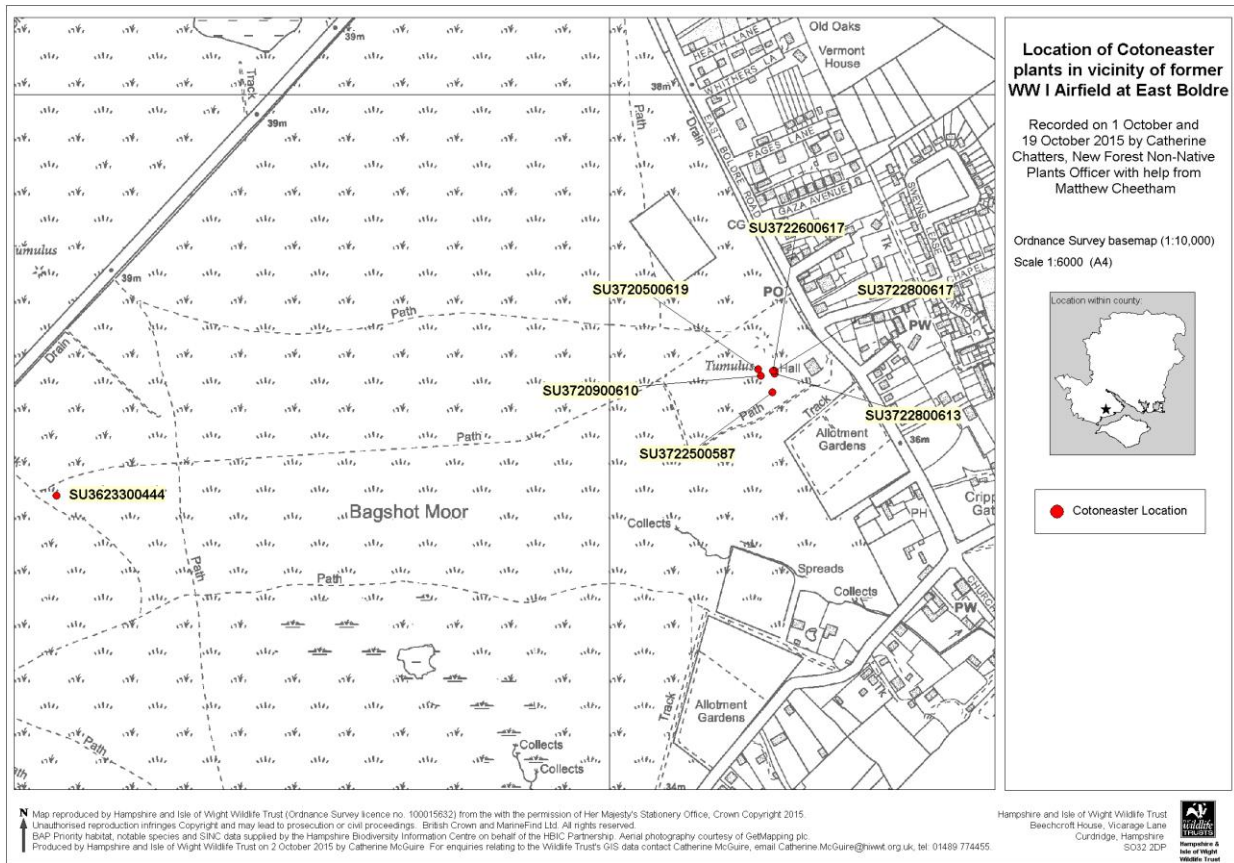
As requested by Norfolk County Council (RINSE lead partner) further information was provided on 4 September 2015 in relation to the final financial claim which had been submitted during January 2015.



Other work

Cotoneaster survey of former airfields at East Boldre, Beaulieu Heath and Stoney Cross

On 1 October 2015 the Project Officer surveyed the former WWI airfield at East Boldre to record the location of Cotoneaster plants. Cotoneaster plants were found growing at three locations here and GPS readings were taken. Further Cotoneaster plants were recorded here at four further locations on 19 October when the Project officer visited the site with a potential contractor. The map below shows the seven locations where Cotoneaster has been found at this site.



On 2 October 2015 the Project Officer continued the survey of the former WWII airfield at Beaulieu Heath which had commenced on 14 September 2015. Plants in the vicinity of the perimeter track were recorded using a hand-held GPS device.



Cotoneaster growing at Beaulieu Heath on 2 October 2015

On 20 October 2015 the Project Officer commenced a survey of Cotoneaster growing on the site of the former WWII airfield at Stoney Cross. GPS readings of Cotoneaster plants were recorded; further surveys will be required here.



Cotoneaster growing in vicinity of former WWII airfield at Stoney Cross on 20 October 2015

Research relating to floating pennywort

In Issue 7 of his e-Bulletin for Local Action Groups, Mike Sutton-Croft (Non-native Species Specialist in the National Wildlife Management Centre at the Animal and Plant Health Agency) included a request from Jane Birch of the Environment Agency who is undertaking research towards a PhD. Jane is studying floating pennywort *Hydrocotyle ranunculoides* and requested samples of plant material to help her ascertain whether this species produces viable seeds in the UK. The Project Officer collected samples from the upper pond at Holbury Manor Ponds on 9 November 2015 and sent them in the post to Jane.



Hydrocotyle ranunculoides collected from Holbury Manor Ponds to assist Jane Birch with her PhD research

Whilst at Holbury, the Project Officer observed floating pennywort growing in the lower pond, only nine paces from the outflow pipe. The Project Officer contacted the representative of Fawley Parish Council who owns this site and agreed to work together on 11 November 2015 to remove the floating pennywort to prevent it 'escaping' through the outflow pipe into the adjacent ditch.



Floating pennywort (Photo: GBNNSS)

Removal of floating pennywort from Holbury Manor Ponds

On 11 November 2015 the Project Officer met Eddie Holtham of Fawley Parish Council to remove floating pennywort *Hydrocotyle ranunculoides* from Holbury Manor Ponds using a small hand-held rake. The majority of the floating pennywort was removed successfully; a small quantity of floating pennywort could not be reached so Eddie will return with a member of the Parish Council who has a pair of waders to remove the remaining vegetation, to avoid the risk of it entering the outflow pipe and invading the adjacent ditch and other watercourses.



Eddie Holtham (Fawley Parish Council) removing floating pennywort from Holbury Manor Ponds on 11 November 2015



Eddie had previously tried to remove floating pennywort with a larger rake but experience proved that a small, narrow rake was much more appropriate

Peter Brough Award

At the HIWWT AGM on 14 November 2015 Dominika Muriénova and Rebecca Wilson received their Peter Brough Award certificates from HIWWT Chairman John Collman, in recognition of the baseline surveys they had undertaken on behalf of the NFNNPP.



Rebecca Wilson (left) and Dominika Muriénova (right) at the AGM on 14 November 2015

Living Record

On 16 November 2015 the Project Officer met Adrian Bicker to explore the possibility of establishing a Living Record system tailored to the New Forest Non-Native Plants Project, to enable records to be submitted efficiently.

Volunteers' newsletter

On 13 November the Project Officer distributed a 6 page newsletter to people who had volunteered with NFNNPP during 2015. A copy of the newsletter is appended to this Steering Group report. The following are a selection of comments from recipients:-

'Great newsletter Catherine, many thanks for forwarding to me, very interesting and lots of forthcoming happenings. Keep up the good work!!' - e-mail from Jan Anderson 14 November 2015

'Smashing, thank you very much' - e-mail from Martin Rand 14 November 2015

'We were interested in reading your latest newsletter especially about the Cotoneaster plants' - e-mail from Val and Phil Wells 14 November 2015

Advice

- on 8 October 2015 the Project Officer provided information regarding control of Japanese knotweed to local resident of Dibden Purlieu;
- on 8 October 2015 the Project Officer gave advice on the telephone to a prospective purchaser regarding control of Japanese knotweed;
- on 14 October 2015 Angela Peters of the New Forest Land Advice Service contacted the Project Officer regarding a report of a knotweed (possibly giant knotweed) in a road verge in Barton-on-Sea. The Project Officer forwarded the information and map to Richard Bastow of HCC Highways Department on 16 October 2015.

Land Advice Recording

On 5 November 2015 the Project Officer added data relating to NFNNPP to HIWWT's Land Advice Recording GIS layer and spreadsheet.

HIWWT Landowner Liaison meeting

The Project Officer attended the HIWWT landowner liaison Cross-Cutting Team Meeting on 23 November 2015.

HIWWT Evidence Cross-Cutting Team meeting

The Project Officer attended the HIWWT Evidence Cross-Cutting Team Meeting on 5 November 2015.

HIWWT staff meeting

The Project Officer attended the HIWWT staff meetings on 30 September 2015 and 16 December 2015.

HIWWT New Forest and Avon Valley Living Landscape Team Meetings

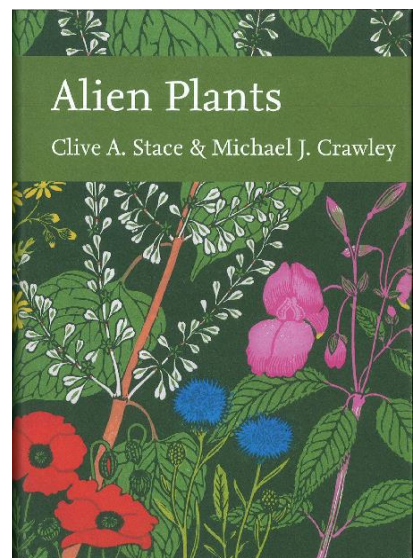
The Project Officer attended the Team Meetings on 16 September, 21 October, 17 November and 11 December 2015

Annual leave....and time off....

The Project Officer took a week of annual leave in Shropshire between 26 and 30 October 2015. During a walk on Wenlock Edge Cotoneaster plants were discovered; these could potentially become very invasive on the limestone here.

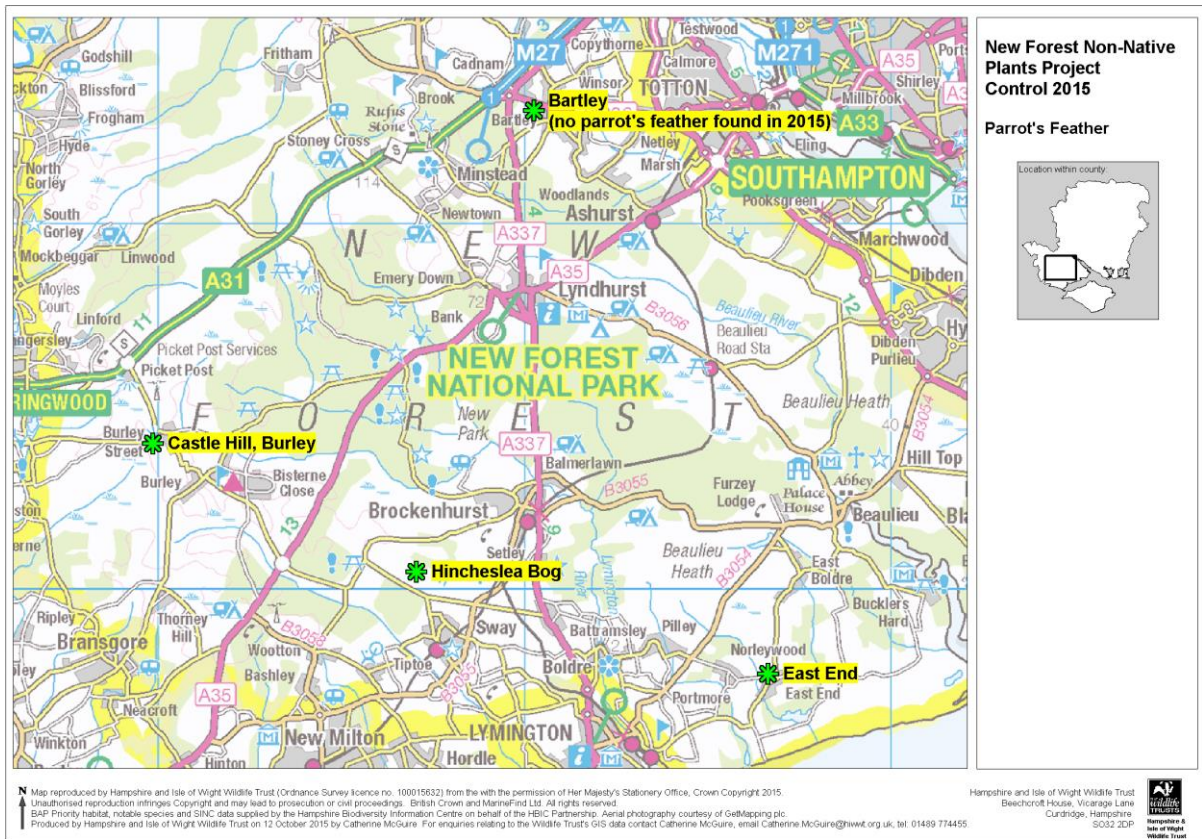
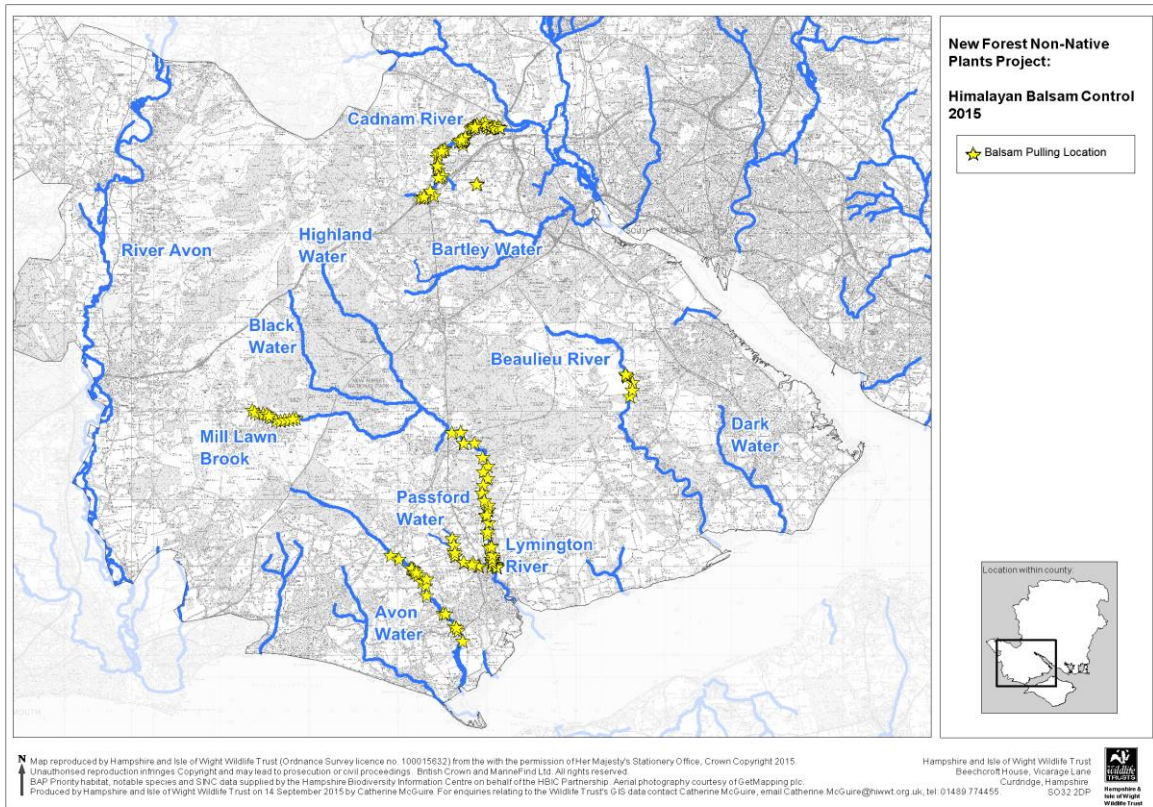


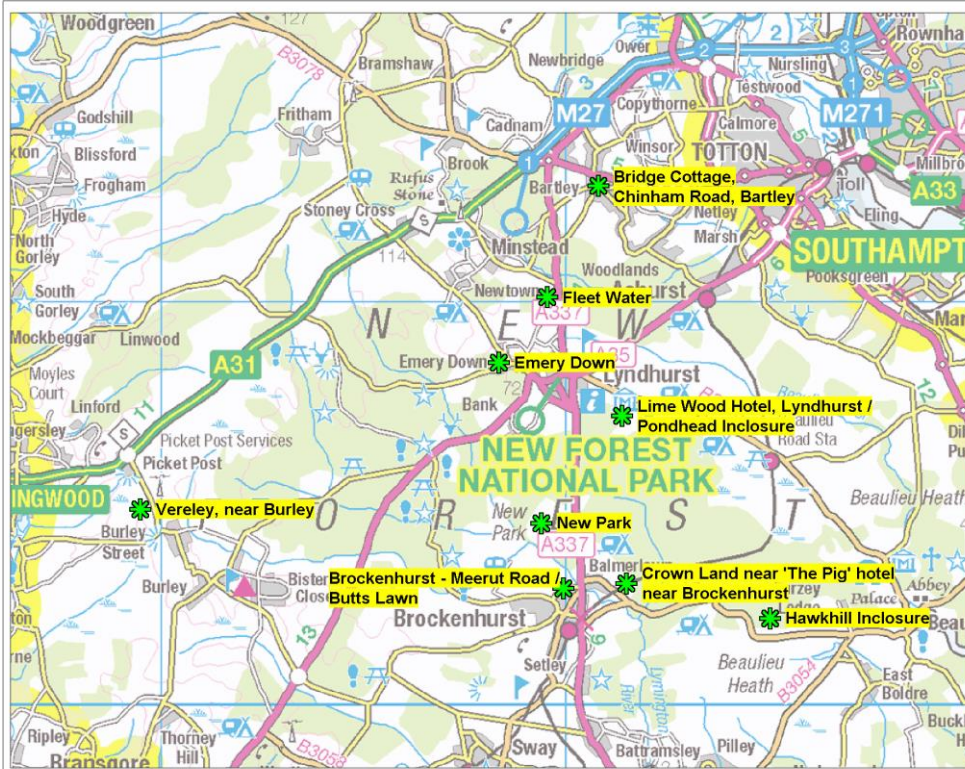
The Project Officer examining Cotoneaster invading the limestone of Wenlock Edge, Shropshire



Cotoneaster has invaded Compton Down on the Isle of Wight, seen here (left) during time off in lieu on 23 December 2015. During the Christmas/New Year holiday the Project Officer read the recently-published New Naturalist book on 'Alien Plants'

Maps showing work undertaken by NFNNPP to control invasive non-native plants during 2015





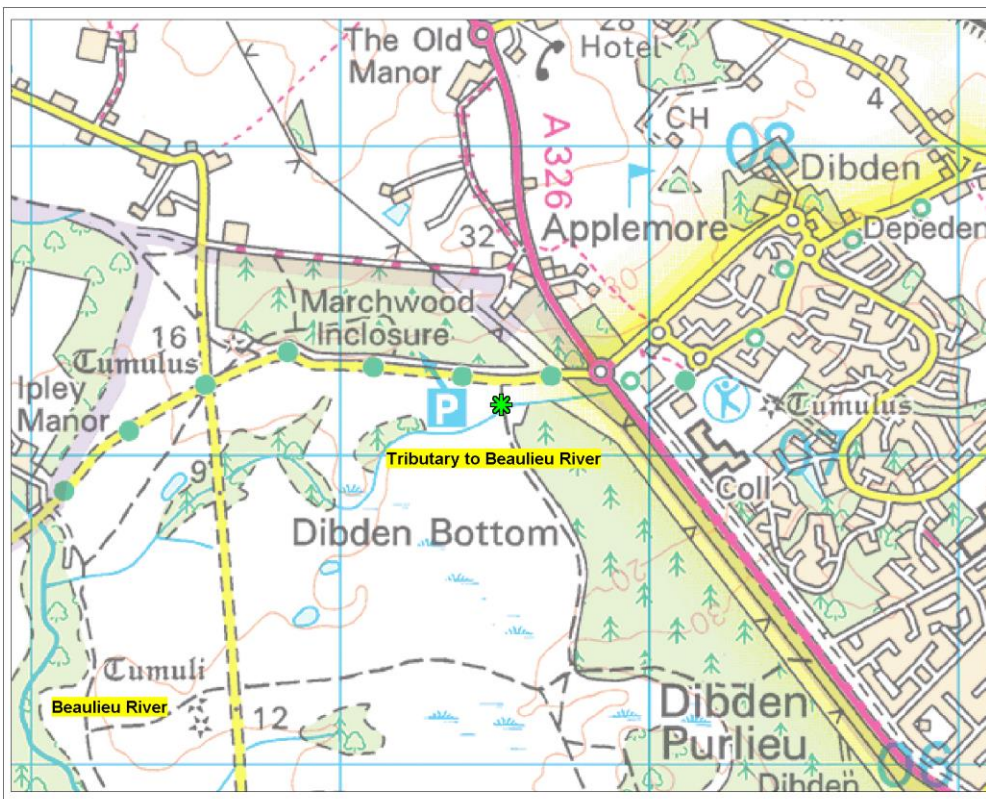
New Forest Non-Native Plants Project Control 2015

Japanese Knotweed



Map reproduced by Hampshire and Isle of Wight Wildlife Trust (Ordnance Survey licence no. 100015632) from the with the permission of Her Majesty's Stationery Office, Crown Copyright 2015. Unauthorised reproduction infringes Copyright and may lead to prosecution or civil proceedings. British Crown and Manx/Isle of Man. All rights reserved. BAP Priority habitat, notable species and SINC data supplied by the Hampshire Biodiversity Information Centre on behalf of the HBC Partnership. Aerial photography courtesy of GetMapping plc. Produced by Hampshire and Isle of Wight Wildlife Trust on 12 October 2015 by Catherine McGuire. For enquiries relating to the Wildlife Trusts' GIS data contact Catherine McGuire, email Catherine.McGuire@hiwt.org.uk, tel: 01489 774455.

Hampshire and Isle of Wight Wildlife Trust
Beechcroft House, Vicarage Lane
Curridge, Hampshire
SO32 2DP



New Forest Non-Native Plants Project Control 2015

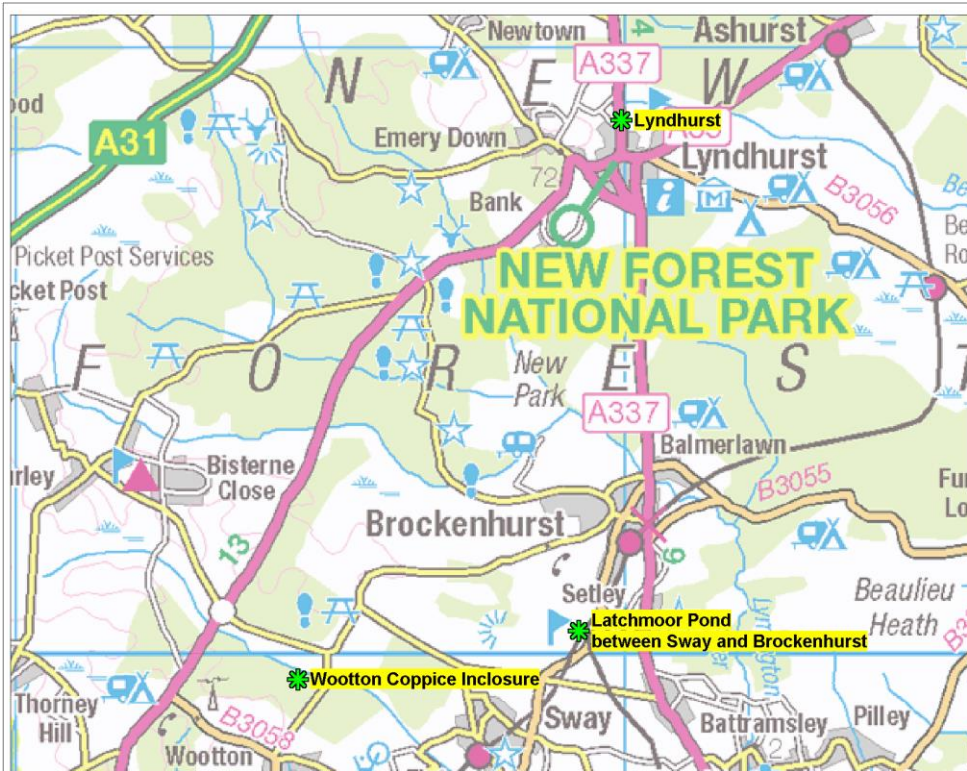
Bog Arum

Calla palustris



Map reproduced by Hampshire and Isle of Wight Wildlife Trust (Ordnance Survey licence no. 100015632) from the with the permission of Her Majesty's Stationery Office, Crown Copyright 2015. Unauthorised reproduction infringes Copyright and may lead to prosecution or civil proceedings. British Crown and Manx/Isle of Man. All rights reserved. BAP Priority habitat, notable species and SINC data supplied by the Hampshire Biodiversity Information Centre on behalf of the HBC Partnership. Aerial photography courtesy of GetMapping plc. Produced by Hampshire and Isle of Wight Wildlife Trust on 12 October 2015 by Catherine McGuire. For enquiries relating to the Wildlife Trusts' GIS data contact Catherine McGuire, email Catherine.McGuire@hiwt.org.uk, tel: 01489 774455.

Hampshire and Isle of Wight Wildlife Trust
Beechcroft House, Vicarage Lane
Curridge, Hampshire
SO32 2DP



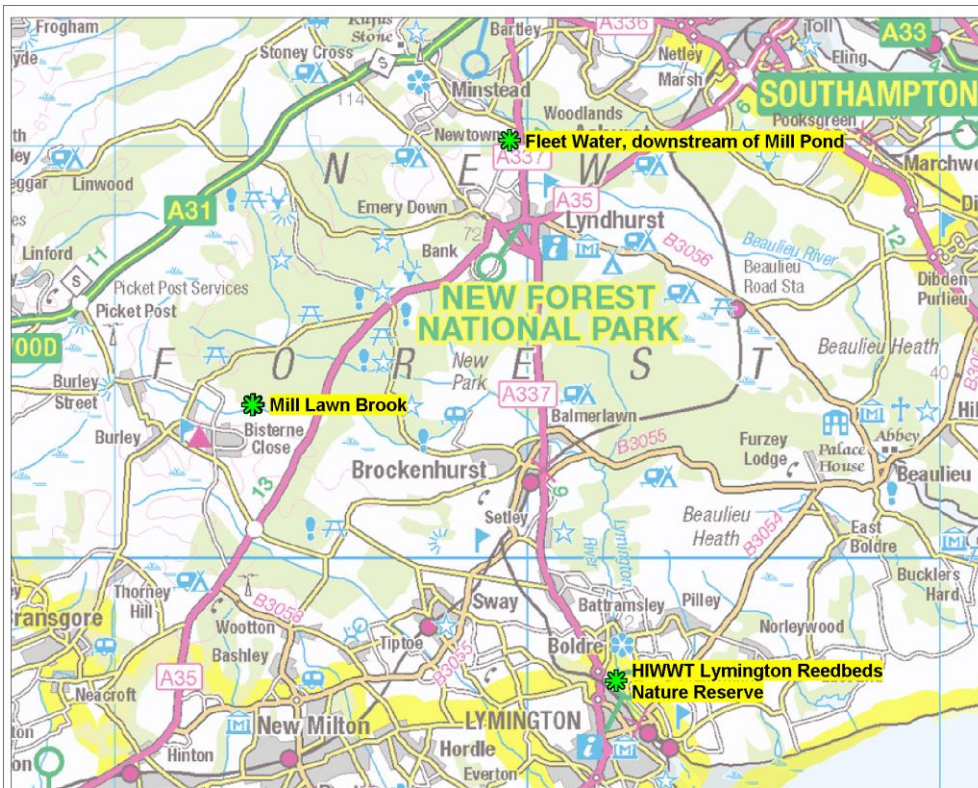
New Forest Non-Native Plants Project Control 2015

Iris laevigata



Map reproduced by Hampshire and Isle of Wight Wildlife Trust (Ordnance Survey licence no. 100015632) from the with the permission of Her Majesty's Stationery Office, Crown Copyright 2015. Unauthorised reproduction infringes Copyright and may lead to prosecution or civil proceedings. British Crown and Marine/Find Ltd. All rights reserved. BAP Priority habitat, notable species and SINCC data supplied by the Hampshire Biodiversity Information Centre on behalf of the HBC Partnership. Aerial photography courtesy of GetMapping plc. Produced by Hampshire and Isle of Wight Wildlife Trust on 12 October 2015 by Catherine McGuire. For enquiries relating to the Wildlife Trusts' GIS data contact Catherine McGuire, email Catherine.McGuire@hwwt.org.uk, tel. 01489 774455.

Hampshire and Isle of Wight Wildlife Trust
Beechcroft House, Vicarage Lane
Curdridge, Hampshire
SO32 2DP
Hampshire & Isle of Wight Wildlife Trust



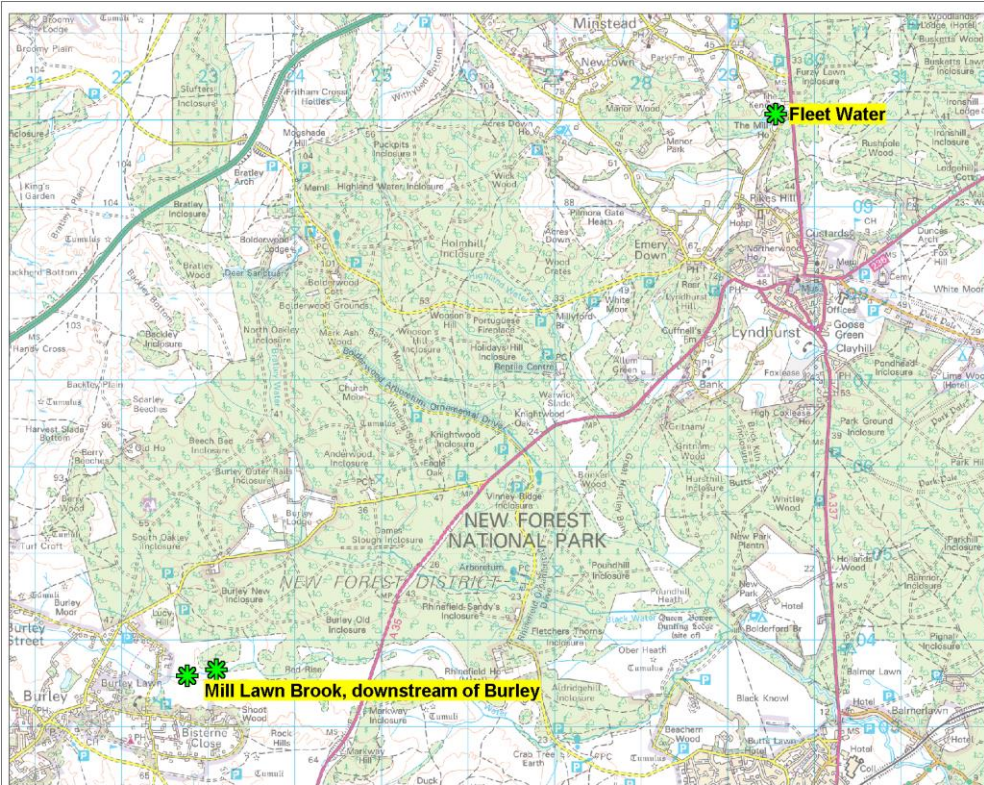
New Forest Non-Native Plants Project Control 2015

American Skunk Cabbage



Map reproduced by Hampshire and Isle of Wight Wildlife Trust (Ordnance Survey licence no. 100015632) from the with the permission of Her Majesty's Stationery Office, Crown Copyright 2015. Unauthorised reproduction infringes Copyright and may lead to prosecution or civil proceedings. British Crown and Marine/Find Ltd. All rights reserved. BAP Priority habitat, notable species and SINCC data supplied by the Hampshire Biodiversity Information Centre on behalf of the HBC Partnership. Aerial photography courtesy of GetMapping plc. Produced by Hampshire and Isle of Wight Wildlife Trust on 13 October 2015 by Catherine McGuire. For enquiries relating to the Wildlife Trusts' GIS data contact Catherine McGuire, email Catherine.McGuire@hwwt.org.uk, tel. 01489 774455.

Hampshire and Isle of Wight Wildlife Trust
Beechcroft House, Vicarage Lane
Curdridge, Hampshire
SO32 2DP
Hampshire & Isle of Wight Wildlife Trust



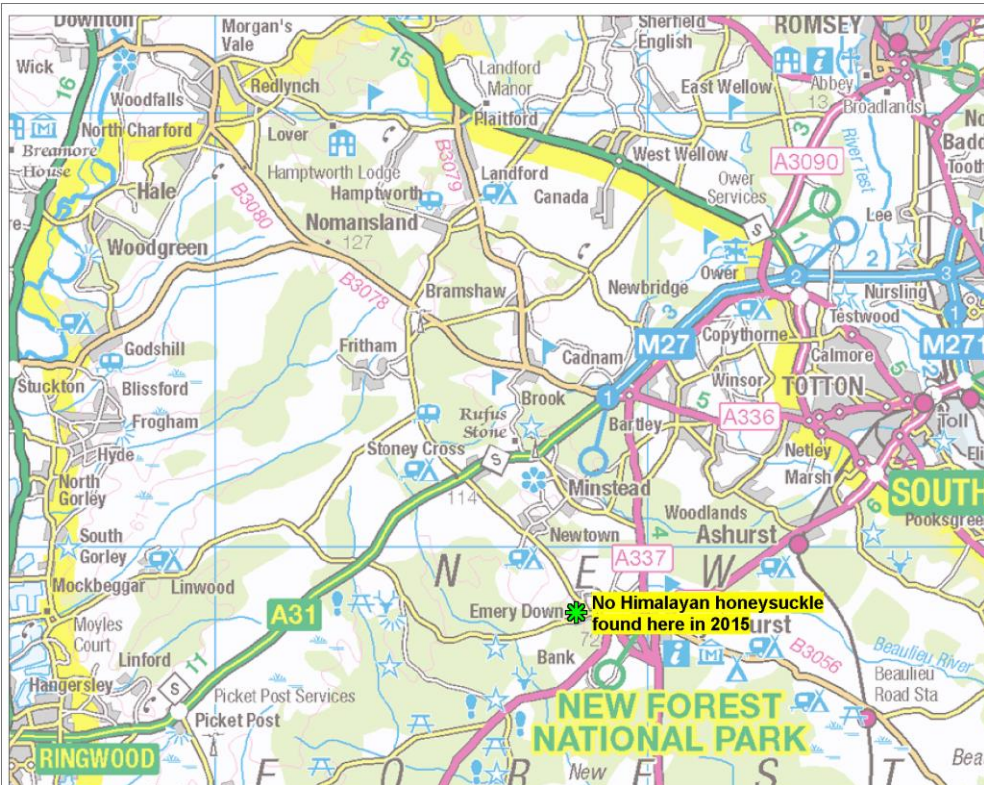
New Forest Non-Native Plants Project Control 2015

Montbretia



Map reproduced by Hampshire and Isle of Wight Wildlife Trust (Ordnance Survey licence no. 100015632) from the with the permission of Her Majesty's Stationery Office, Crown Copyright 2015.
 Unauthorised reproduction infringes Copyright and may lead to prosecution or civil proceedings. British Crown and MarineFind Ltd. All rights reserved.
 GAP Priority habitat, notable species and SINCC data supplied by the Hampshire Biodiversity Information Centre on behalf of the HBIC Partnership. Aerial photography courtesy of GetMapping plc.
 Produced by Hampshire and Isle of Wight Wildlife Trust on 12 October 2015 by Catherine McGuire. For enquiries relating to the Wildlife Trusts' GIS data contact Catherine McGuire, email Catherine.McGuire@hniwt.org.uk, tel: 01489 774455

Hampshire and Isle of Wight Wildlife Trust
 Beechcroft House, Vicarage Lane
 Curdridge, Hampshire
 SO32 2DP
 Hampshire & Isle of Wight Wildlife Trust



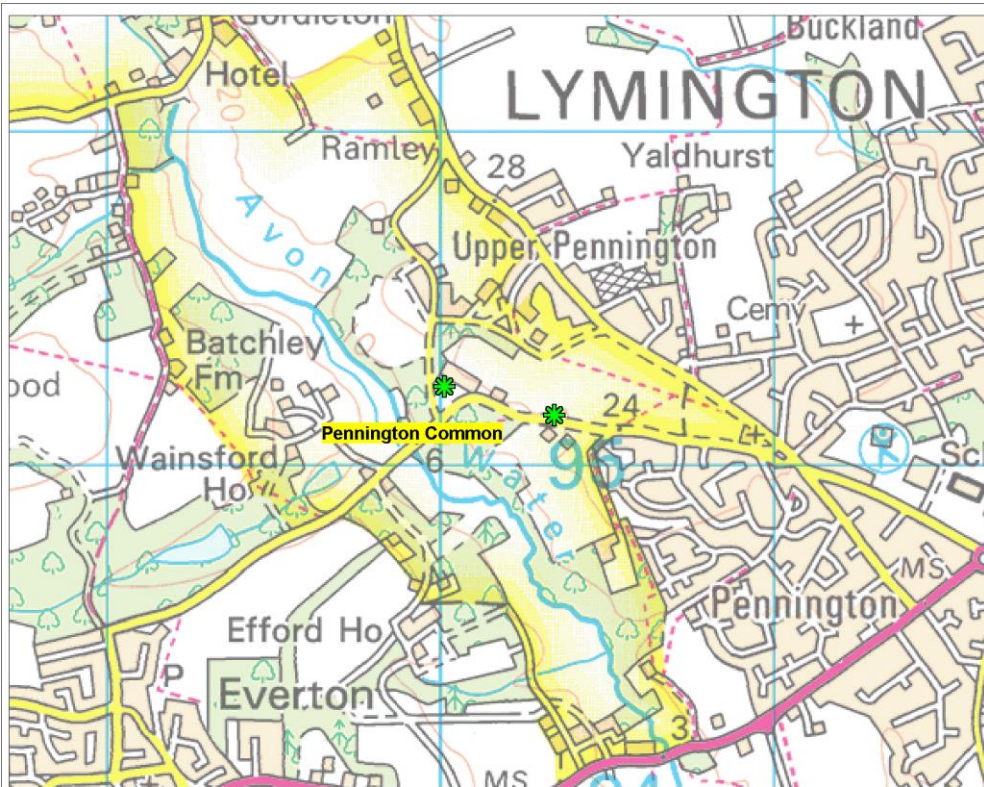
New Forest Non-Native Plants Project Control 2015

Himalayan Honeysuckle



Map reproduced by Hampshire and Isle of Wight Wildlife Trust (Ordnance Survey licence no. 100015632) from the with the permission of Her Majesty's Stationery Office, Crown Copyright 2015.
 Unauthorised reproduction infringes Copyright and may lead to prosecution or civil proceedings. British Crown and MarineFind Ltd. All rights reserved.
 GAP Priority habitat, notable species and SINCC data supplied by the Hampshire Biodiversity Information Centre on behalf of the HBIC Partnership. Aerial photography courtesy of GetMapping plc.
 Produced by Hampshire and Isle of Wight Wildlife Trust on 15 October 2015 by Catherine McGuire. For enquiries relating to the Wildlife Trusts' GIS data contact Catherine McGuire, email Catherine.McGuire@hniwt.org.uk, tel: 01489 774455

Hampshire and Isle of Wight Wildlife Trust
 Beechcroft House, Vicarage Lane
 Curdridge, Hampshire
 SO32 2DP
 Hampshire & Isle of Wight Wildlife Trust



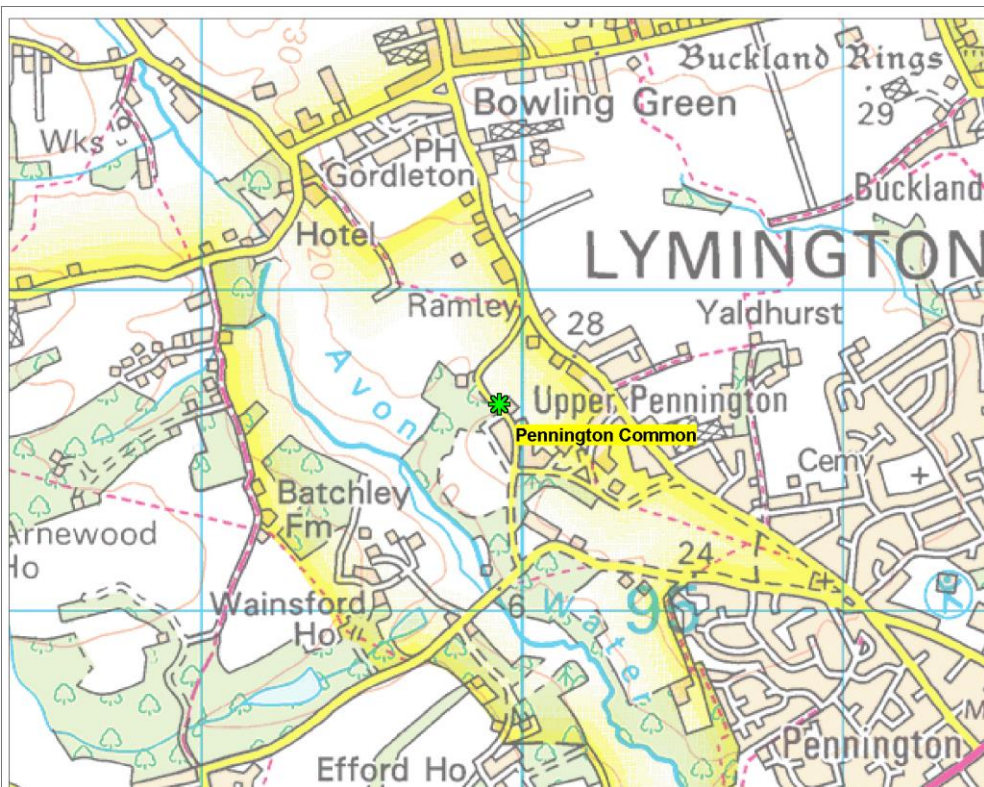
New Forest Non-Native Plants Project Control 2015

Bamboo



Map reproduced by Hampshire and Isle of Wight Wildlife Trust (Ordnance Survey licence no. 100015632) from the with the permission of Her Majesty's Stationery Office, Crown Copyright 2015.
 Unauthorised reproduction infringes Copyright and may lead to prosecution or civil proceedings. British Crown and MarineFind Ltd. All rights reserved.
 BAP Priority habitat, notable species and SINCC data supplied by the Hampshire Biodiversity Information Centre on behalf of the HBC Partnership. Aerial photography courtesy of GetMapping plc.
 Produced by Hampshire and Isle of Wight Wildlife Trust on 12 October 2015 by Catherine McGuire. For enquiries relating to the Wildlife Trusts' GIS data contact Catherine McGuire, email Catherine.McGuire@hwiwt.org.uk, tel: 01489 774455

Hampshire and Isle of Wight Wildlife Trust
 Beechcroft House, Vicarage Lane
 Curridge, Hampshire
 SO32 2DP

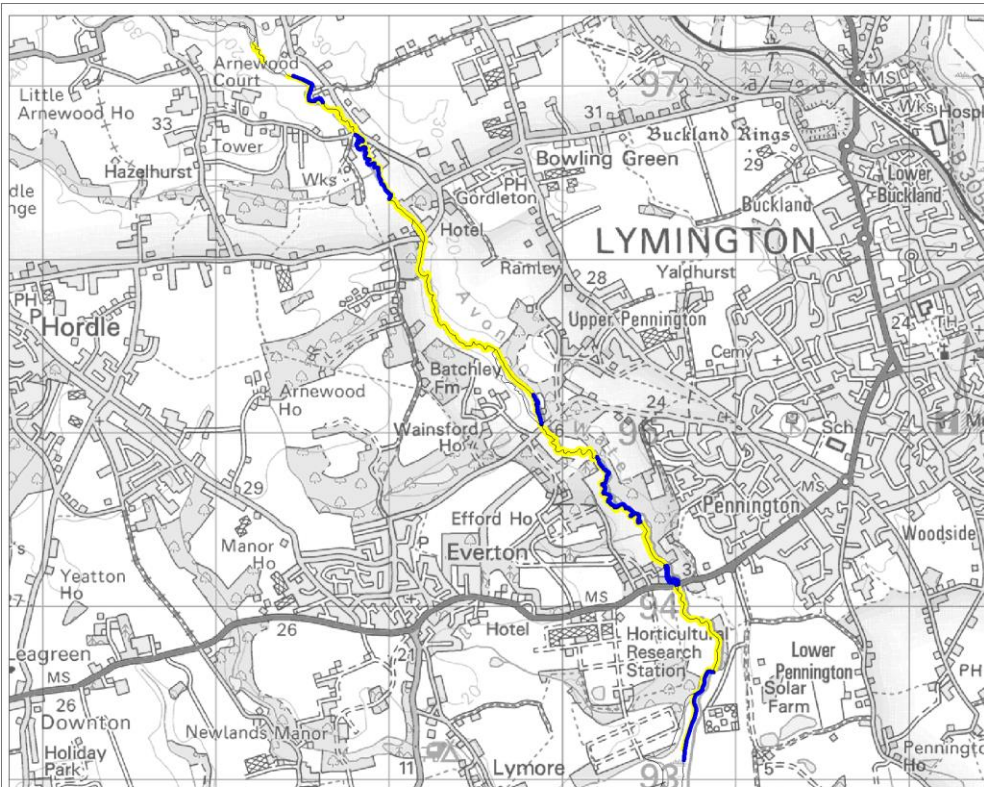
New Forest Non-Native Plants Project Control 2015

Himalayan Knotweed
Persicaria wallichii



Map reproduced by Hampshire and Isle of Wight Wildlife Trust (Ordnance Survey licence no. 100015632) from the with the permission of Her Majesty's Stationery Office, Crown Copyright 2015.
 Unauthorised reproduction infringes Copyright and may lead to prosecution or civil proceedings. British Crown and MarineFind Ltd. All rights reserved.
 BAP Priority habitat, notable species and SINCC data supplied by the Hampshire Biodiversity Information Centre on behalf of the HBC Partnership. Aerial photography courtesy of GetMapping plc.
 Produced by Hampshire and Isle of Wight Wildlife Trust on 12 October 2015 by Catherine McGuire. For enquiries relating to the Wildlife Trusts' GIS data contact Catherine McGuire, email Catherine.McGuire@hwiwt.org.uk, tel: 01489 774455

Hampshire and Isle of Wight Wildlife Trust
 Beechcroft House, Vicarage Lane
 Curridge, Hampshire
 SO32 2DP

New Forest Non-Native Plants Project Control 2015

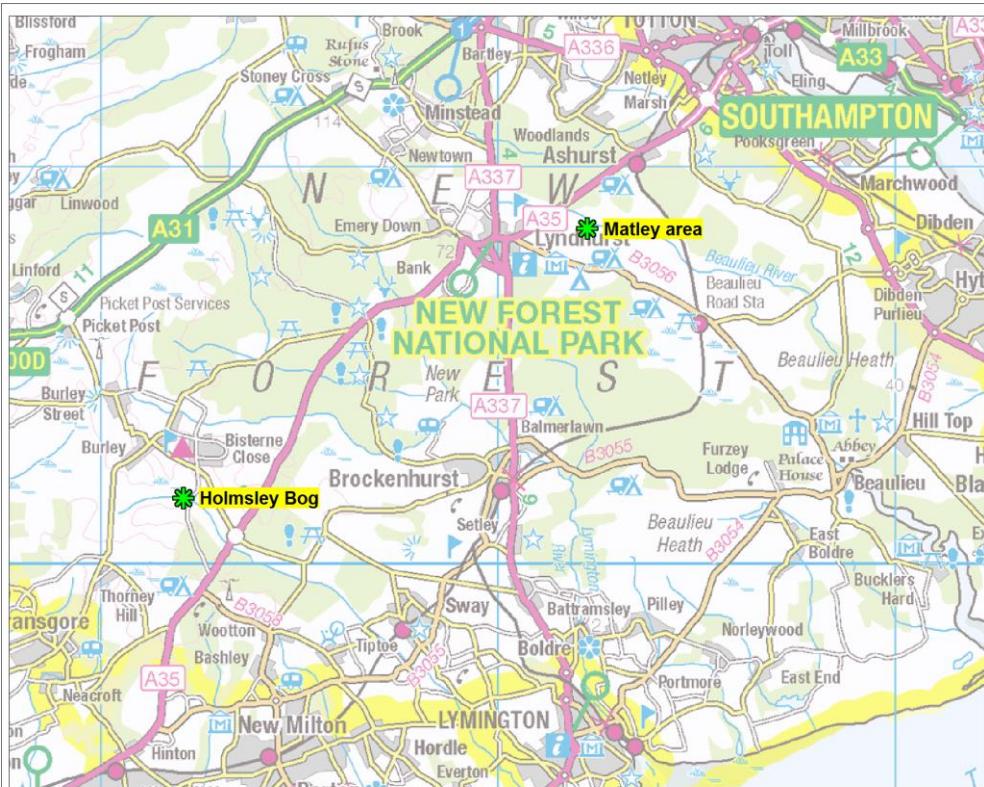
Giant Hogweed



- Herbicide treatment commissioned by NFNNPP
- Work undertaken / organised by landowners or land managers

Map reproduced by Hampshire and Isle of Wight Wildlife Trust (Ordnance Survey licence no. 100015632) from the with the permission of Her Majesty's Stationery Office, Crown Copyright 2015. Unauthorised reproduction infringes Copyright and may lead to prosecution or civil proceedings. British Crown and MarineFind Ltd. All rights reserved. GAP Priority habitat, notable species and SINCC data supplied by the Hampshire Biodiversity Information Centre on behalf of the HBIC Partnership. Aerial photography courtesy of GeoMapping plc. Produced by Hampshire and Isle of Wight Wildlife Trust on 27 February 2015 by Catherine McGuire. For enquiries relating to the Wildlife Trusts GIS data contact Catherine McGuire, email Catherine.McGuire@hwwt.org.uk, tel: 01489 774455

Hampshire and Isle of Wight Wildlife Trust
Beechcroft House, Vicarage Lane
Curdridge, Hampshire
SO32 2DP
Hampshire & Isle of Wight Wildlife Trust



New Forest Non-Natives Plants Project Control 2015

Pitcher Plant
Sarracenia purpurea

Removed by hand by volunteers



Map reproduced by Hampshire and Isle of Wight Wildlife Trust (Ordnance Survey licence no. 100015632) from the with the permission of Her Majesty's Stationery Office, Crown Copyright 2015. Unauthorised reproduction infringes Copyright and may lead to prosecution or civil proceedings. British Crown and MarineFind Ltd. All rights reserved. GAP Priority habitat, notable species and SINCC data supplied by the Hampshire Biodiversity Information Centre on behalf of the HBIC Partnership. Aerial photography courtesy of GeoMapping plc. Produced by Hampshire and Isle of Wight Wildlife Trust on 10 December 2015 by Deborah Whitefield. For enquiries relating to the Wildlife Trusts GIS data contact Catherine McGuire, email Catherine.McGuire@hwwt.org.uk, tel: 01489 774455

Hampshire and Isle of Wight Wildlife Trust
Beechcroft House, Vicarage Lane
Curdridge, Hampshire
SO32 2DP
Hampshire & Isle of Wight Wildlife Trust

Media coverage – see attached sheets

Project newsletters – see attached

- Volunteers' newsletter (November 2015)
- Avon Water newsletter (November 2015)
- Cadnam River newsletter (November 2015)
- Lymington River newsletter (November 2015)

Report compiled by Catherine Chatters
New Forest Non-Native Plants Officer
Hampshire and Isle of Wight Wildlife Trust
Catherine.Chatters@hiwwt.org.uk
Telephone 023 8042 4205
Mobile 07770 923315

4 January 2016

The New Forest Non-Native Plants Project is hosted by
Hampshire & Isle of Wight Wildlife Trust.

The Project is grateful for support provided by a partnership of organisations:-

